

CERTIFICATE OF LOCATION OF GOVERNMENT CORNER

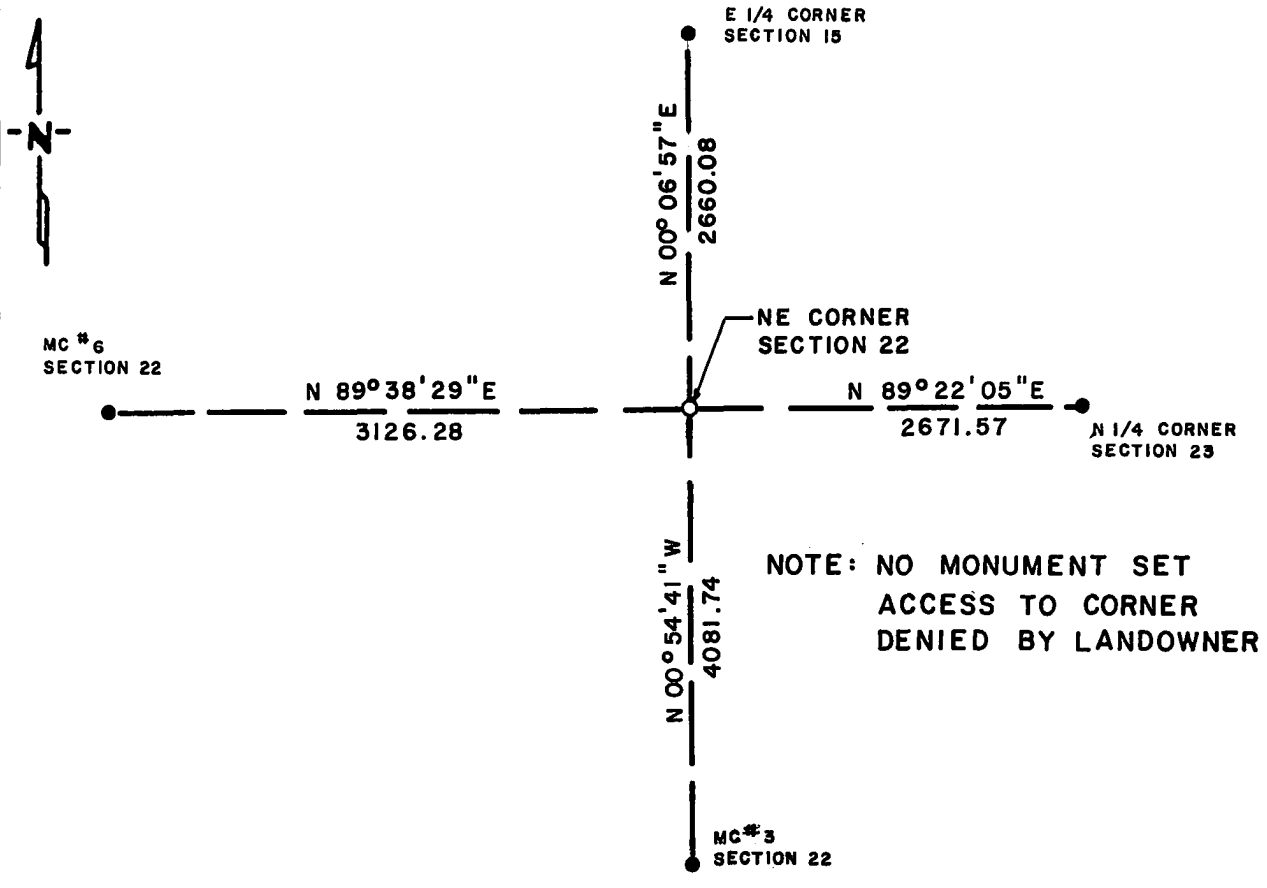
NORTHEAST Corner of Section 22, Township 114 N., Range 41 W., 5th P.M.

STATE OF MINNESOTA, County of YELLOW MEDICINE

At the corner location shown on the sketch:

- On _____ found a _____
DATE
- left monument as found, lowered monument, removed monument (explain)
- On _____ placed a _____
DATE

SKETCH OF REFERENCE TIES



BEARINGS ARE ASSUMED ORIENTATION

Statement of evidence relative to this corner location is on back of page.

LRP 8-19-87
A-1105

RECORDED
GRANTOR
GRANTEE
INDEXED

I hereby certify that this document and the data contained herein was prepared by me or under my direct supervision.

Lowell R. Pomeroy 8-20-87
SIGNATURE DATE

Registration No. 17005

Land Surveyor, Professional Engineer

County Surveyor, County Engineer

OFFICE OF THE COUNTY RECORDER
County of Yellow Medicine

I hereby certify that this document was filed in the Co. Recorders office at 10:10 A.M. on the 24 day of August A.D., 19 87

County Recorder Norman J. Opdahl
By Kay Verdahl, Deputy

DOCUMENT NO. 191469

Northeast Corner Section 22, Township 114 North, Range 41 West

The DNR Bureau of Engineering contacted the following offices for corner information:

Secretary of State
Yellow Medicine County Recorder
Yellow Medicine County Highway Engineer

- 1867 U.S. General Land Office notes in the Secretary of State's Office describes this corner as a set post with charred stake, mound and pits.
- 1891 Surveyor's Record Book, on page 104, from the County Recorder's Office, contains a survey by Jonah Peterman, County Surveyor. Survey states the word "Bogus" at this corner.
- 1901 Surveyor's Record Book B, on page 163, from the County Recorder's Office, contains a collection of what was found at government section corners by John Norgaard, County Surveyor, in a township re-monumentation survey. Norgaard states this corner was "located at equal proportional distances from the northeast corner Section 10, the meander corner on the north side of lake between Sections 22 and 23 and 5300 feet west of the northeast corner Section 23". A 6" by 6" by 24" jasper granite stone was set at this location, top of monument level with ground. Page 33 of Surveyor's Record Book B is a township plat showing distances between government corners obtained from Norgaard's re-monumentation survey. This corner is also shown:
1712 ft. from meander corner between Sections 22 and 23
5306 ft. from the northeast corner Section 15
- 1987 April, the DNR Bureau of Engineering conducted a search for this corner and found it to be in a cultivated field. No metal attraction was obtained, no occupation lines. Computed a lost position for this corner using the following corners resulting in the corresponding distances:
5296.83 ft. from the northeast corner Section 21
5343.14 ft. from the northeast corner Section 23
5320.83 ft. from the northeast corner Section 27
5320.17 ft. from the northeast corner Section 15
This lost position was then checked against GLO distances to feature calls with the following results:
1725.01 ft. to the water's edge of a lake
to the south, GLO to MC south 1702.8 ft.
135.81 ft. to the top of lake bank to the west
GLO to MC west 135.30 ft.

Analysis of the available information led the DNR Bureau of Engineering to conclude that the lost position should be used for the location of the corner, based on procedure and its position relative to GLO feature calls. Norgaard's method of establishing this corner is somewhat questionable. No evidence of his stone was found.