

# CERTIFICATE OF LOCATION OF GOVERNMENT CORNER

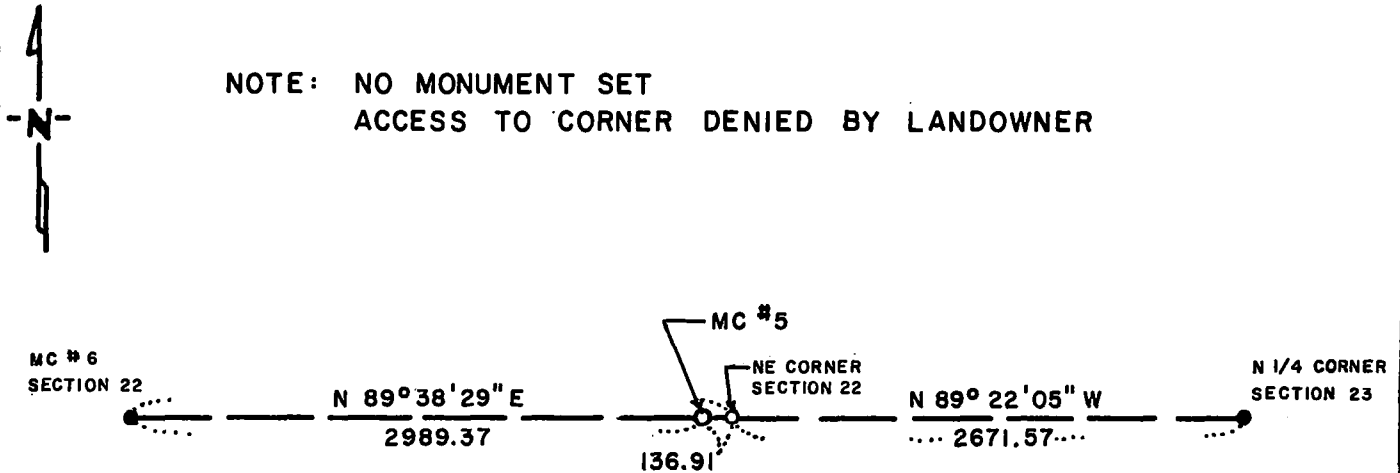
# 5 MEANDER Corner of Section 22, Township 114 N, Range 41 W, 5<sup>th</sup> P.M.

STATE OF MINNESOTA, County of YELLOW MEDICINE

At the corner location shown on the sketch:

- On \_\_\_\_\_ found a \_\_\_\_\_  
DATE
- left monument as found,  lowered monument,  removed monument (explain)
- On \_\_\_\_\_ placed a \_\_\_\_\_  
DATE

## SKETCH OF REFERENCE TIES



NOTE: NO MONUMENT SET  
ACCESS TO CORNER DENIED BY LANDOWNER

- NO MONUMENT SET
- MONUMENT INPLACE

BEARINGS ARE ASSUMED ORIENTATION

Statement of evidence relative to this corner location is on back of page.

LRP 8-19-87  
A-1105

RECORDED  
GRANTOR ✓  
GRANTEE ✓  
INDEXED ✓

I hereby certify that this document and the data contained herein was prepared by me or under my direct supervision.

Lowell R. Pomeroy 8-20-87  
SIGNATURE DATE

Registration No. 17005

- Land Surveyor,  Professional Engineer
- County Surveyor,  County Engineer

OFFICE OF THE COUNTY RECORDER  
County of Yellow Medicine

I hereby certify that this document was filed in the Co. Recorders office at 10:25 A.M. on the 24 day of August A.D., 19 87

County Recorder Norman J. Opdahl

By Kay Verdahl, Deputy

DOCUMENT NO. 191472

Meander Corner #5 of Section 22, Township 114 North, Range 41 West

The DNR Bureau of Engineering contacted the following offices for corner information:

Secretary of State  
Yellow Medicine County Recorder  
Yellow Medicine County Highway Engineer

1867 U.S. General Land Office notes in the Secretary of State's Office describes this corner as a set post. Government notes state the north line of Section 22 was run on a true line as adjoining section corner posts could be seen from one point.

1987 April, the DNR Bureau of Engineering conducted a search for the corner but found nothing. Located the top of the lake bank and intersected it with the north line of Section 22. This gave a distance of 135.81 ft. from the northeast corner of Section 22, GLO had 135.30 ft. from this corner to the northeast corner of Section 22.

The DNR Bureau of Engineering considers this corner to be lost and re-established it using lost methods. Lost position measures 136.91 ft. from the northeast corner of Section 22.