

# CERTIFICATE OF LOCATION OF GOVERNMENT CORNER

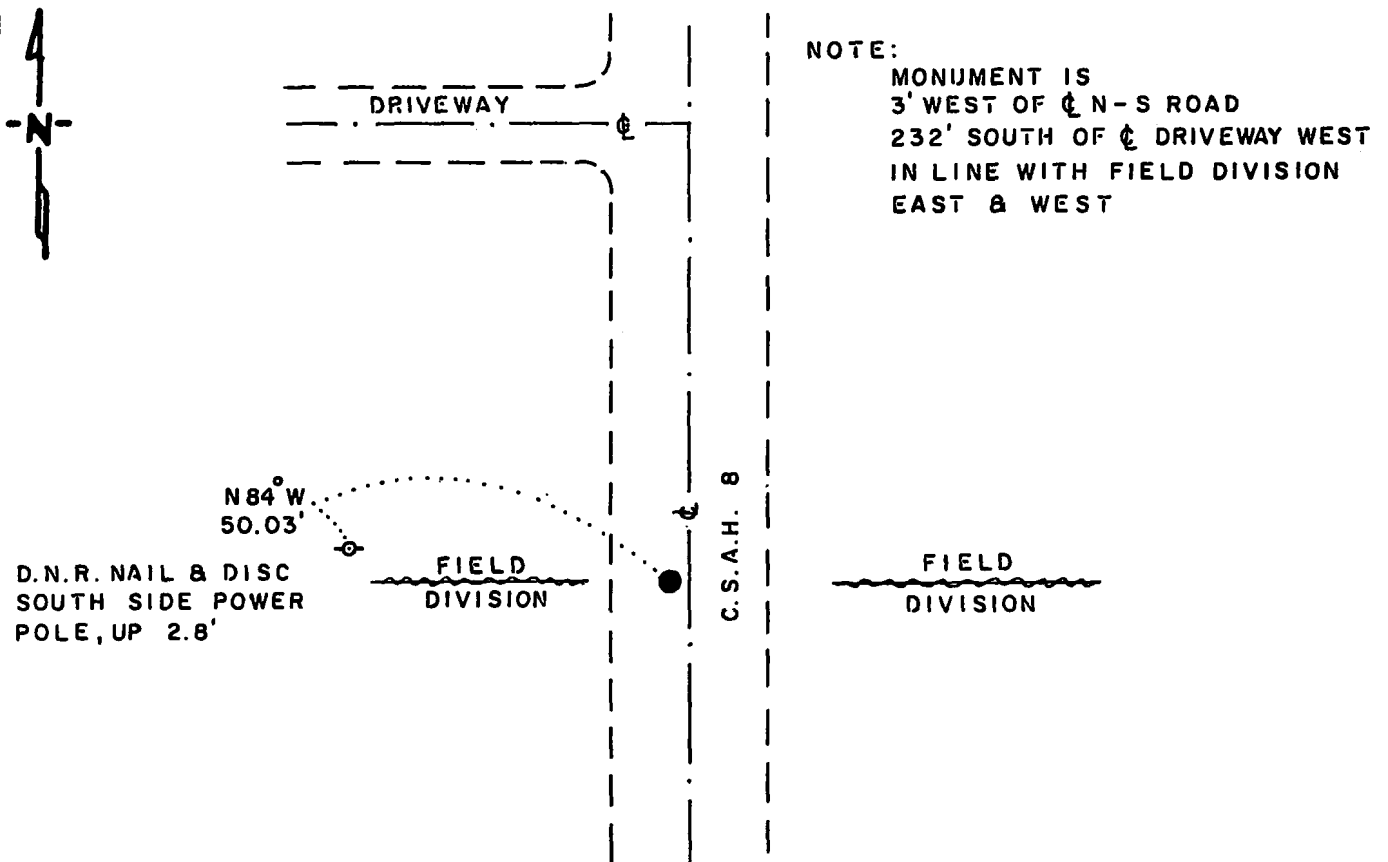
NORTHEAST Corner of Section 23, Township 114 N., Range 41 W., 5th. P.M.

STATE OF MINNESOTA, County of YELLOW MEDICINE

At the corner location shown on the sketch:

- On 7-21-87 found a 1/2" x 18" SQUARE IRON ROD, DOWN 0.5, OVER A  
1/2" x 18" IRON ROD, DOWN 2'  
 left monument as found,  lowered monument,  removed monument (explain)
- On 7-21-87 placed a 1 1/4" x 1 1/4" x 20" PERFORATED STEEL TUBE WITH  
ALUMINIUM CAP STAMPED "D.N.R. SURVEY MARKER", FLUSH, OVER IRON ROD

### SKETCH OF REFERENCE TIES



### BEARINGS OBSERVED WITH COMPASS

Statement of evidence relative to this corner location is on back of page.

J.R.M. 8-4-87  
A-1105

RECORDED  
GRANTOR ✓  
GRANTEE ✓  
INDEXED

I hereby certify that this document and the data contained herein was prepared by me or under my direct supervision.

Lowell B. Pomeroy 8-20-87  
Surveyor DATE

Registration No. 17005  
 Land Surveyor,  Professional Engineer  
 County Surveyor,  County Engineer

OFFICE OF THE COUNTY RECORDER  
County of Yellow Medicine

I hereby certify that this document was filed in the Co. Recorders office at 10:35 A.M. on the 24 day of August A.D., 19 87

County Recorder Norman J. Opdahl

By Kay Nordahl, Deputy

DOCUMENT NO. 191474

Northeast Corner Section 23, Township 114 North, Range 41 West

The DNR Bureau of Engineering contacted the following offices for corner information:

Secretary of State  
Yellow Medicine County Recorder  
Yellow Medicine County Highway Engineer

- 1867 U.S. General Land Office notes in the Secretary of State's Office describes this corner as a set post with charred stake, mound and pits.
- 1901 Surveyor's Record Book B, on page 163, from the County Recorder's Office, contains a collection of what was found at government section corners by John Norgaard, County Surveyor, in a township re-monumentation survey. Norgaard states this corner was a found stake in the government mound. A 6" by 6" by 24" jasper granite stone was set at this location, its top level with the ground. Page 33 of Surveyor's Record Book B is a township plat showing distances between government corners obtained from Norgaard's re-monumentation survey. This corner is shown 5300 ft. from the northeast corner of Section 22.
- 1958 July 7, Page 3 of a book of field notes, from the County Highway Engineer's Office shows three bricks with oak hub on top were located. Placed an iron pin and took three ties. Corner was retied in October.
- 1987 April, the DNR Bureau of Engineering found a ½" by 18" square iron rod down 0.5 ft. Monument is 3 ft. west of centerline of a north-south road and on a vague east-west field division. July 21, the DNR Bureau of Engineering hired a backhoe operated by Peterson Excavating of Clarkfield to dig for evidence of this corner. Dug a 10 ft. north-south by 10 ft. east-west hole, the center being at the intersection of the centerline of the north-south road and east-west field division. Found a ½" by 18" iron rod down 24" under above mentioned square iron rod. Also found a brick and pieces of old wood on south side of lower iron. Continued excavation down to 54" but found nothing else. Replaced square iron rod as found and set a DNR Survey Marker over it. Searched for, but did not find any record ties. Square iron rod was found to be:  
5343.14 ft. from the northeast corner of Section 22  
2643.91 ft. from the east quarter corner of Section 23

Analysis of the available information led the DNR Bureau of Engineering to conclude that the found square iron rod marks the location of the corner. Due to the ties recorded by the County Highway Engineer, it is believed the corner was located, removed by road construction and then reset.