

# CERTIFICATE OF LOCATION OF GOVERNMENT CORNER

NORTH QUARTER Corner of Section 23, Township 114 N., Range 41 W., 5th. P.M.

STATE OF MINNESOTA, County of YELLOW MEDICINE

At the corner location shown on the sketch:

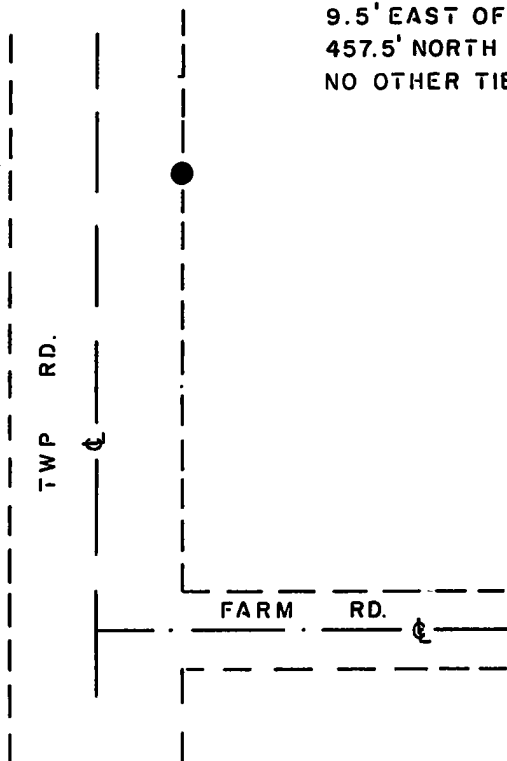
- On \_\_\_\_\_ found a \_\_\_\_\_  
DATE
- left monument as found,  lowered monument,  removed monument (explain)
- On 8-12-87 placed a 1 1/4" x 1 1/4" x 20" PERFORATED STEEL TUBE WITH  
DATE  
ALUMINUM CAP STAMPED "D.N.R SURVEY MARKER" FLUSH

### SKETCH OF REFERENCE TIES



NOTE:

MONUMENT IS  
9.5' EAST OF  $\epsilon$  N - S ROAD  
457.5' NORTH OF  $\epsilon$  ROAD EAST  
NO OTHER TIES AVAILABLE



Statement of evidence relative to this corner location is on back of page.

J.B.M. 8-18-87  
A-1105

RECORDED  
GRANTOR ✓  
GRANTEE ✓  
INDEXED ✓

I hereby certify that this document and the data contained herein was prepared by me or under my direct supervision.

Lawell R. Pinner 8-20-87

Registration No. 17005

- Land Surveyor,  Professional Engineer
- County Surveyor,  County Engineer

OFFICE OF THE COUNTY RECORDER  
County of Yellow Medicine

I hereby certify that this document was filed in the Co. Recorders office at 10:40 A.M. on the 24 day of August A.D., 1987  
County Recorder Norman J. Opdahl

By Kay Nordahl, Deputy  
DOCUMENT NO. 191475

North Quarter Corner Section 23, Township 114 North, Range 41 West

The DNR Bureau of Engineering contacted the following offices for corner information:

Secretary of State  
Yellow Medicine County Recorder  
Yellow Medicine County Highway Engineer

- 1867 U.S. General Land Office notes in the Secretary of State's Office describes this corner as a set post with charred stake, mound and pits. Government notes also show a 2" diameter pebble marked 1/4 S was set at the corner. The north line of Section 23 was run on a true line as adjoining section corner posts could be seen from one point.
- 1891 Surveyor's Record Book, on page 104, from the County Recorder's Office, contains a survey by Jonah Peterman, County Surveyor. Survey states all of the quarter posts in Section 14 were found (this corner being the south quarter). The word "Bogus" is shown by this corner.
- 1901 Surveyor's Record Book B, on page 33, from the County Recorder's Office, contains a township plat showing distances between government corners obtained from a re-monumentation survey by John Norgaard, County Surveyor. No mention of this corner is made, but a distance of 5300 ft. is shown between adjoining section corners.
- 1987 July, the DNR Bureau of Engineering conducted a search for this corner, centering on the lost position. Lost position falls on the east slope of a north-south road in an area that has been cut for the road. There is also a buried telephone cable less than a foot west of the corner area. Checked a 50 ft. north-south by 60 ft. east-west area with an electronic metal locator but found nothing.

The DNR Bureau of Engineering considers this corner to be lost and re-established it using lost methods. Lost position measures 2671.57 ft. from adjoining section corners.