

CERTIFICATE OF LOCATION OF GOVERNMENT CORNER

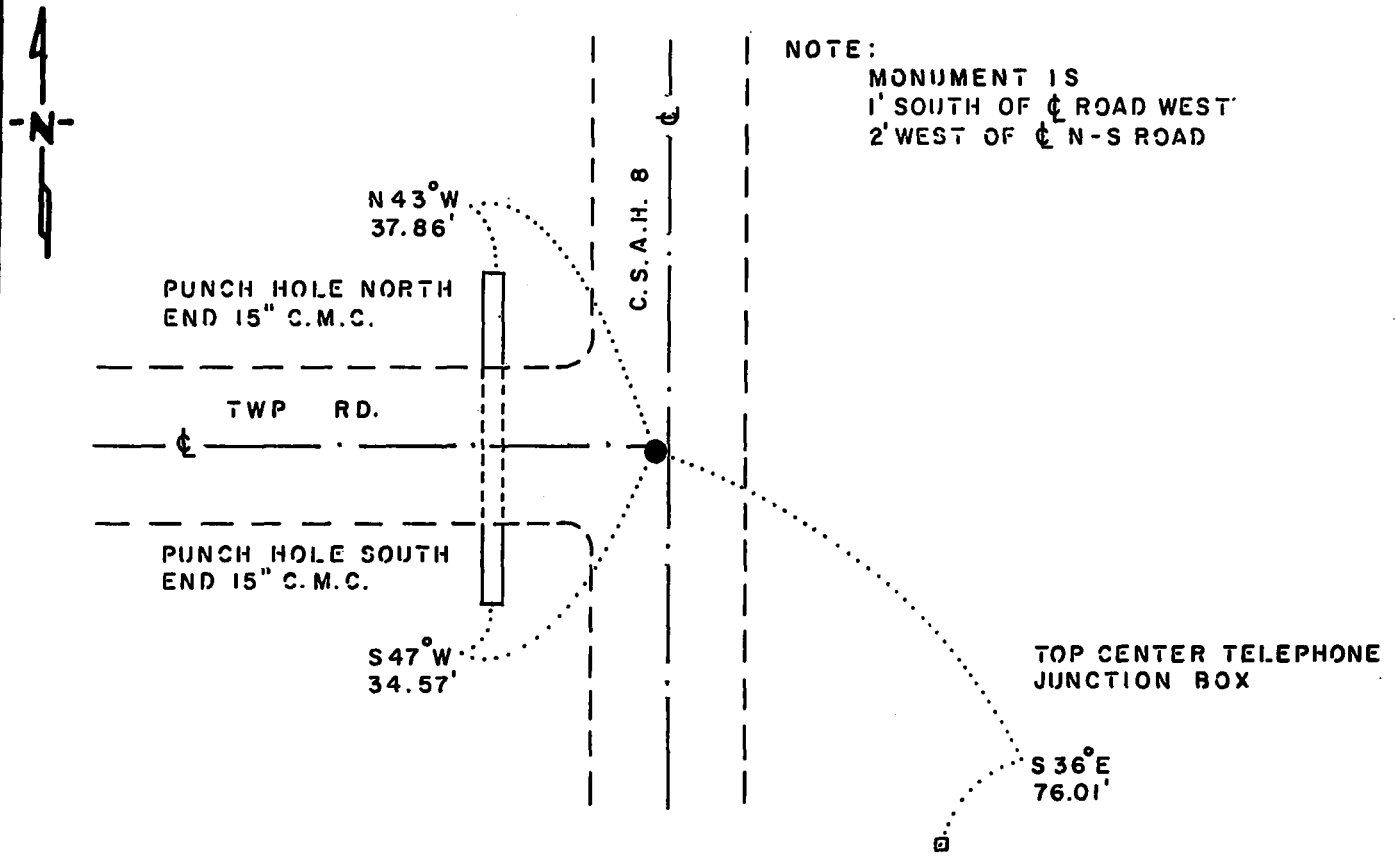
NORTHEAST Corner of Section 27, Township 114 N., Range 41 W., 5th. P.M.

STATE OF MINNESOTA, County of YELLOW MEDICINE

At the corner location shown on the sketch:

- On 4-1-87 found a 3/4" x 18" IRON PIPE, DOWN 0.8', OVER A 6" x 6" x 24" CUT GRANITE STONE, DOWN 52"
 left monument as found, lowered monument, removed monument (explain)
- On 4-1-87 placed a 1 1/4" x 1 1/4" x 20" PERFORATED STEEL TUBE WITH ALUMINUM CAP STAMPED "D.N.R. SURVEY MARKER", DOWN 0.5' OVER STONE

SKETCH OF REFERENCE TIES



NOTE:
 MONUMENT IS
 1' SOUTH OF ϵ ROAD WEST
 2' WEST OF ϵ N-S ROAD

BEARINGS OBSERVED WITH COMPASS

Statement of evidence relative to this corner location is on back of page.

J.B.M. 8-4-87
A-1105

RECORDED
 GRANTOR
 GRANTEE
 INDEXED

I hereby certify that this document and the data contained herein was prepared by me or under my direct supervision.

Lowell B. Pomeroy 8-20-87
 SIGNATURE DATE

Registration No. 17005
 Land Surveyor, Professional Engineer
 County Surveyor, County Engineer

OFFICE OF THE COUNTY RECORDER
County of Yellow Medicine

I hereby certify that this document was filed in the Co. Recorders office at 10:45 A.M. on the 24 day of August A.D., 19 87

County Recorder Norman J. Opdahl

By Kay Nordahl, Deputy

DOCUMENT NO. 191476

Northeast Corner Section 27, Township 114 North, Range 41 West

The DNR Bureau of Engineering contacted the following offices for corner information:

Secretary of State
Yellow Medicine County Recorder
Yellow Medicine County Highway Engineer

- 1867 U.S. General Land Office notes in the Secretary of State's Office describes this corner as a set post.
- 1901 Surveyor's Record Book B, on page 164, from the County Recorder's Office, contains a collection of what was found at government section corners by John Norgaard, County Surveyor, in a township re-monumentation survey. Norgaard states this corner was "found mound as used by me and other surveyors years ago". A 6" by 6" by 24" jasper granite stone was set at this location, its top level with the ground.
- 1935 August 6, on Page 307 of a book of field notes obtained from DNR Division of Waters, the following is stated:
Dug a 6 ft. by 4 ft. by 4 ft. deep hole, the center being at the intersection of County Road 8 with road west and fence line east. Found a 6" boulder down 1½ ft. and a 6" black stone 2 ft. north down 1½ ft. Found a 40 penny spike under black stone and pieces of wood under spike. Found a 6" by 6" by 24" stone monument about 5 ft. south of black stone down 4 ft. Placed two boulders and the spike over stone monument and a wood stake 1" by 2" by 14" just below road surface. Three ties were taken.
- 1941 A tie page of field notes, from the County Highway Engineer's Office, shows six ties to this corner, but no mention of a monument is made.
- 1987 March 31, the DNR Bureau of Engineering hired a backhoe operated by Peterson Excavating of Clarkfield to dig for evidence of this corner. Dug a 4 ft. east-west by 8 ft. north-south by 55" deep hole, the center at the intersection of roads north-south and west. Found a 3/4" by 18" iron pipe down 0.8 ft., 1 ft. west of centerline north-south road and on centerline road west. Encountered natural ground down 42" and found a 6" by 6" by 24" cut granite stone down 52". Placed a 3/4" by 24" iron rod on north side of stone flush with top. Stone is 1 ft. south of centerline road west, and 2 ft. west of centerline north-south road. Searched for record ties, but found nothing. Discarded found iron pipe.

Analysis of the available information led the DNR Bureau of Engineering to conclude that the found 6" by 6" by 24" cut granite stone marks the location of the corner, per John Norgaard's re-survey.