

CERTIFICATE OF LOCATION OF GOVERNMENT CORNER

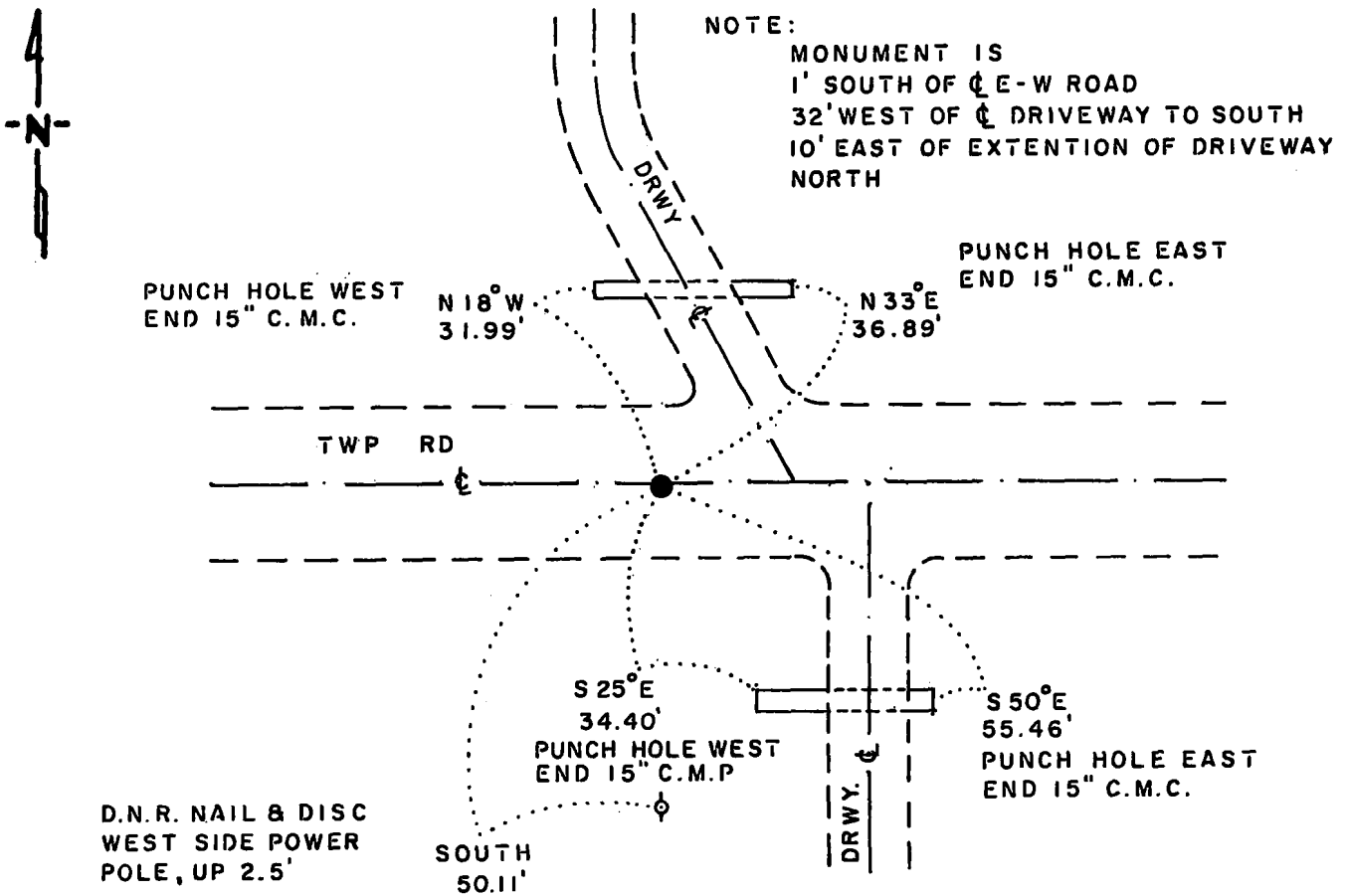
NORTH QUARTER Corner of Section 27, Township 114 N., Range 41 W., 5th. P.M.

STATE OF MINNESOTA, County of YELLOW MEDICINE

At the corner location shown on the sketch:

- On 4-1-87 found a 8" x 7" x 16" FIELD STONE, DOWN 15"
DATE
- left monument as found, lowered monument, removed monument (explain)
- On 4-1-87 placed a 1 1/4" x 1 1/4" x 20" PERFORATED STEEL TUBE WITH
DATE
ALUMINUM CAP STAMPED "D.N.R. SURVEY MARKER", DOWN 0.4', OVER STONE

SKETCH OF REFERENCE TIES



BEARINGS OBSERVED WITH COMPASS

Statement of evidence relative to this corner location is on back of page.

J.B.M. 8-4-87
A-1105

RECORDED
GRANTOR ✓
GRANTEE ✓
INDEXED

I hereby certify that this document and the data contained herein was prepared by me or under my direct supervision.

Lowell R. Pomeroy Jr. 8-20-87
DATE

Registration No. 17005

- Land Surveyor, Professional Engineer
- County Surveyor, County Engineer

OFFICE OF THE COUNTY RECORDER
County of Yellow Medicine

I hereby certify that this document was filed in the Co. Recorders office at 10:50 A.M. on the 24 day of August A.D., 19 87

County Recorder Norman J. Opdahl

By Kay Nordahl, Deputy

DOCUMENT NO. 191477

North Quarter Corner Section 27, Township 114 North, Range 41 West

The DNR Bureau of Engineering contacted the following offices for corner information:

Secretary of State
Yellow Medicine County Recorder
Yellow Medicine County Highway Engineer

1867 U.S. General Land Office notes in the Secretary of State's Office describes this corner as a set post with mound and charcoal.

1987 March 31, the DNR Bureau of Engineering hired a backhoe operated by Peterson Excavating of Clarkfield to dig for evidence of this corner. Dug a 6 ft. north-south by 16 ft. east-west by 30" deep hole, the center being midway between adjoining section corners. Found a stone with an old wood on its west side, down 15" at natural ground. Dimensions of stone are: top 8" by 7", bottom 12" by 10", height 16". Stone was found smaller end up, found no other stones of any size in excavation. Lowered stone to a depth of 24" and placed a 3/4" by 24" iron rod on its south side flush with the top of stone. Stone measures:

2643.37 ft. from the northwest corner of Section 27
2628.84 ft. from the northeast corner of Section 27
1.96 ft. south and 7.27 ft. east of the lost position

Analysis of the available information led the DNR Bureau of Engineering to conclude that the found stone marks the location of the corner.