

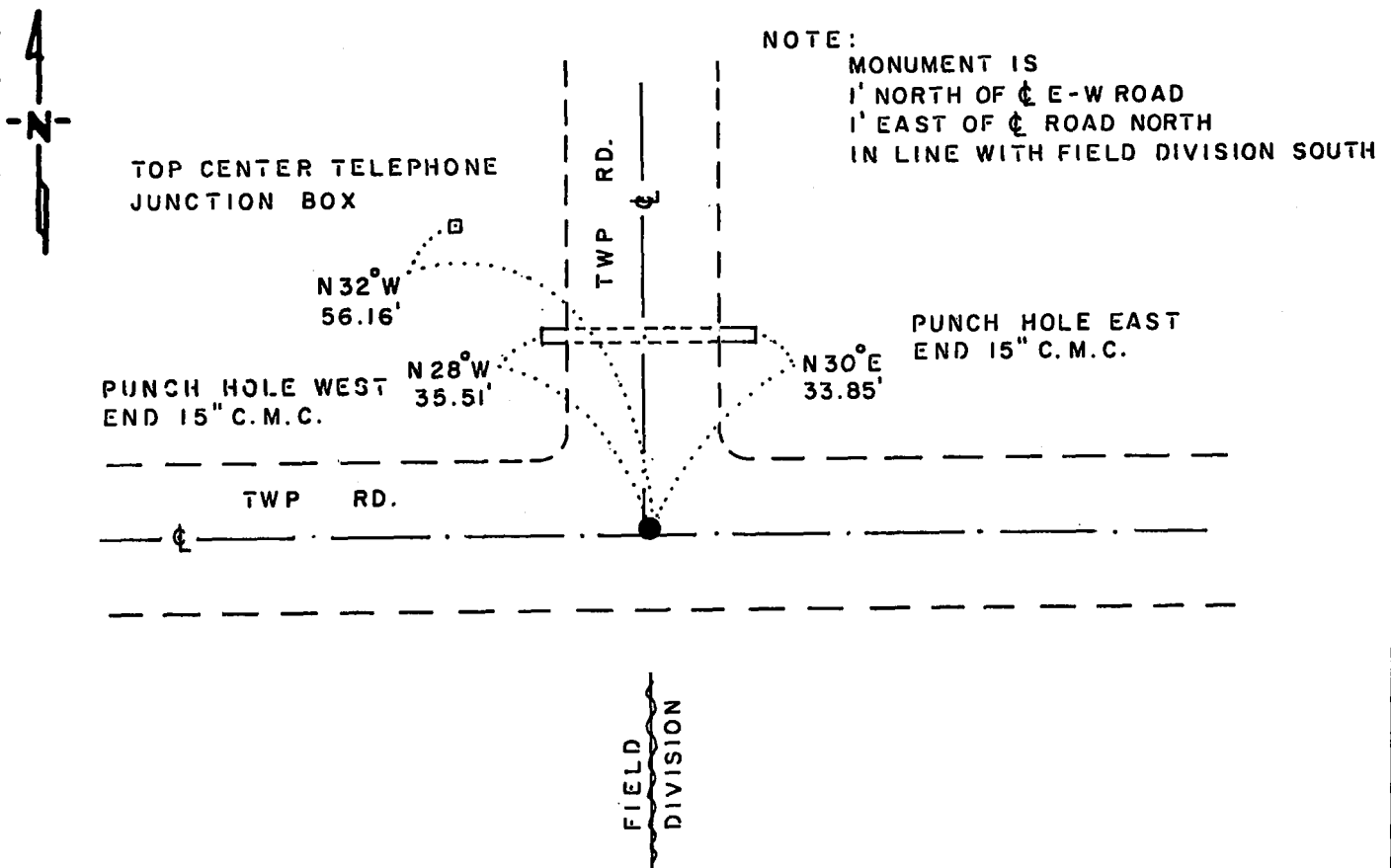
CERTIFICATE OF LOCATION OF GOVERNMENT CORNER

NORTHEAST Corner of Section 28, Township 114 N., Range 41 W., 5th P.M.
 STATE OF MINNESOTA, County of YELLOW MEDICINE

At the corner location shown on the sketch:

- On 4-1-87 found a 6" x 6" x 24" CUT GRANITE STONE, DOWN 30"
DATE
- left monument as found, lowered monument, removed monument (explain)
- On 4-1-87 placed a 1 1/4" x 1 1/4" x 20" PERFORATED STEEL TUBE WITH
DATE
ALUMINUM CAP STAMPED "D.N.R. SURVEY MARKER", DOWN 0.4', OVER STONE

SKETCH OF REFERENCE TIES



BEARINGS OBSERVED WITH COMPASS

Statement of evidence relative to this corner location is on back of page.

J.B.M. 8-4-87
A-1105

RECORDED
GRANTOR ✓
GRANTEE ✓
INDEXED ✓

I hereby certify that this document and the data contained herein was prepared by me or under my direct supervision.

Lowell R. Pomeroy Jr. 8-20-87
SIGNATURE DATE

Registration No. 170051
 Land Surveyor, Professional Engineer
 County Surveyor, County Engineer

OFFICE OF THE COUNTY RECORDER
 County of Yellow Medicine

I hereby certify that this document was filed in the Co. Recorders office at 10:55 A.M. on the 24 day of August A.D., 19 87

County Recorder Norman J. Opdahl

By Kay Nordahl, Deputy

DOCUMENT NO. 191478

Northeast Corner Section 28, Township 114 North, Range 41 West

The DNR Bureau of Engineering contacted the following offices for corner information:

Secretary of State
Yellow Medicine County Recorder
Yellow Medicine County Highway Engineer

- 1867 U.S. General Land Office notes in the Secretary of State's Office describes this corner as a set post.
- 1901 Surveyor's Record Book B, on page 164, from the County Recorder's Office, contains a collection of what was found at government section corners by John Norgaard, County Surveyor, in a township re-monumentation survey. Norgaard states, "found stake in the government mound". A 6" by 6" by 24" jasper granite stone was set at this location, its top level with the ground.
- 1901 October 10, Surveyor's Record Book, on Page 171, from the County Recorder's Office, contains a survey of Section 21 by John Norgaard, County Surveyor. Norgaard states at all section corners found stone monument set by himself in re-survey. Corner is shown:
2650 ft. from the east quarter corner Section 21
5300 ft. from the northeast corner Section 21
- 1911 Surveyor's Record Book, on page 235, from the County Recorder's Office, contains a survey of Section 21 by John Norgaard, County Surveyor. Norgaard states, "at all section corners found the jasper stone monuments set by me at the re-survey of the county." Corner is shown:
2647.0 ft. from the east quarter corner of Section 21
5294.0 ft. from the northeast corner of Section 21
- 1935 August 6, on Page 308 of a book of field notes obtained from DNR Division of Waters, the following is stated:
Dug at the intersection of an east-west road, road north and fence line south. Found a 6" by 6" by 24" stone monument down 12" covered by rotted wood. Three ties were taken. On Page 234 of this field book, a distance of 5299.85 feet from this corner to the northeast corner of Section 21 is recorded.
- 1987 March 31, the DNR Bureau of Engineering hired a backhoe operated by Peterson Excavating of Clarkfield to dig for evidence of this corner. Dug a 4 ft. north-south by 8 ft. east-west by 3 ft. deep hole, the center at the intersection of roads east-west and north and field division south. Found a 6" by 6" by 24" cut granite stone down 30" at natural ground. Placed a 3/4" by 24" iron rod on its west side flush with stone. Searched for record ties, but found nothing. Stone measures 5299.23 ft. from the northeast corner Section 21.

Analysis of the available information led the DNR Bureau of Engineering to conclude that the found 6" by 6" by 24" stone marks the location of the corner per John Norgaard's re-survey.