

CERTIFICATE OF LOCATION OF GOVERNMENT CORNER

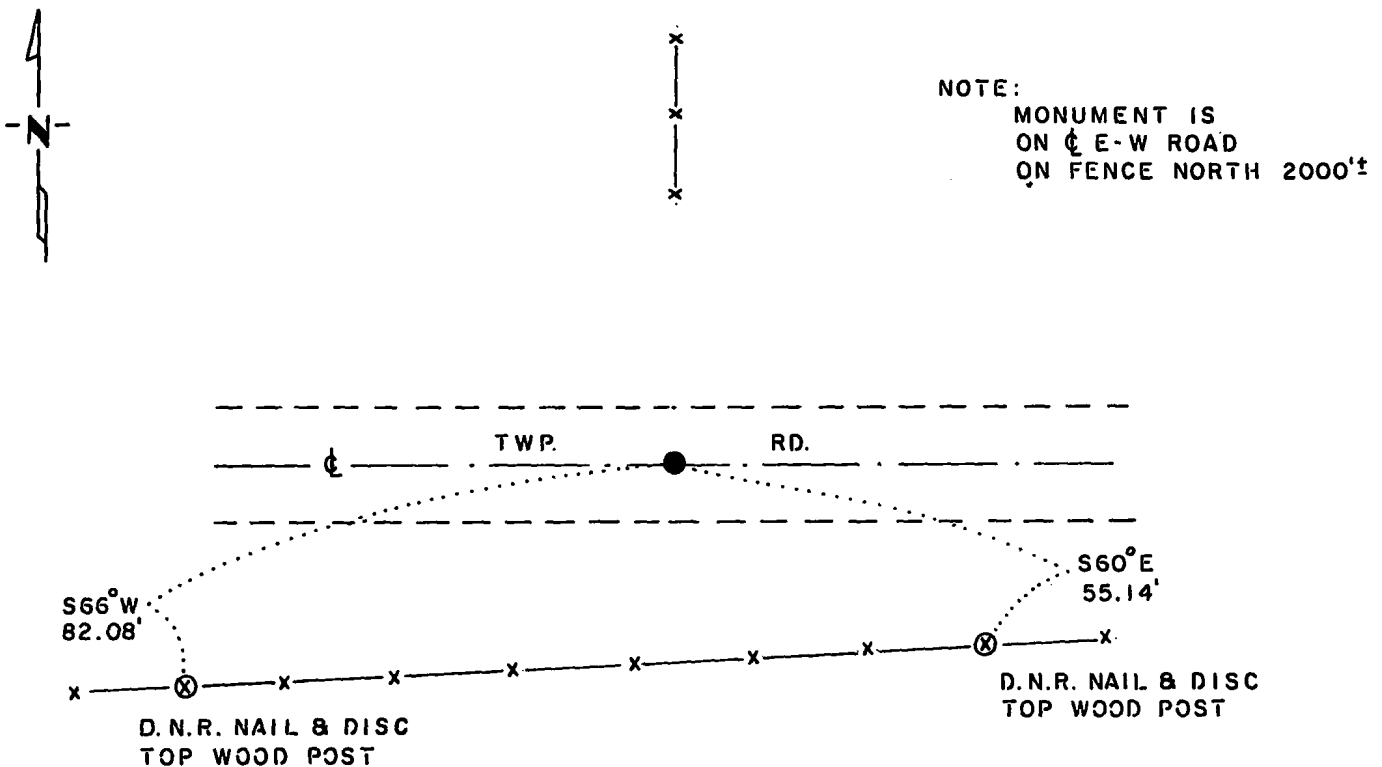
NORTH QUARTER Corner of Section 28, Township 115 N., Range 43 W., 5 th. P.M.

STATE OF MINNESOTA, County of YELLOW MEDICINE

At the corner location shown on the sketch:

- On 6-22-83 found a RAILROAD SPIKE, DOWN 0.2'
DATE
- left monument as found, lowered monument, removed monument (explain)
- On 9-22-87 placed a 1 1/4" x 1 1/4" x 20" PERFORATED STEEL TUBE WITH
DATE
ALUMINUM CAP STAMPED "DNR SURVEY MARKER".

SKETCH OF REFERENCE TIES



TIES VERIFIED 9-22-87
BEARINGS OBSERVED WITH COMPASS

Statement of evidence relative to this corner location is on back of page.

J.B.M. 3-20-84
G-985

RECORDED
GRANTOR ✓
GRANTEE ✓
INDEXED

I hereby certify that this document and the data contained herein was prepared by me or under my direct supervision.

Lowell R. Pomeroy 10-12-87
SIGNATURE DATE

Registration No. 17005

- Land Surveyor, Professional Engineer
- County Surveyor, County Engineer

OFFICE OF THE COUNTY RECORDER
County of Yellow Medicine

I hereby certify that this document was filed in the Co. Recorders office at 9:45 A.M. on the 14 day of October A.D., 1987

County Recorder Dorman J. Opdahl

By _____, Deputy

DOCUMENT NO. 191752

North Quarter Corner Section 28, Township 115 North, Range 43 West

This corner was originally established by the U.S. General Land Office survey in 1867. The government notes show corner marked with a wood post set in mound of earth with pits and trench dug around the mound.

In June 1983, the DNR Bureau of Engineering contacted the Yellow Medicine County Offices of the Recorder and Highway Engineer for corner information.

The following information was obtained from the County Recorder:

Surveyor's Record Book B, on Page 109, recorded by John Norgaard, County Surveyor, dated September 27, 1901, calls the northeast corner of Section 28 as being set proportionally from this corner - referred to as "the north quarter post Section 28" - and other adjoining quarter corners. Distances from this quarter corner are shown as 2640 feet to the northwest corner Section 28 and 2612.5 to the northeast corner Section 28, survey is noted as being done in 1899.

On Page 377 of Survey Plat Book, a survey of Section 21 is shown, dated 1916 by John Norgaard, County Surveyor. The following is stated about this corner: "found stone in center of grade and on fence lines running north and south - same point agrees with distances as I found 17 years ago." Distances from this corner are shown as 2640 feet to the northwest corner Section 28 and 2612 feet to the northeast corner Section 28.

In August 1971, the DNR Bureau of Engineering went to the area of the corner and located the centerline of an east-west road and fence line north. On August 26, 1971, the DNR Bureau of Engineering hired a backhoe operated by Dolan Johnson of Russell to dig for evidence of this corner. Dug down to a depth of 4 feet at the area of the corner, but found no evidence. Set a railroad spike at the previously mentioned centerline of road and fence. Measured a distance of 2617.98 feet from this set railroad spike to the northeast corner of Section 28.

In June 1983, the DNR Bureau of Engineering traversed to the area of the corner and found the railroad spike set in 1971. Spike was in good condition and in the centerline of the east-west road, but the fence north now starts approximately 1260 feet north of the centerline of road. Located and measured distances from this railroad spike to the northeast and northwest corners of Section 28 distances being 2617.02 feet and 2641.83 feet respectively. Computed a position for this using Norgaard's distances proportionally between the northeast and northwest corners of Section 28. This computed position fell 2.99 feet south and 1.42 feet east of the railroad spike. As Norgaard's statement about the corner indicates it checks with occupation (1955 air photos also show this occupation) the position of the railroad spike was accepted as marking the location of the corner.

On September 22, 1987, the DNR Bureau of Engineering revisited the corner and found the railroad spike in good condition. Replaced same with a DNR Survey Marker.