

CERTIFICATE OF LOCATION OF GOVERNMENT CORNER

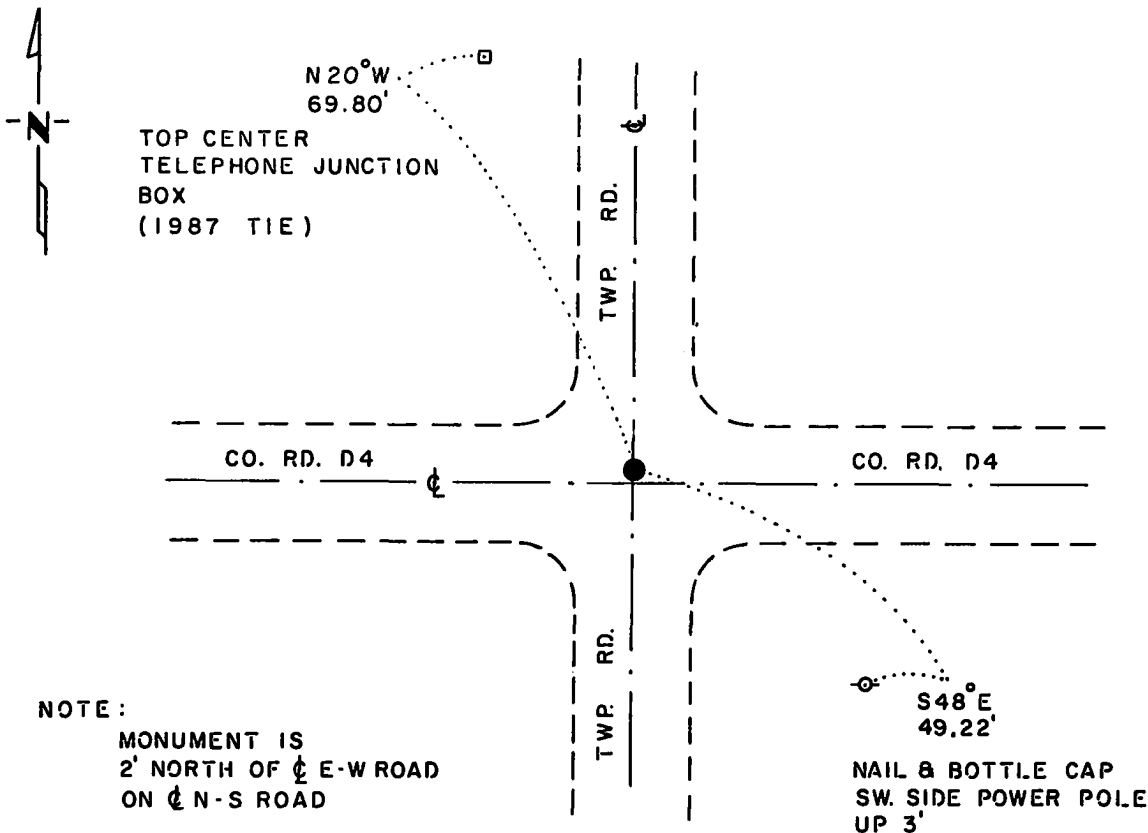
NORTHEAST Corner of Section 21, Township 115 N., Range 43 W., 5th P.M.

STATE OF MINNESOTA, County of YELLOW MEDICINE

At the corner location shown on the sketch:

- On 6-22-83 found a 6"x8"x12" FIELD STONE WITH WOOD HUB BESIDE IT
DATE
OVER A 6"x6" CUT GRANITE STONE, DOWN 27"
 left monument as found, lowered monument, removed monument (explain)
- On 6-22-83 placed a 1 1/4"x1 1/4"x11" PERFORATED STEEL TUBE WITH
DATE
ALUMINUM CAP STAMPED "D.N.R. SURVEY MARKER" OVER STONES, DOWN 0.2'

SKETCH OF REFERENCE TIES



NOTE:
 MONUMENT IS
 2' NORTH OF ϕ E-W ROAD
 ON ϕ N-S ROAD

TIES VERIFIED 9-22-87
 BEARINGS OBSERVED WITH COMPASS

Statement of evidence relative to this corner location is on back of page.

J. B. M. 7-29-83
 G-985

RECORDED
 GRANTOR
 GRANTEE
 INDEXED

I hereby certify that this document and the data contained herein was prepared by me or under my direct supervision.

Lowell R. Pomeroy Jr. 10-12-87
SIGNATURE DATE

Registration No. 17005

- Land Surveyor, Professional Engineer
- County Surveyor, County Engineer

OFFICE OF THE COUNTY RECORDER
 County of Yellow Medicine

I hereby certify that this document was filed in the Co. Recorders office at 9:50 A.M. on the 14 day of October A.D., 1987

County Recorder Norman J. Godwin

By _____, Deputy

DOCUMENT NO. 191753

Northeast Corner Section 21, Township 115 North, Range 43 West

This corner was originally established by the U.S. General Land Office survey in 1867. The government notes show corner marked with a wood post set in mound of earth with pits and trench dug around the mound.

In June 1983, the DNR Bureau of Engineering contacted the Yellow Medicine County Offices of the Recorder and Highway Engineer for corner information.

The following information was obtained from the County Recorder:

Surveyor's Record Book B, on Page 108, dated September 27, 1901, the following is written about the corner by John Norgaard, County Surveyor: "found the government mound and pits, set top of monument level with ground." The monument referred to by Norgaard, according to the introductory page of Book B, is a jasper granite stone 2 feet long and 6" by 6" square, set in an 1899 survey. A distance of 5270 feet is shown from this corner to the northeast corner of Section 28 ($\frac{1}{4}$ corner shown at a lost position).

On Page 348 of Survey Plat Book, a survey of Section 16 is shown dated 1915, by John Norgaard, County Surveyor. This corner is said to be a "found jasper monument". A distance of 5274 feet is shown for the north line of Section 21 with north quarter corner set lost. The information concerning the distances and all corners also appears on Page 366 of Survey Plat Book, dated 1916, by John Norgaard. On Page 377 of Survey Plat Book a survey of Section 21 is shown, dated 1916, by John Norgaard. No mention of the corner is made, but distances of 5270 are shown for both the north and east lines of Section 21 with quarter corners being set at lost positions.

The following ties were obtained from the County Engineer's Office in June 1983 for this corner:

fence post, 104.0 feet SW
fence post, 66.9 feet NE
fence post, 84.6 feet SE, no date indicated.

No mention is made as to what is at the corner.

On August 26, 1971, the DNR Bureau of Engineering went to the area of the corner and located the intersection of roads north-south and east-west. On August 26, 1971, the DNR Bureau of Engineering hired a backhoe operated by Dolan Johnson of Russell to dig for evidence of this corner. Dug at the intersection of roads and down 1.8 feet found a stone with a 1" by 2" hub beside it. Left stone as found and set a 1" diameter iron pipe with a $\frac{1}{2}$ " diameter iron pipe inside over the stone and took the following ties:

nail and bottle cap, west side power pole, 48.90 feet SE
nail and bottle cap, SW side telephone pole, 46.25 feet NW
nick in west end concrete culvert, 31.85 feet SW
nick in east end concrete culvert, 30.70 feet SE

Sketch of ties indicate monument to be in the approximate intersection of roads.

In June 1983, the DNR Bureau of Engineering traversed to the area of the corner and located the intersection of roads north-south and east-west. Dug by hand and found a 1" by 12" iron pipe with a $\frac{1}{2}$ " by 12" iron pipe inside down 0.1 of a foot over a 6" by 8" by 12" field stone with deteriorated wood hub beside it down 14" over a 6" by 6" cut granite stone down 27". Measured distances of 2637.22 feet to the north quarter corner of Section 21 and 2641.01 feet to the east quarter corner Section 21. Accepted the 6" by 6" granite stone as the perpetuation of the original government corner. Left stones as found and set a DNR Survey Marker over them.

On September 22, 1987, the DNR Bureau of Engineering revisited the corner and found the DNR Survey Marker, as previously set, in good condition.