

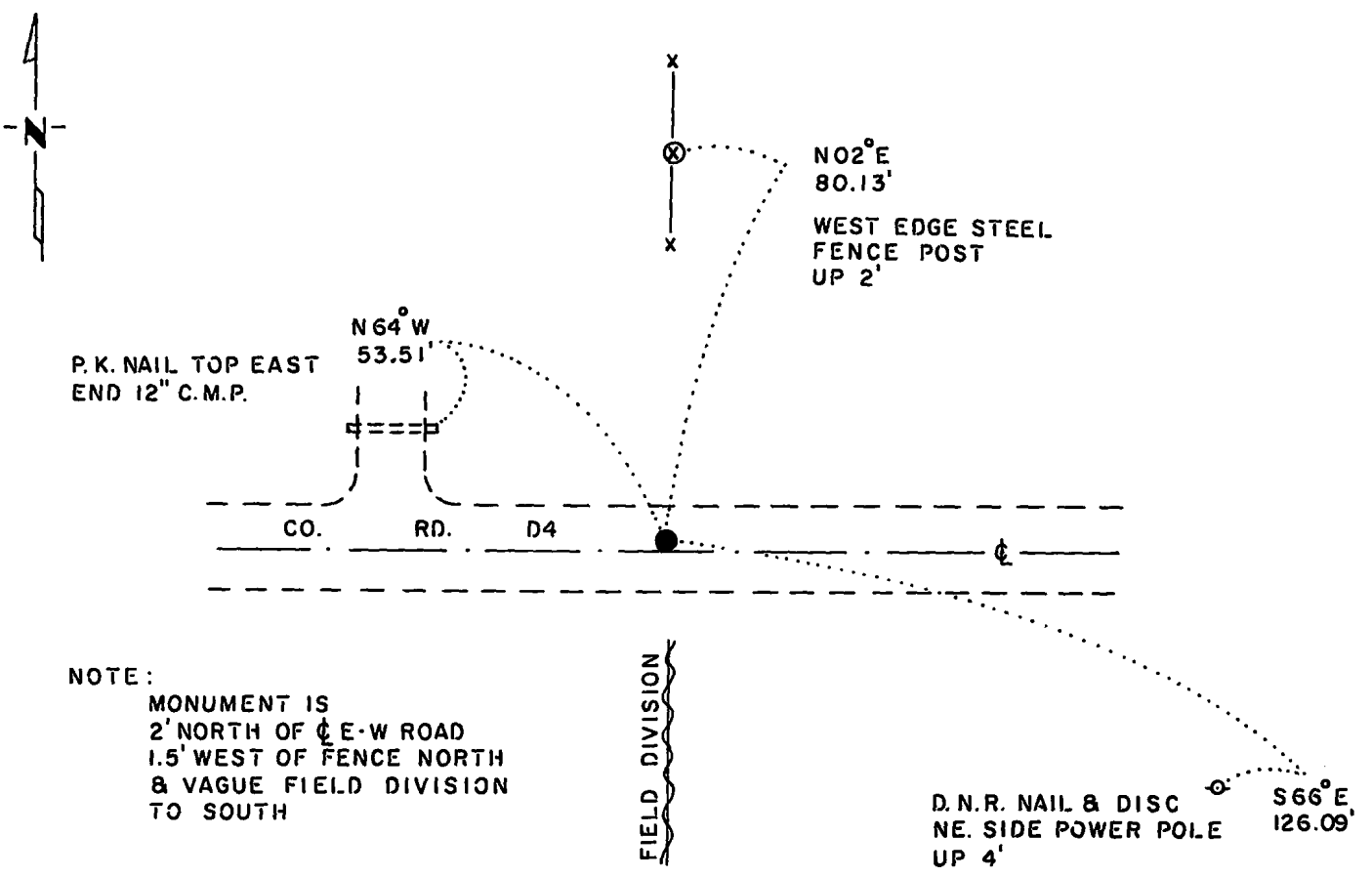
# CERTIFICATE OF LOCATION OF GOVERNMENT CORNER

NORTH QUARTER Corner of Section 21, Township 115 N., Range 43 W., 5 th. P.M.  
 STATE OF MINNESOTA, County of YELLOW MEDICINE

At the corner location shown on the sketch:

- On 7-12-83 found a 8"x9"x5" FIELD STONE, DOWN 7" UNDER OLD ROAD.  
DATE  
OVER A 7"x9"x9" FIELD STONE  
 left monument as found,  lowered monument,  removed monument (explain)
- On 7-12-83 placed a 1 1/4"x1 1/4"x20" PERFORATED STEEL TUBE WITH ALUMINUM  
DATE  
CAP STAMPED "D. N. R. SURVEY MARKER" OVER STONE, DOWN 4"

### SKETCH OF REFERENCE TIES



NOTE:  
 MONUMENT IS  
 2' NORTH OF  $\perp$  E-W ROAD  
 1.5' WEST OF FENCE NORTH  
 & VAGUE FIELD DIVISION  
 TO SOUTH

TIES VERIFIED 9-22-87  
 BEARINGS OBSERVED WITH COMPASS

Statement of evidence relative to this corner location is on back of page.

J. B. M. 7-29-83  
 G-985

**RECORDED**  
 GRANTOR  
 GRANTEE  
**INDEXED**

I hereby certify that this document and the data contained herein was prepared by me or under my direct supervision.

Lowell R. Pomeroy Jr 10-12-87  
SIGNATURE DATE

Registration No. 17005  
 Land Surveyor,  Professional Engineer  
 County Surveyor,  County Engineer

OFFICE OF THE COUNTY RECORDER  
 County of Yellow Medicine

I hereby certify that this document was filed in the Co. Recorders office at 9:55 A.M. on the 14 day of October A.D., 19 87

County Recorder Dennis J. Gjedde

By \_\_\_\_\_, Deputy  
 DOCUMENT NO. 191754

North Quarter Corner Section 21, Township 115 North, Range 43 West

This corner was originally established by the U.S. General Land Office survey in 1867. The government notes show corner marked with a wood post set in mound of earth with pits and trench dug around the mound.

In June 1983, the DNR Bureau of Engineering contacted the Yellow Medicine County Offices of the Recorder and Highway Engineer for corner information.

The following information was obtained from the County Recorder:

On Page 348 of Survey Plat Book a survey of Section 16 is shown, dated June 1915, by John Norgaard, County Surveyor. The following is stated about this corner: "located at equal distance and set stone," equal distances of 2637 feet are shown between this corner and the northeast and northwest corners of Section 21. This same information also appears on Page 366 of Survey Plat Book, dated 1916, by John Norgaard.

On Page 377 of Survey Plat Book a survey of Section 21 is shown, dated 1916, by John Norgaard, County Surveyor. The following is stated about this corner: "found stone set by me on year ago," equal distances of 2635 feet are shown between this corner and the northeast and northwest corners of Section 21.

In July 1983, the DNR Bureau of Engineering traversed to the area of the corner and located the centerline of an east-west road and fence line north and field division south. Dug this corner by hand and found an 8" by 9" by 5" field stone down 7" under an old road bed and over a 7" by 9" by 9" field stone. Measured distances of 2637.22 feet to the northeast corner of Section 21 and 2638.99 feet to the northwest corner of Section 21. Computed a lost position for this corner which fell 1.36 feet south and 0.88 feet west of the found stones. Accepted the stones as the perpetuation of the original government corner. Lowered both stones so the top of the upper stone is now down 24" and set a DNR Survey Marker over the stones.

On September 22, 1987, the DNR Bureau of Engineering revisited the corner and found the DNR Survey Marker, as previously set, in good condition.