

CERTIFICATE OF LOCATION OF GOVERNMENT CORNER

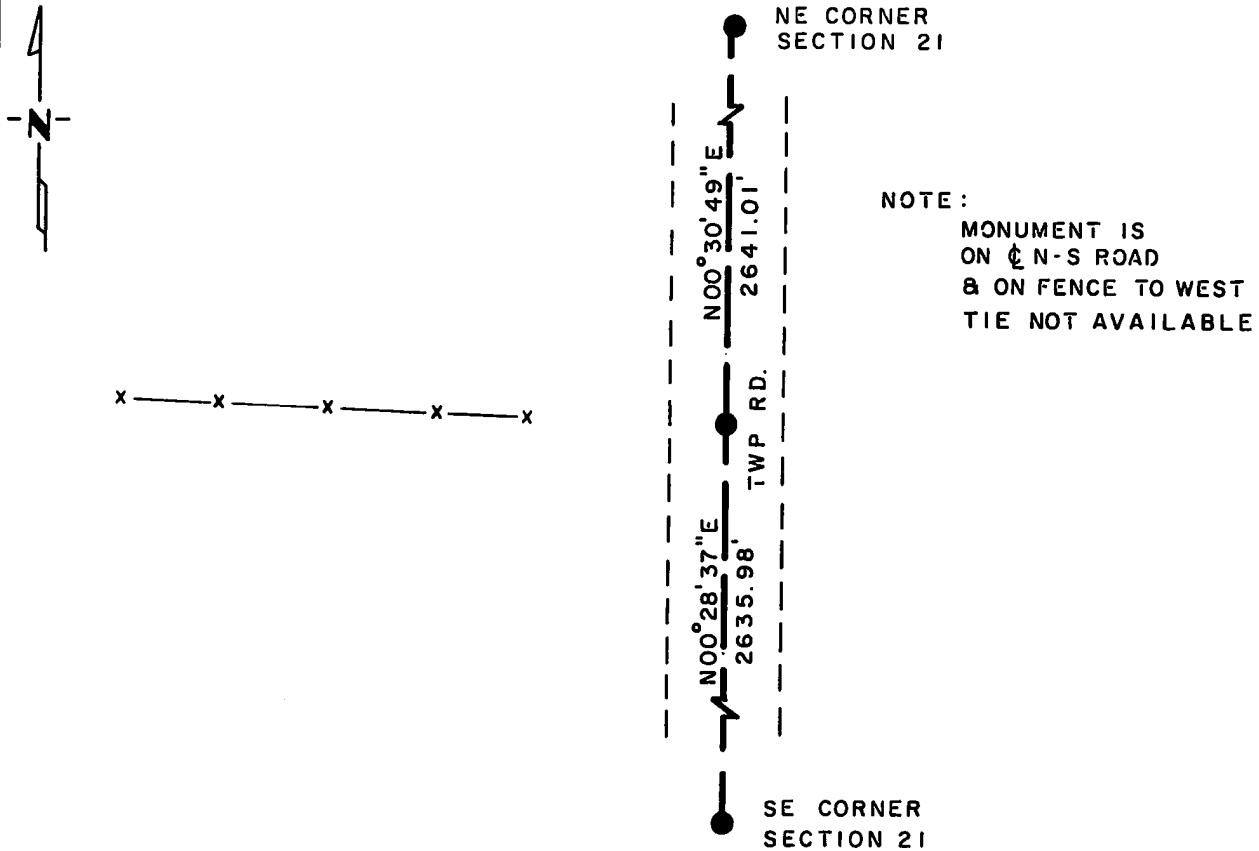
EAST QUARTER Corner of Section 21, Township 115 N., Range 43 W., 5th P.M.

STATE OF MINNESOTA, County of YELLOW MEDICINE

At the corner location shown on the sketch:

- On 6-22-83 found a RAILROAD SPIKE, DOWN 0.2'
DATE
- left monument as found, lowered monument, removed monument (explain)
- On 9-22-87 placed a 1 1/4" x 1 1/4" x 20" PERFORATED STEEL TUBE WITH
DATE ALUMINUM CAP STAMPED "D.N.R. SURVEY MARKER".

SKETCH OF REFERENCE TIES



TIES VERIFIED 9-22-87
BEARINGS ARE ASSUMED ORIENTATION

Statement of evidence relative to this corner location is on back of page.

J. B. M. 3-20-84
G-985

I hereby certify that this document and the data contained herein was prepared by me or under my direct supervision.

Lowell R. Pomeroy, Jr. 10-12-87
SIGNATURE DATE

Registration No. 17005

- Land Surveyor, Professional Engineer
- County Surveyor, County Engineer

OFFICE OF THE COUNTY RECORDER
County of Yellow Medicine

RECORDED
GRANTOR ✓
GRANTEE ✓
INDEXED

I hereby certify that this document was filed in the Co. Recorders office at 10:00 A.M. on the 14 day of October A.D., 19 87

County Recorder Dennis J. Gdala

By _____, Deputy

DOCUMENT NO. 191755

East Quarter Corner Section 21, Township 115 North, Range 43 West

This corner was originally established by the U.S. General Land Office survey in 1867. The government notes show corner marked with a wood post set in mound of earth with pits and trench dug around the mound.

In June 1983, the DNR Bureau of Engineering contacted the Yellow Medicine County Offices of the Recorder and Highway Engineer for corner information.

The following information was obtained from the County Recorder:

Surveyor's Record Book B, on Page 109, recorded by John Norgaard, County Surveyor, dated September 27, 1901, calls the northeast corner of Section 28 as being set proportionally from this corner - referred to as the east quarter post Section 21 - and other adjoining quarter corners. A distance of 2635 feet is shown from this corner to the northeast and southeast corners of Section 21.

On Page 377 of Survey Plat Book a survey of Section 21 is shown, dated 1916 by John Norgaard, County Surveyor. The following is stated about this corner: "located on line and equal distance between section corners." Distances from the northeast and southeast corners of Section 21 to this corner are shown as 2635 feet. No mention is made of a monument.

On September 1, 1971, the DNR Bureau of Engineering went to the area of the corner and located the centerline of a north-south road and a fence line west which runs to the area of the center of Section 21. On September 1, 1971, the DNR Bureau of Engineering hired a backhoe operated by Dolan Johnson of Russell to dig for evidence of this corner. Dug down to depth of 4 feet at the area of corner but found no evidence. Set a railroad spike at the previously mentioned centerline of road and fence. Measured a distance of 2636.29 feet from this set railroad spike to the northeast corner of Section 28.

In June 1983, the DNR Bureau of Engineering traversed to the area of the corner and found the railroad spike set in 1971. Spike was in good condition and in the centerline of the north-south road and fence west. Also located the northeast and southeast corners of Section 21 for distance comparisons from the railroad spike. Measured 2635.98 feet to the southeast corner Section 21 and 2641.01 feet to the northeast corner Section 21. Computed a lost position for this corner which fell 2.51 feet north and 0.87 feet east of the railroad spike. The railroad spike was accepted as marking the location of the corner.

On September 22, 1987, the DNR Bureau of Engineering revisited the corner and found the railroad spike in good condition. Replaced same with a DNR Survey Marker.