

CERTIFICATE OF LOCATION OF GOVERNMENT CORNER

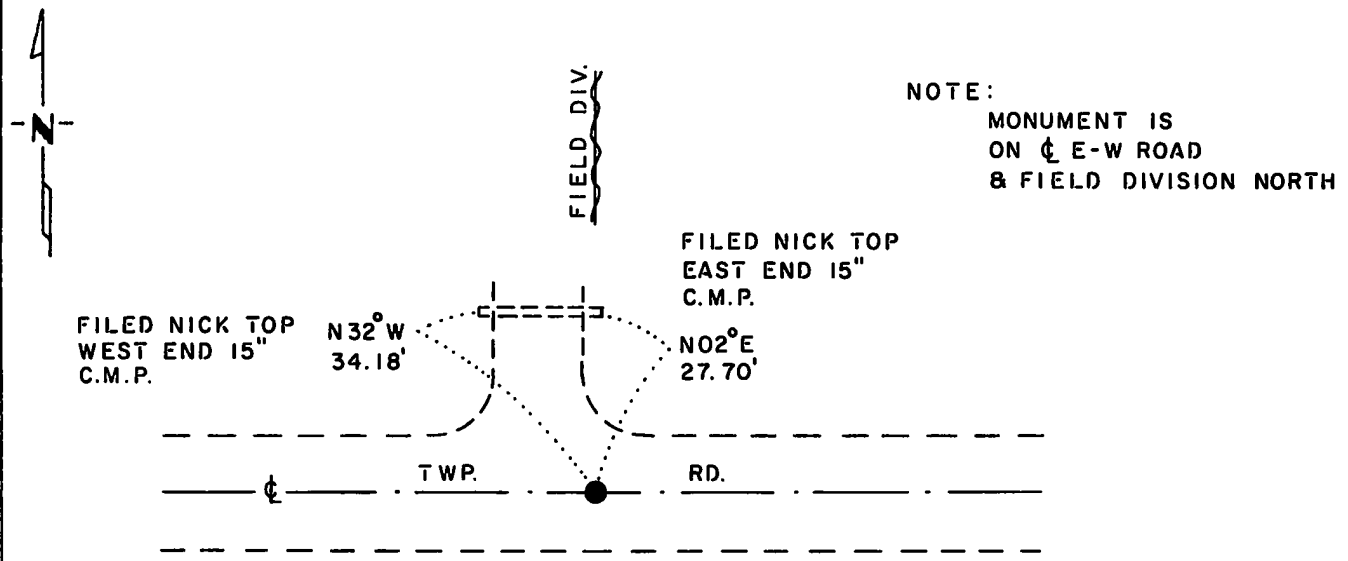
NORTH QUARTER Corner of Section 27, Township 115 N., Range 43 W., 5th P.M.

STATE OF MINNESOTA, County of YELLOW MEDICINE

At the corner location shown on the sketch:

- On 6-22-83 found a 4"x7"x11" STONE, DOWN 24"
DATE
- left monument as found, lowered monument, removed monument (explain)
- On 6-22-83 placed a 1 1/4"x1 1/4"x20" PERFORATED STEEL TUBE WITH ALUMINUM
DATE CAP STAMPED "D.N.R. SURVEY MARKER" OVER STONE, DOWN 0.3'

SKETCH OF REFERENCE TIES



NOTE:
MONUMENT IS
ON ϕ E-W ROAD
& FIELD DIVISION NORTH

TIES VERIFIED 9-22-87
BEARINGS OBSERVED WITH COMPASS

Statement of evidence relative to this corner location is on back of page.

J. B. M. 7-29-83
G-985

I hereby certify that this document and the data contained herein was prepared by me or under my direct supervision.

Lowell R. Pomeroy Jr. 10-12-87
SIGNATURE DATE

Registration No. 17005
 Land Surveyor, Professional Engineer
 County Surveyor, County Engineer

OFFICE OF THE COUNTY RECORDER
County of Yellow Medicine

RECORDED
GRANTOR
GRANTEE
INDEXED

I hereby certify that this document was filed in the Co. Recorders office at 10:05 A.M. on the 14 day of October A.D., 19 87

County Recorder Norman J. Opatow

By _____, Deputy

DOCUMENT NO. 191756

North Quarter Corner Section 27, Township 115 North, Range 43 West

This corner was originally established by the U.S. General Land Office survey in 1867. The government notes show corner marked with a wood post set in mound of earth with pits and trench dug around the mound.

In June 1983, the DNR Bureau of Engineering contacted the Yellow Medicine County Offices of the Recorder and Highway Engineer for corner information.

The following information was obtained from the County Recorder:

Surveyor's Record Book B, on Page 109, recorded by John Norgaard, County Surveyor, dated September 27, 1901, calls the northeast corner of Section 28 as being set proportionally from this corner - referred to as "the north quarter post Section 27" - and other adjoining quarter corners. A distance of 2612.5 feet is shown from this corner to the northeast corner of Section 28, survey is noted as being done in 1899.

In July 1958, the DNR Bureau of Engineering did a survey in Section 27. This corner is shown, but no mention is made as to what was found or set. A distance of 5247.0 feet is shown between adjoining section corners.

In August 1971, the DNR Bureau of Engineering went to the area of the corner and located the centerline of an east-west road and field divisions north and south. On August 26, 1971, the DNR Bureau of Engineering hired a backhoe operated by Dolan Johnson of Russell to dig for evidence of this corner. Dug at the corner area and found a stone down 1.0 feet, lowered stone down to 2.0 feet and set a 1" diameter iron pipe with $\frac{1}{2}$ " iron pipe inside. Stone is in line with field division north and ± 3 feet west of field division south. Measured a distance of 2605.68 feet to the northeast corner of Section 28 and took the following ties:

filed nick west end C.M.C. 33.90 feet NW

nick east end C.M.C. 27.35 feet NNE

2nd steel fence post west of field division south 51.0 feet SW

2nd steel fence post east of field division south 51.3 feet SE

In June 1983, the DNR Bureau of Engineering traversed to the area of the corner and found a 1" by 12" iron pipe with a $\frac{1}{2}$ " by 12" iron pipe inside down 0.2 of a foot set over a 4" by 7" by 11" stone down 24". Located and measured distances from the stone to the northeast and northwest corners of Section 27 and recorded distances of 2643.02 feet and 2605.23 feet respectively. Stone is on centerline of the east-west road and on field division north, nothing south. Additional computing was done in relationship to John Norgaards 1899 survey. When using a GLO proportion for the northeast corner of Section 28, the distance from the northeast corner of Section 28 to the found stone was found to be 2605.88 feet. As this is the case, the stone was accepted as the perpetuation of the government corner. Left stone as found and replaced iron pipes with a DNR Survey Marker.

On September 22, 1987, the DNR Bureau of Engineering revisited the corner and found the DNR Survey Marker, as previously set, in good condition.