

CERTIFICATE OF LOCATION OF GOVERNMENT CORNER

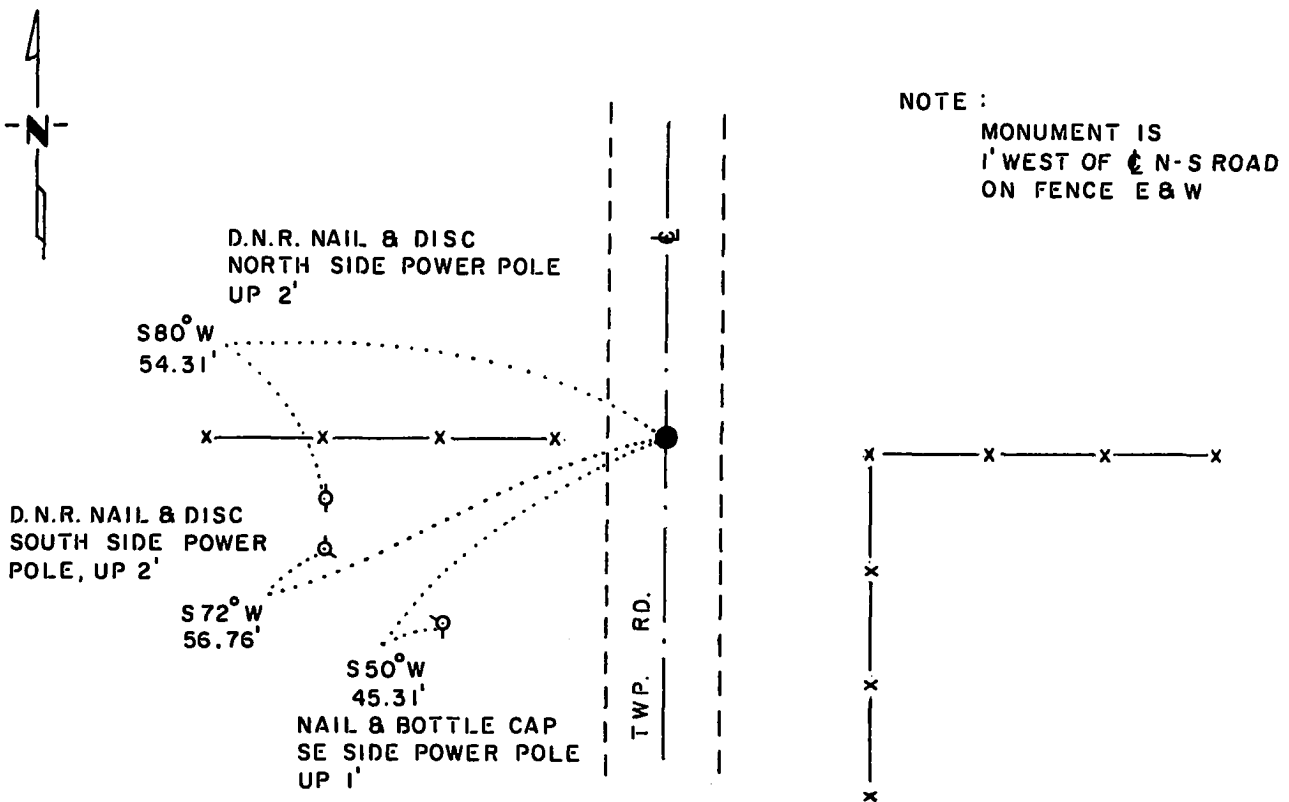
EAST QUARTER Corner of Section 28, Township 115 N, Range 43 W, 5th P.M.

STATE OF MINNESOTA, County of YELLOW MEDICINE

At the corner location shown on the sketch:

- On 6-22-83 found a 6"x7"x9" FIELD STONE, DOWN 13"
DATE
- left monument as found, lowered monument, removed monument (explain)
- On 6-22-83 placed a 1 1/4"x1 1/4"x8" PERFORATED STEEL TUBE WITH ALUMINUM
DATE CAP STAMPED "D.N.R. SURVEY MARKER", OVER STONE, DOWN 0.4'

SKETCH OF REFERENCE TIES



TIES VERIFIED 9-22-87
BEARINGS OBSERVED WITH COMPASS

Statement of evidence relative to this corner location is on back of page.

J. B. M. 7-29-83
G-985

I hereby certify that this document and the data contained herein was prepared by me or under my direct supervision.

Lowell R. Pomeroy Jr. 10-12-87
SIGNATURE DATE

Registration No. 17005

- Land Surveyor, Professional Engineer
- County Surveyor, County Engineer

OFFICE OF THE COUNTY RECORDER
County of Yellow Medicine

I hereby certify that this document was filed in the Co. Recorders office at 10:10 A.M. on the 14 day of October A.D., 1987

County Recorder Thomas J. Goshall

By _____, Deputy

DOCUMENT NO. 191757

RECORDED
GRANTOR
GRANTEE
INDEXED

East Quarter Corner Section 28, Township 115 North, Range 43 West

This corner was originally established by the U.S. General Land Office survey in 1867. The government notes show corner marked with a wood post set in mound of earth with pits and trench dug around the mound.

In June 1983, the DNR Bureau of Engineering contacted the Yellow Medicine County Offices of the Recorder and Highway Engineer for corner information.

The following information was obtained from the County Recorder:

Surveyor's Record Book B, on Page 109, recorded by John Norgaard, County Surveyor, dated September 27, 1901, calls the northeast corner of Section 28 as being set proportionally from this corner - referred to as "the East Quarter post Section 28" - and other adjoining quarter corners. Distances from this quarter corner are shown as 2635 feet to the northeast corner of Section 28 and 2642 feet to the southeast corner of Section 28. The survey is noted as being done in 1899.

On Page 210 of Survey Plat Book a survey of Section 26 is shown, dated 1929, by John Norgaard, County Surveyor. The following is written about the corner. "W $\frac{1}{4}$ post 27, 7 ft. west of line." No mention is made as to what line is referred to.

In July 1958, the DNR Bureau of Engineering traversed to the area of the corner and set a spike at the intersection of the centerline of the north-south road and fence lines east and west. Measured equal distances of 2638.9 feet from this spike to the northeast and southeast corners of Section 28, spike is also shown as being on line between the above mentioned section corners.

On September 1, 1971, the DNR Bureau of Engineering went to the area of the corner and located the centerline of a north-south road and fence lines east and west.

On September 1, 1971, the DNR Bureau of Engineering hired a backhoe operated by Dolan Johnson of Russell to dig for evidence of this corner. Dug at the corner area and found a stone down 1 foot. Set a 1 $\frac{1}{2}$ " diameter iron pipe with a $\frac{1}{2}$ " diameter iron pipe inside over stone. Stone is in line with fences east and west and 1.0 feet west of centerline north-south road. Measured a distance of 2638.61 feet from the stone to the northeast corner of Section 28. Took the following ties:

- nail and bottle cap, south side corner fence post, 32.0 feet east
- nail and bottle cap, NE side corner fence post, 27.95 feet west
- nail and bottle cap, fence post north of corner fence post, 63.10 feet NNW
- nail and bottle cap, east side power pole, 45.40 feet SW

In June 1983, the DNR Bureau of Engineering traversed to the area of the corner and found a 1 $\frac{1}{2}$ " by 8" iron pipe with $\frac{1}{2}$ " by 8" iron pipe inside down 0.1 of a foot over a 6" by 7" by 9" field stone down 13", nothing under stone. Stone was found to be 1' west of centerline north-south road and in line with fences east and west. Located and measured distances from this stone to the northeast and southeast corners of Section 28 distances being 2637.63 and 2642.09 respectively. Accepted the stone as the corner, left as found and replaced the iron pipes with a DNR Survey Marker. Stone is 7.32 feet east of a line between northeast and southeast section corners.

On September 22, 1987, the DNR Bureau of Engineering revisited the corner and found the DNR Survey Marker, as previously set, in good condition.