

# CERTIFICATE OF LOCATION OF GOVERNMENT CORNER

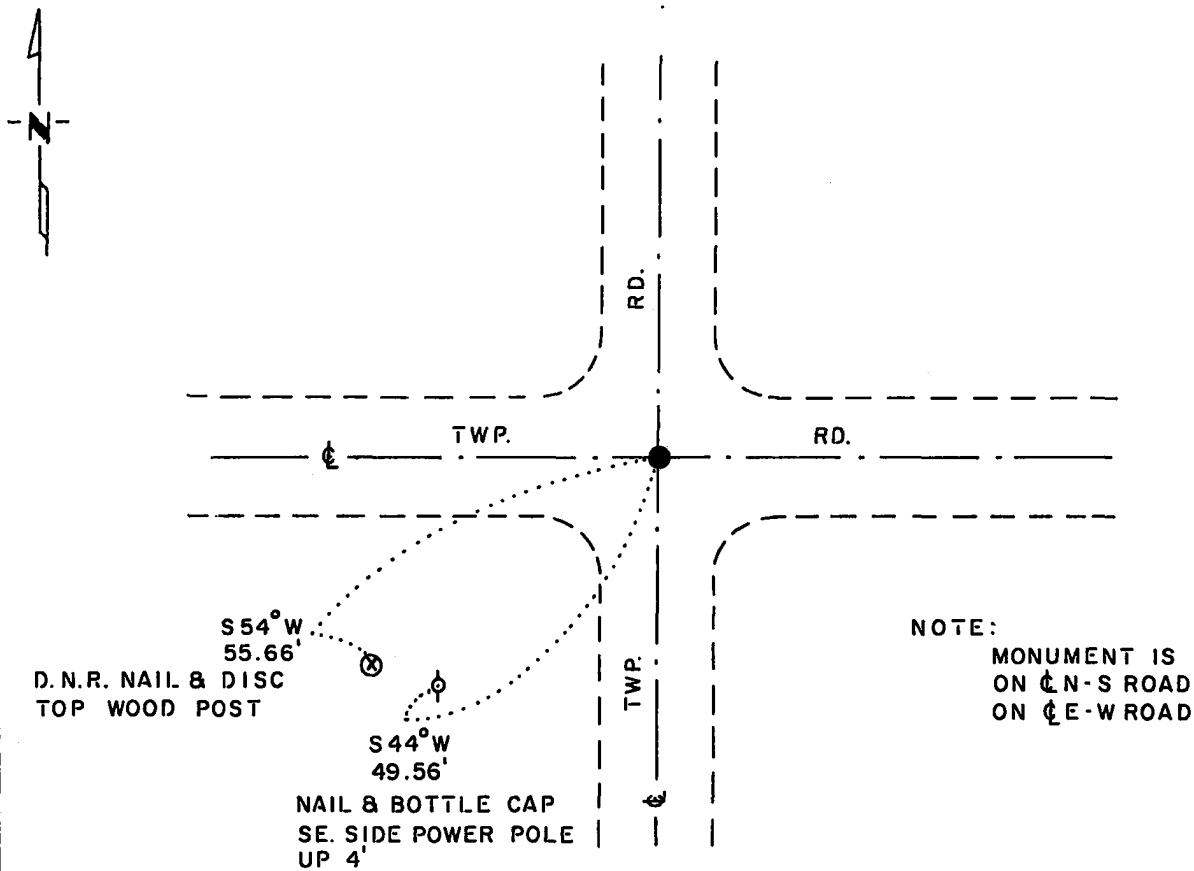
NORTHEAST Corner of Section 27, Township 115 N., Range 43 W., 5<sup>th</sup> P.M.

STATE OF MINNESOTA, County of YELLOW MEDICINE

At the corner location shown on the sketch:

- On 6-22-83 found a 7"x8"x10" FIELD STONE, DOWN 17" OVER A 4" x 6"  
DATE  
CUT GRANITE STONE, DOWN 27"
  - left monument as found,  lowered monument,  removed monument (explain)
- On 6-22-83 placed a 1 1/4" x 1 1/4" x 12" PERFORATED STEEL TUBE WITH  
DATE  
ALUMINUM CAP STAMPED "D. N. R. SURVEY MARKER" OVER STONE, DOWN 0.4"

### SKETCH OF REFERENCE TIES



NOTE:  
 MONUMENT IS  
 ON €-N-S ROAD  
 ON €-E-W ROAD

TIES VERIFIED 9-22-87  
 BEARINGS OBSERVED WITH COMPASS

Statement of evidence relative to this corner location is on back of page.

J. B. M. 7-29-83  
 G-985

I hereby certify that this document and the data contained herein was prepared by me or under my direct supervision.

Lowell R. Pomeroy 10-12-87  
SIGNATURE DATE

Registration No. 17005  
 Land Surveyor,  Professional Engineer  
 County Surveyor,  County Engineer

OFFICE OF THE COUNTY RECORDER  
 County of Yellow Medicine

I hereby certify that this document was filed in the Co. Recorders office at 10:15 A.M. on the 14 day of October A.D., 19 87

County Recorder Norman Godwin

By \_\_\_\_\_, Deputy

DOCUMENT NO. 191758

**RECORDED**  
**GRANTOR**  
**GRANTEE**  
**INDEXED**

Northeast Corner Section 27, Township 115 North, Range 43 West

This corner was originally established by the U.S. General Land Office survey in 1867. The government notes show corner marked with a wood post set in mound of earth with pits and trench dug around the mound.

In June 1983, the DNR Bureau of Engineering contacted the Yellow Medicine County Offices of the Recorder and Highway Engineer for corner information.

The following information was obtained from the County Recorder:

Surveyor's Record Book B, on Page 109, dated September 27, 1901, recorded by John Norgaard, County Surveyor, the following is written about the corner: "Found stake at the intersection of roads set by adjoining landowners in the government mound, when plain. Set top of monument level with ground." The monument referred to by Norgaard, according to the introductory page of Book B, is a jasper granite stone 2 feet long and 6" by 6" square.

On Page 210 of Survey Plat Book a survey of Section 26 is shown, dated 1929, by John Norgaard, County Surveyor. The following ties were taken to this corner:

Box Elder, SE 66.5 feet  
Telephone pole, NE 42.3 feet

No mention is made of the measurement itself.

The following information was obtained from the County Highway Engineer:

This corner was found in 1956 by D.C.N., no mention of a monument but the following ties are shown:

8" Box Elder, 65.8 feet SE  
Telephone Pole, 45.9 feet NE

In July 1958, the DNR Bureau of Engineering located this corner but does not indicate what was found or set. The 1956 ties are shown to this corner.

In August 1971, the DNR Bureau of Engineering went to the area of the corner and located the centerline of roads north-south and east-west. On August 26, 1971, the DNR Bureau of Engineering hired a backhoe operated by Dolan Johnson of Russell to dig for evidence of this corner. Dug at the corner area and found a stone down 1.2 feet. Set a 1" diameter iron pipe with a 1/2" diameter iron pipe inside over the stone and took the following ties:

nail and bottle cap, east side power pole, 49.75 feet SW  
nail and bottle cap, SE side telephone pole, 44.75 feet NE  
filed nick south end of C.M.C., 42.25 feet W.S.W.  
filed nick north end of C.M.C., 40.75 feet W.N.W.

Sketch of ties shows monument to be at approximate intersection of roads.

In June 1983, the DNR Bureau of Engineering traversed to the area of the corner and found a 1" by 6" iron pipe with a 1/2" by 6" iron pipe inside down 0.1 of a foot over a 7" by 8" by 10" field stone down 17" over a 4" by 6" cut granite stone down 27". Monuments were found to be at the intersection of centerlines of road north-south and east-west. Accepted granite stone as perpetuation of original government corner, left stones as found and replaced the iron pipes with a DNR Survey Marker.

On September 22, 1987, the DNR Bureau of Engineering revisited the corner and found the DNR Survey Marker, as previously set, in good condition.