

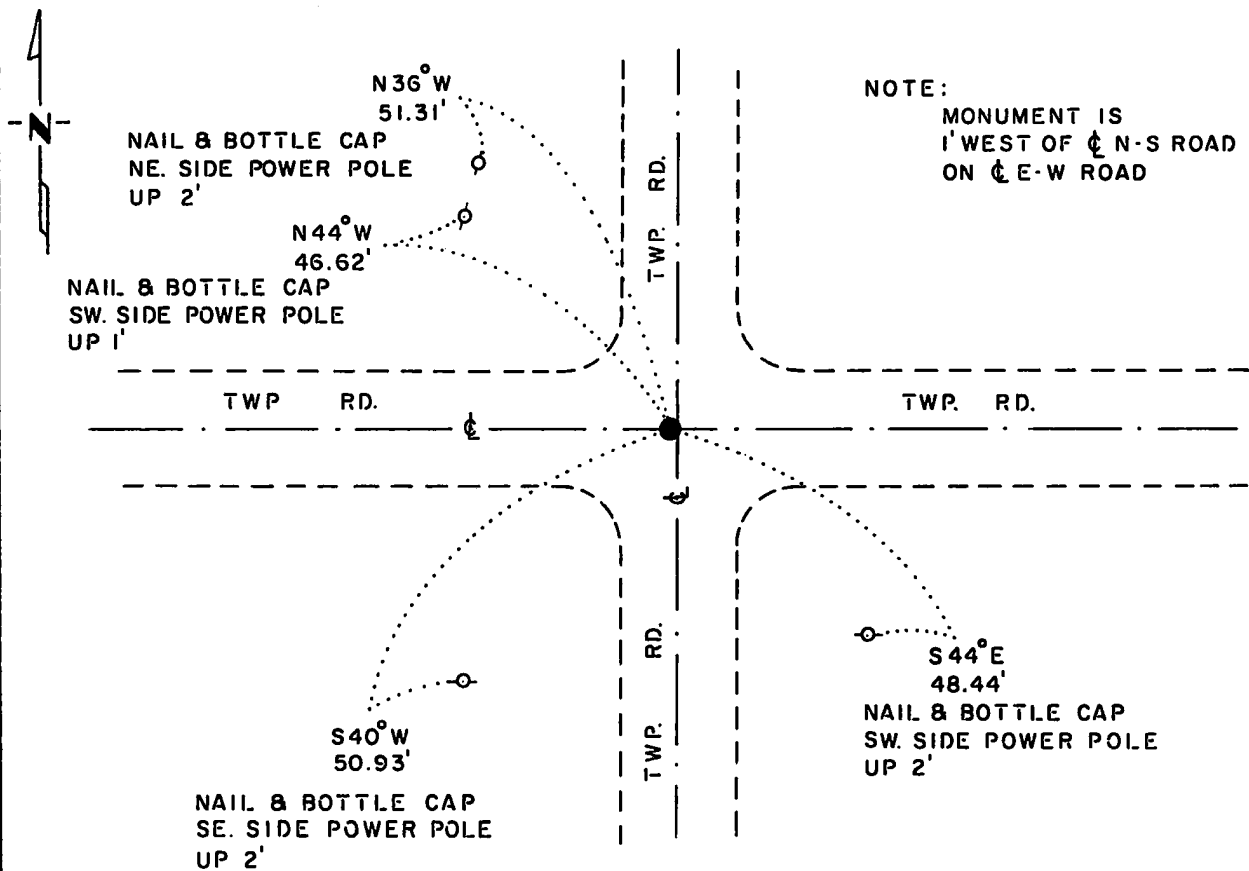
# CERTIFICATE OF LOCATION OF GOVERNMENT CORNER

NORTHEAST Corner of Section 33, Township 115 N., Range 43 W., 5th P.M.  
 STATE OF MINNESOTA, County of YELLOW MEDICINE

At the corner location shown on the sketch:

- On 6-22-83 found a 6"x6" CUT GRANITE STONE, DOWN 37"  
DATE
- left monument as found,  lowered monument,  removed monument (explain)
- On 6-22-83 placed a 1 1/4"x1 1/4"x15" PERFORATED STEEL TUBE WITH  
DATE  
ALUMINUM CAP STAMPED "D.N.R. SURVEY MARKER" OVER STONE, DOWN 0.4'

### SKETCH OF REFERENCE TIES



TIES VERIFIED 9-22-87  
 BEARINGS OBSERVED WITH COMPASS

Statement of evidence relative to this corner location is on back of page.

J.B.M. 7-29-83  
 G-985

I hereby certify that this document and the data contained herein was prepared by me or under my direct supervision.

*Lowell R. Pomeroy* 10-12-87  
SIGNATURE DATE

Registration No. 17005

- Land Surveyor,  Professional Engineer
- County Surveyor,  County Engineer

OFFICE OF THE COUNTY RECORDER  
 County of Yellow Medicine

RECORDED  
 GRANTOR ✓  
 GRANTEE ✓  
 INDEXED

I hereby certify that this document was filed in the Co. Recorders office at 10:25 A.M. on the 14 day of October A.D., 19 87

County Recorder *James J. Gosh*

By \_\_\_\_\_, Deputy

DOCUMENT NO. 191760

**Northeast Corner Section 33, Township 115 North, Range 43 West**

This corner was originally established by the U.S. General Land Office survey in 1867. The government notes show corner marked with a wood post set in mound of earth with pits and trench dug around the mound.

In June 1983, the DNR Bureau of Engineering contacted the Yellow Medicine County Offices of the Recorder and Highway Engineer for corner information.

The following information was obtained from the County Recorder:

Surveyor's Record Book B, Page 109, dated September 27, 1901, recorded by John Norgaard, County Surveyor, the following is written about the corner: "Found stake in the government mound. Set top of monument level with ground." The monument referred to by Norgaard, according to the introductory page of Book B, is a jasper granite stone 2 feet long and 6" by 6" square. A distance of 2642 feet is shown from the corner to the east quarter corner of Section 28.

On Page 210 of Survey Plat Book a survey of Section 26 is show, dated 1929, by John Norgaard, County Surveyor. The following ties were taken to this corner:

Cottonwood, Southwest, 47.4 feet  
fence corner 44.6 feet  
fence corner 45.0 feet

No mention is made of the monument itself.

The following information was obtained from the County Engineer:

The following ties were taken in 1940 to the corner:

5th fence post ENE 94.8 feet  
4th fence post ESE 81.2 feet  
2nd fence post SE 54.9 feet  
Power Pole SW 52.2 feet

No mention is made as to what is in place at the corner.

In July 1958, the DNR Bureau of Engineering traversed to the area of the corner and located the intersection of roads north-south and east-west, set a spike at this intersection and took the following ties:

power pole SE 47.4 feet  
corner fence post NE 45.5 feet  
power pole NW 51.1 feet

A distance of 2638.9 feet is shown from this spike to a spike at the east quarter corner of Section 28.

In March 1964, the DNR Bureau of Engineering traversed to the area of the corner and located the spike set in 1958 and replaced it with a railroad spike.

In September 1971, the DNR Bureau of Engineering went to the area of the corner and located the centerlines of roads north-south and east-west. On September 1, 1971, the DNR Bureau of Engineering hired a backhoe operated by Dolan Johnson of Russell to dig for evidence of this corner. Dug at the corner area and found a stone down 2.0 feet with a wood hub beside it. Set a ½" diameter iron pipe over stone and took these ties:

nail and bottle cap West side power pole, 48.30 feet SE  
nail and bottle cap East side power pole, 50.90 feet SW  
nail and bottle cap South side power pole, 46.60 feet NW

Sketch of the ties shows corner to be at approximate intersection of previously mentioned roads.

In June 1983, the DNR Bureau of Engineering traversed to the area of the corner and found a ½" by 20" iron pipe down 2" over a 6" by 6" by 7" field stone down 20" over a 5" by 8" by 10" field stone down 27" over a 6" by 6" cut granite stone down 37". Monuments are 1 foot west of centerline north-south road and on centerline of east-west road. Measured a distance of 2642.09 feet from these monuments to the east quarter corner Section 28. Accepted the 6" x 6" granite stone as the corner, reset all stones in position found and replaced iron pipe with DNR Survey Marker.

On September 22, 1987, the DNR Bureau of Engineering revisited the corner and found the DNR Survey Marker, as previously set, in good condition.