

CERTIFICATE OF LOCATION OF GOVERNMENT CORNER

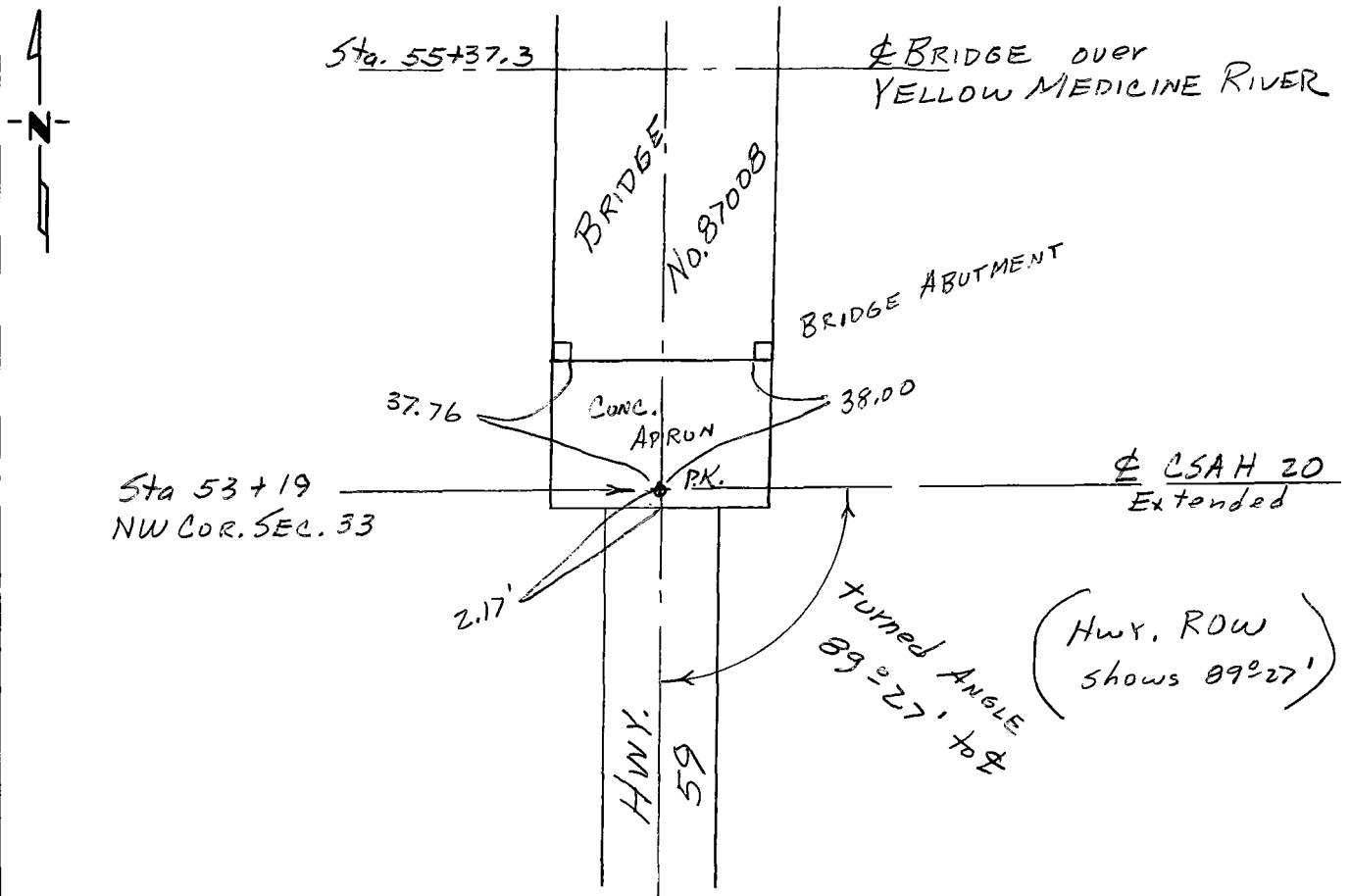
Northwest _____ Corner of Section 33, Township 114, Range 41, 5th P.M.

STATE OF MINNESOTA, County of Yellow Medicine

At the corner location shown on the sketch:

- On 4 Mar. 1988 found a no monument in place
DATE
- left monument as found, lowered monument, removed monument (explain)
- On 4 Mar. 1988 placed a PK nail at location for corner as shown
DATE on MN Hwy. 59 R/W map.

SKETCH OF REFERENCE TIES



Statement of evidence relative to this corner location is on back of page.

I hereby certify that this document and the data contained herein was prepared by me or under my direct supervision.

Sever J. Videna 8 March 1988
SIGNATURE DATE

Registration No. 12237

- Land Surveyor, Professional Engineer
- County Surveyor, County Engineer

OFFICE OF THE REGISTER OF DEEDS
 County of Yellow Medicine

I hereby certify that this document was filed in the Reg. of Deeds office at 9:45 A.M. on the 9 day of March A.D., 1988

Register of Deeds Norman J. Opdahl COUNTY RECORDER

By *Kay Nordahl*, Deputy

DOCUMENT NO. 192698

| |
|----------|
| RECORDED |
| GRANTED |
| GRANTEE |
| INDEXED |

Statement of Evidence:

KBM, Inc

Box 376

Redwood Falls

NC/10