

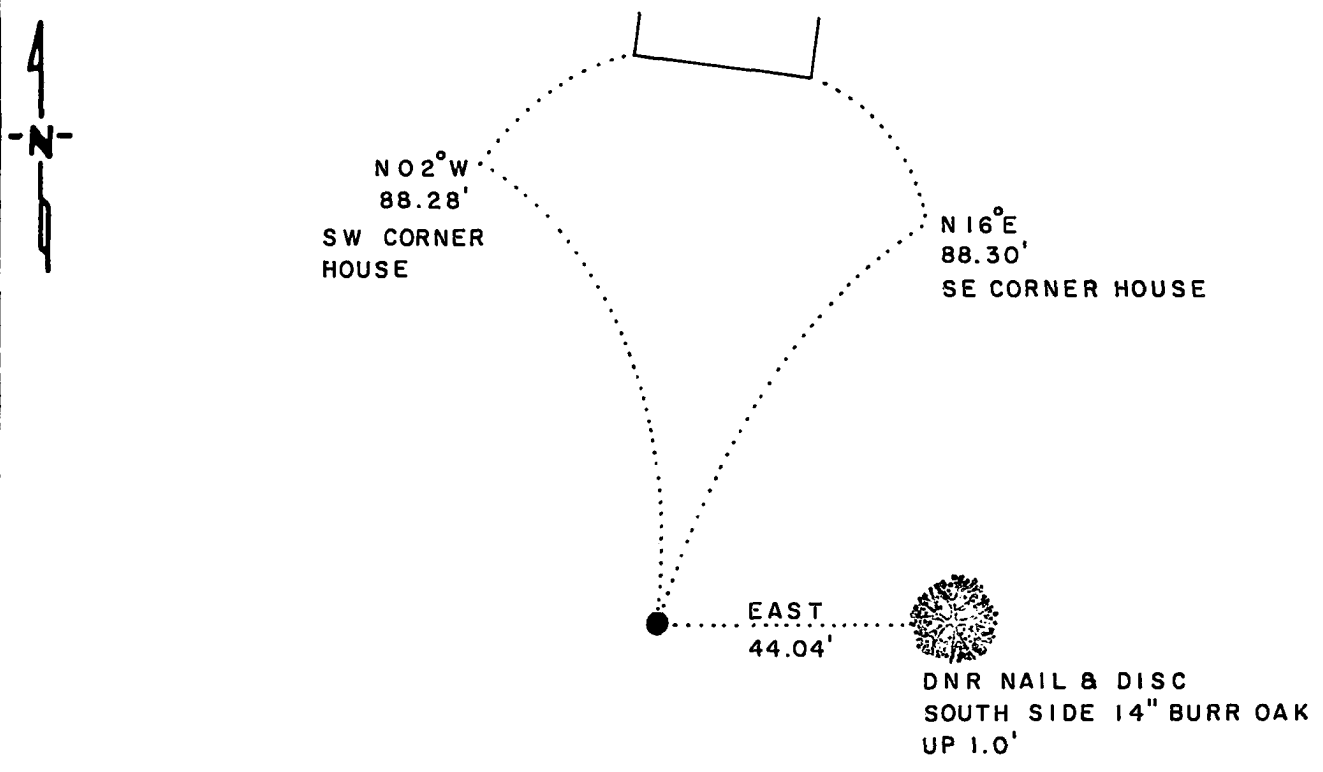
CERTIFICATE OF LOCATION OF GOVERNMENT CORNER

NORTH QUARTER Corner of Section 15, Township 115 N., Range 39 W., 5th P.M.
STATE OF MINNESOTA, County of YELLOW MEDICINE

At the corner location shown on the sketch:

- On 3-1-88 found a MINNESOTA HIGHWAY DEPARTMENT CAST IRON
MONUMENT, FLUSH
 left monument as found, lowered monument, removed monument (explain)
- On _____ placed a _____

SKETCH OF REFERENCE TIES



MINNESOTA STATE
PLANE COORDINATES
SOUTH ZONE
X = 1,601,836.60
Y = 650,873.31

BEARINGS OBSERVED WITH COMPASS

Statement of evidence relative to this corner location is on back of page

J.B.M. 4-13-88
A-32

RECORDED
GRANTOR ✓
GRANTEE ✓
INDEXED ✓

I hereby certify that this document and the data contained herein was prepared by me or under my direct supervision.

Lowell B. Pommeroy 4-19-88
SIGNATURE DATE

Registration No. 17005
 Land Surveyor, Professional Engineer
 County Surveyor, County Engineer

OFFICE OF THE COUNTY RECORDER
County of Yellow Medicine

I hereby certify that this document was filed in the Co. Recorders office at 10:00 A.M. on the 20 day of April A.D., 19 88

County Recorder Norman J. Opdahl

By Kay Nordahl, Deputy

DOCUMENT NO. 192966

The DNR Bureau of Engineering contacted the following offices for survey information on this corner:

Secretary of State
Yellow Medicine County Auditor, Highway Engineer and Recorder
Byron Dahle, Land Surveyor at Willmar
Dale Boklep, RLS at Willmar
Boe Land Surveying at Willmar
Mn/DOT Office in Willmar
KBM Surveying at Redwood Falls

- 1864 U.S. General Land Office notes in the Secretary of State's Office show the corner marked with a wood post and recorded the following bearing trees:
15" White Oak, N. 20° E., 20 links
13" White Oak, South, 26 links
- 1874 Surveyor's Record Book, from the County Recorder's Office, on page 6, contains a survey by O. Quam. On February 11, the corner is shown as a quarter post.
- 1895 Surveyor's Record Book, from the County Recorder's Office, on page 113, contains a survey by Jonah Peterman, County Surveyor. Survey shows this corner as a quarter post found. Corner measures:
42.00 chains (2772.00 ft.) from the northwest corner Section 15
82.90 chains (5471.40 ft.) from the south quarter corner Section 15
- 1896 Surveyor's Record Book, from the County Recorder's Office, on page 100, contains a survey by Jonah Peterman, County Surveyor. Survey shows a post at this corner with two witness trees standing. Corner is shown 42.00 chains from the northwest corner of Section 15.
- 1912 Surveyor's Record Book, from the County Recorder's Office, on page 266, contains a survey by John Norgaard, County Surveyor. Norgaard states he found a stone set by himself several years ago which agrees with the stumps of the government bearing trees. Norgaard records this same information on page 229 of the Surveyor's Record Book.
- 1914 Surveyor's Record Book, from the County Recorder's Office, on page 322, contains a survey by John Norgaard, County Surveyor. Survey shows the corner to be a stone set where government stake used to stand. Corner is shown to measure:
2772 ft. from the center of Section 15
5472 ft. from the south quarter corner of Section 15
- 1918 Surveyor's Record Book, from the County Recorder's Office, on page 407 contains a survey by John Norgaard, County Surveyor. Survey shows a distance of 2802 ft. from this corner to the northwest corner Section 15.
- 1918 Surveyor's Record Book, from the County Recorder's Office, on page 415
1926 contain surveys by John Norgaard, County Surveyor. Surveys show this
1929 corner as the north quarter post.
- No Two right-of-way maps for Minnesota Trunk Highway 67, obtained from Mn/DOT,
Date contain the following information about this corner. One states monument in place, the other states found stone.
- 1962 The DNR Bureau of Engineering shows an iron marker in place at this corner.

- 1968 April 15, a certificate of location of government corner, obtained from the County Recorder's Office, signed by Arbie E. Nelson, RLS #1483, shows the corner was evidenced by a stone monument 9" below surface of ground found by the highway department. Left monument as found and took three reference ties.
- 1970's A section subdivision worksheet of Section 15, obtained from Mn/DOT, shows this corner measures:
2770.676 ft. from the northeast corner Section 16
2704.553 ft. from the center of Section 15
5405.841 ft. from the south quarter corner Section 15
- 1974 April 16, a certificate of location of government corner obtained from the County Recorder's Office, signed by Jesse E. Fant, RLS #3230, shows on October 12, 1971, an 8" by 8" by 24" stone was found down 1.0 ft. On May 24, 1973, a Minnesota Highway Department cast iron monument was placed over the stone.
- 1979 October, the Bureau of Land Management did a dependent resurvey of a portion of Township 115 North, Range 39 West, survey conducted by Stephen D. Douglas, Cadastral Surveyor. Survey shows the corner is a 6" by 6" granite stone firmly set 12" below the ground with a cast iron post 3½" inside diameter set alongside. Corner is shown to measure:
41.97 chains (2770.02 ft.) from the northeast corner Section 16
41.93 chains (2767.38 ft.) from the center of Section 15
81.90 chains (5405.40 ft.) from the south quarter corner Section 15
- 1988 March 1, the DNR Bureau of Engineering conducted a search for this corner and found a Minnesota Highway Department cast iron monument over a stone. Searched for and found record ties as shown.

Analysis of the available information led the DNR Bureau of Engineering to conclude that the found cast iron monument marks the location of the corner. As was stated in the BLM dependent resurvey, no original evidence was found, therefore, none was searched for at this time.