

# CERTIFICATE OF LOCATION OF GOVERNMENT CORNER

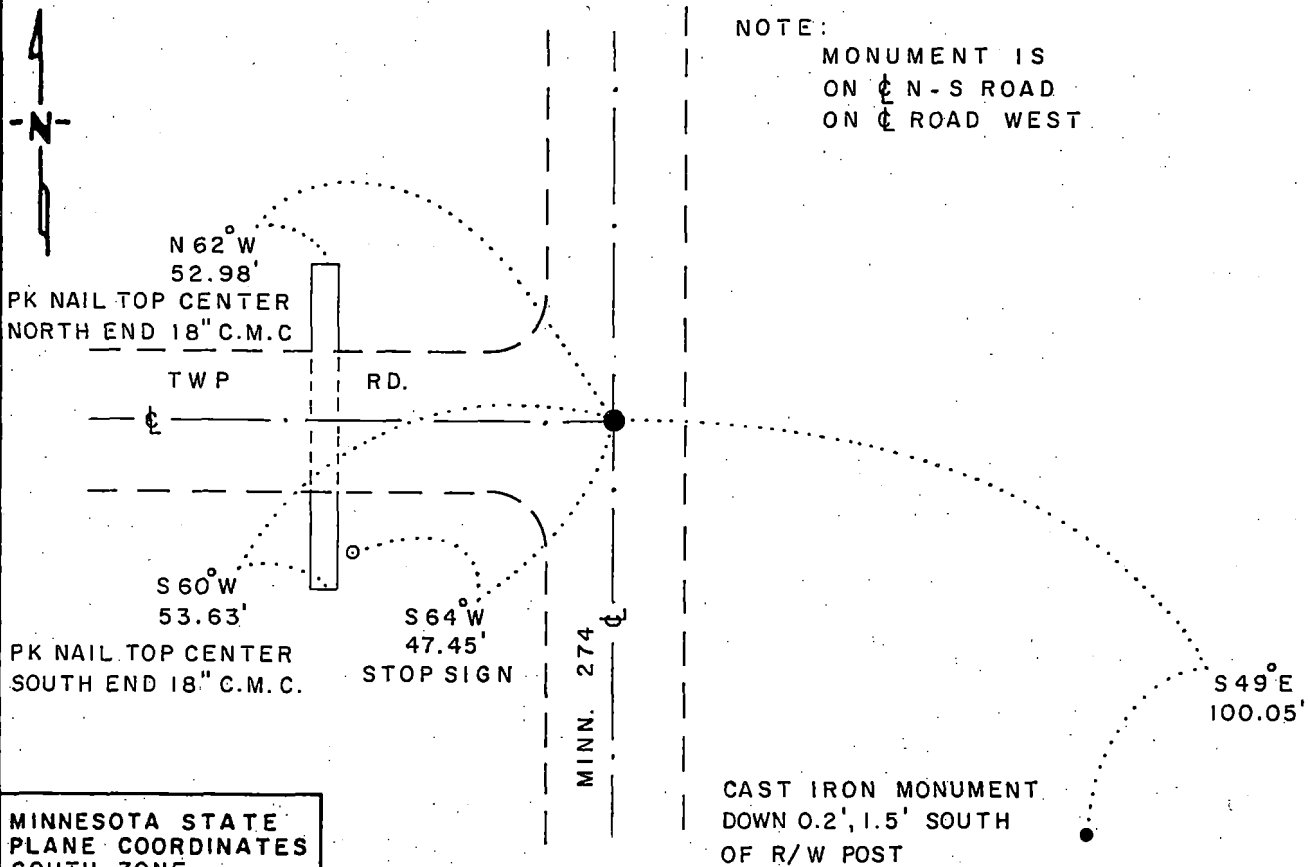
NORTHEAST Corner of Section 21, Township 115 N., Range 39 W., 5th P.M.

STATE OF MINNESOTA, County of YELLOW MEDICINE

At the corner location shown on the sketch:

- On 3-1-88 found a MINNESOTA HIGHWAY DEPARTMENT CAST IRON MONUMENT, DOWN 0.3'
  - left monument as found,  lowered monument,  removed monument (explain)
- On \_\_\_\_\_ placed a \_\_\_\_\_

### SKETCH OF REFERENCE TIES



MINNESOTA STATE  
PLANE COORDINATES  
SOUTH ZONE  
X = 1,599,002.62  
Y = 645,597.79

BEARINGS OBSERVED WITH COMPASS

Statement of evidence relative to this corner location is on back of page

J.B.M. 4-13-88  
A-32

RECORDED  
GRANTOR ✓  
GRANTEE ✓  
INDEXED

I hereby certify that this document and the data contained herein was prepared by me or under my direct supervision.

Lowell R. Pommeroy P. 4-19-88  
SIGNATURE DATE

Registration No. 17005

- Land Surveyor,  Professional Engineer
- County Surveyor,  County Engineer

OFFICE OF THE COUNTY RECORDER  
County of Yellow Medicine

I hereby certify that this document was filed in the Co. Recorders office at 10:05 A.M. on the 20 day of April A.D., 19 88

County Recorder Norman J. Opdahl

By Kay Nordahl, Deputy

DOCUMENT NO. 192967

Northeast Corner Section 21, Township 115 North, Range 39 West

The DNR Bureau of Engineering contacted the following offices for survey information on this corner:

Secretary of State  
Yellow Medicine County Auditor, Highway Engineer and Recorder  
Byron Dahle, Land Surveyor at Willmar  
Dale Boklep, RLS at Willmar  
Boe Land Surveying at Willmar  
Mn/DOT Office in Willmar  
KBM Surveying at Redwood Falls

- 1864 U.S. General Land Office notes in the Secretary of State's Office show the corner marked with a wood post set in a mound with pits.
- 1901 Surveyor's Record Book B, from the County Recorder's Office on page 76, contains a collection of what was found at government section corners by John Norgaard, County Surveyor, in a township re-monumentation survey. Norgaard states "found stone in the center of road running north and south set by adjoining landowner in the government mound when the corner were plain". A 6" by 6" by 24" jasper granite stone was set at this location, top of monument level with ground.
- 1914 Surveyor's Record Book, from the County Recorder's Office, on page 322, contains a survey by John Norgaard, County Surveyor. Survey shows this corner measures:  
2634 ft. from the north quarter corner Section 22  
2656 ft. from the east quarter corner Section 16  
On Page 338 of this record book, Norgaard states he found this corner and took ties:  
telephone pole, NW, 52.3 ft.  
18" Boxelder, SW, 52.4 ft.
- 1965 A tie sheet of various section corners, obtained from the County Highway Engineer's Office, shows a monument in place down 6". Five reference ties are shown for this corner.
- 1968 January 18, a certificate of location of government corner, obtained from the County Recorder's Office, signed by Arbie E. Nelson, RLS #1483, shows the corner was evidenced by its location in the center of an east-west road and intersection of tangents to north-south road. A state highway department 20" by 6" by 4" cast iron monument was set at this location down 6". Three reference ties are shown.
- 1970 Two right-of-way maps for Minnesota Trunk Highway 274, obtain from Mn/DOT, contain the following information. One map shows this corner was established by Arbie E. Nelson on 1/18/68, being a cast iron monument, down 6". The other map shows a cast iron monument at the corner which measures 2638.471 ft. from the east quarter corner Section 16.
- 1970's A section subdivision worksheet of Section 15, obtained from Mn/DOT, shows this corner measures:  
2633.762 ft. from the north quarter corner Section 22  
5318.243 ft. from the northeast corner Section 22  
2638.471 ft. from the east quarter corner Section 16
- 1974 April 9, a certificate of location of government corner, obtained from the County Recorder's Office, signed by Jesse E. Fant, RLS #3230, show a Minnesota Highway Department cast iron monument was found on December 16, 1970. Monument is 20" by 6" by 4", 2" below road surface, left as found.
- 1979 October, the Bureau of Land Management did a dependent resurvey of a portion of Township 115 North, Range 39 West, survey conducted by Stephen D. Douglas, Cadastral Surveyor. Survey shows a Minnesota Highway Department cast iron monument firmly in place 2" below road surface, roads north-south and west. Accepted this monument as the location of the corner. Corner is shown to measure:  
39.79 chains (2626.14 ft.) from the north quarter corner Section 22  
80.55 chains (5316.30 ft.) from the northeast corner Section 22  
79.94 chains (5276.04 ft.) from the northeast corner Section 16
- 1988 March 1, the DNR Bureau of Engineering conducted a search for this corner and found a Minnesota Highway Department cast iron monument, down 0.3 ft., at intersection of roads north-south and west. Searched for and found a record tie as shown.

Analysis of the available information led the DNR Bureau of Engineering to conclude that the found cast iron monument marks the location of the corner. As was stated in the BLM dependent resurvey, no original evidence was found, therefore, none was searched for at this time.