

# CERTIFICATE OF LOCATION OF GOVERNMENT CORNER

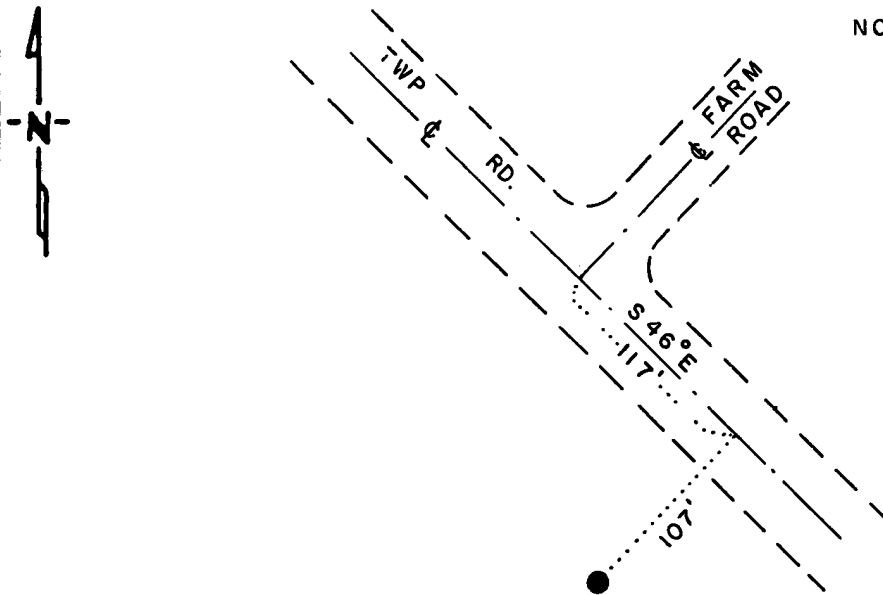
NORTHEAST Corner of Section 22, Township 115 N., Range 39 W., 5<sup>th</sup> P.M.

STATE OF MINNESOTA, County of YELLOW MEDICINE

At the corner location shown on the sketch:

- On 3-1-88 found a 3 1/4" DIAMETER ALUMINUM BLM MARKER  
DATE
- left monument as found,  lowered monument,  removed monument (explain)
- On \_\_\_\_\_ placed a \_\_\_\_\_  
DATE

### SKETCH OF REFERENCE TIES



NOTE:

MONUMENT IS NEXT TO A 7"x7" GRANITE MONUMENT WITH DRILL DEPRESSION NEXT TO A 1/4" STEEL ROD UP 4.8'

GOOD TIES NOT AVAILABLE

MINNESOTA STATE  
 PLANE COORDINATES  
 SOUTH ZONE  
 X = 1,604,314.20  
 Y = 645,343.70

### BEARINGS OBSERVED WITH COMPASS

Statement of evidence relative to this corner location is on back of page

J.B.M. 4-13-88  
 A-32

**RECORDED**  
 GRANTOR ✓  
 GRANTEE ✓  
**INDEXED**

I hereby certify that this document and the data contained herein was prepared by me or under my direct supervision.

Louell R. Pomeroy Jr. 4-19-88  
SIGNATURE DATE

Registration No. 17005

- Land Surveyor,  Professional Engineer
- County Surveyor,  County Engineer

OFFICE OF THE COUNTY RECORDER  
 County of Yellow Medicine

I hereby certify that this document was filed in the Co. Recorders office at 10:10 A.M. on the 20 day of April A.D., 19 88

County Recorder Norman J. Opdahl

By Kay Nordahl, Deputy

DOCUMENT NO. 192968

Northeast Corner Section 22, Township 115 North, Range 39 West

The DNR Bureau of Engineering contacted the following offices for survey information on this corner:

Secretary of State  
Yellow Medicine County Auditor, Highway Engineer and Recorder  
Byron Dahle, Land Surveyor at Willmar  
Dale Boklep, RLS at Willmar  
Boe Land Surveying at Willmar  
Mn/DOT Office in Willmar  
KBM Surveying at Redwood Falls

- 1864 U.S. General Land Office notes in the Secretary of State's Office show the corner marked with a wood post set in a mound with pits.
- 1885 Surveyor's Record Book, from the County Recorder's Office, on page 85,  
1892 contains surveys by George E. Olds, County Surveyor, and Jonah Peterman, County Surveyor. Surveys show the corner in place, possibly a stone, which measures 42.04 chains from the south quarter corner Section 14.
- 1901 Surveyor's Record Book B, from the County Recorder's Office on page 76, contains a collection of what was found at government section corners by John Norgaard, County Surveyor, in a township re-monumentation survey. Norgaard states "found stone in mound as has been used by me and other surveyor's in the subdivision of adjoining sections." A 6" by 6" by 24" jasper granite stone was set at this location, top of monument level with ground.
- 1913 Surveyor's Record Book, from the County Recorder's Office, on page 292, contains a survey by John Norgaard, County Surveyor. Norgaard states he found the jasper stone monument as set by himself in the county re-monumentation survey.
- 1914 Surveyor's Record Book, from the County Recorder's Office, on page 322, contains a survey by John Norgaard, County Surveyor. Survey shows this corner measures:  
2694 ft. from the north quarter corner Section 22  
2658 ft. from the east quarter corner Section 15
- 1938 Surveyor's Record Book, from the County Recorder's Office, on page 85, contains a survey by John Norgaard, County Surveyor. Survey shows a jasper monument at the corner, the top 8" over ground.
- No A right-of-way map for Minnesota Trunk Highway 67, obtained from Mn/DOT,  
Date shows a field stone at this corner.
- 1970's A section subdivision worksheet of Section 15, obtained from Mn/DOT, shows this corner measures:  
2684.481 ft. from the north quarter corner Section 22  
5318.243 ft. from the northeast corner Section 21
- 1979 October 5, a certificate of location of government corner, obtained from the County Recorder's Office, signed by Robert C. Jones, RLS #11864, shows on July 10, 1974, a 6" by 6" by 24" granite monument was found at ground surface. A small depression was drilled in its top center.
- 1979 October, the Bureau of Land Management did a dependent resurvey of a portion of Township 115 North, Range 39 West, survey conducted by Stephen D. Douglas, Cadastral Surveyor. Survey shows a 6" by 6" granite stone, projecting 12", was found at the corner, and accepted as marking it. At the corner point set an aluminum post, 30" long, 2½" inside diameter, 18" in the ground with a marked cap showing sections, township and range and the year 1979. The stone was buried alongside the post. Corner is shown to measure:  
40.76 chains (2690.16 ft.) from the north quarter corner Section 22  
80.55 chains (5316.30 ft.) from the northeast corner Section 21
- 1988 March 1, the DNR Bureau of Engineering conducted a search for this corner and found a 7" by 7" granite monument with a shallow drill depression in its center. A BLM aluminum marker is 0.40 ft. east and 0.15 ft. north of the depression. A 1/4" steel rod, up 4.8 ft., is next to the granite stone.

Analysis of the available information led the DNR Bureau of Engineering to conclude that the aluminum BLM monument marks the location of the corner, as stated in their field notes. It is the BLM's practice to set their monument at the true position of the corner and place the existing monument at its side. As was stated in the BLM dependent resurvey, no original evidence was found, therefore, none was searched for at this time.