

CERTIFICATE OF LOCATION OF GOVERNMENT CORNER

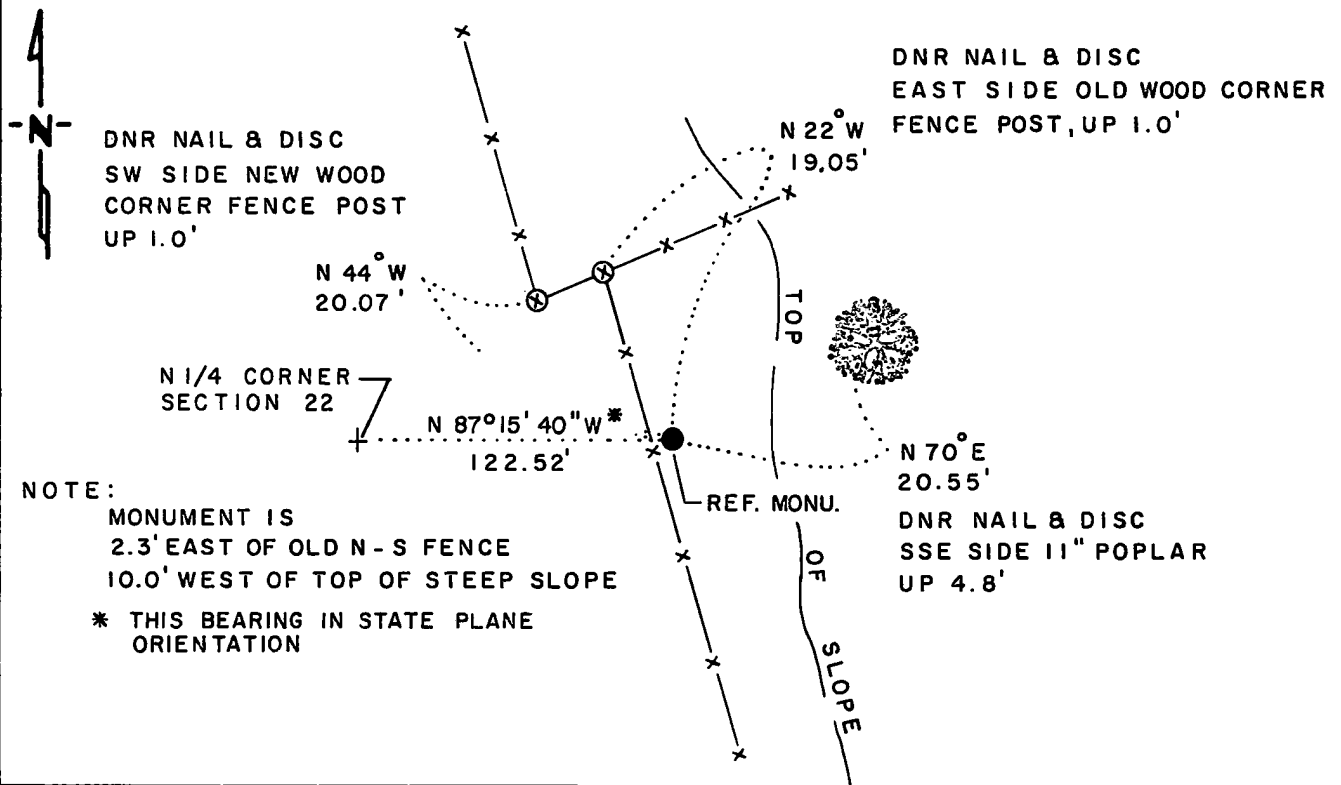
NORTH QUARTER Corner of Section 22, Township 115 N., Range 39 W., 5th P.M.

STATE OF MINNESOTA, County of YELLOW MEDICINE

At the corner location shown on the sketch:

- On _____ found a _____
DATE
- left monument as found, lowered monument, removed monument (explain)
- On 3-14-88 placed a 1 1/4" x 1 1/4" x 20" PERFORATED STEEL TUBE WITH
DATE
ALUMINUM CAP STAMPED "DNR SURVEY MARKER", UP 0.3'

SKETCH OF REFERENCE TIES



NOTE:
 MONUMENT IS
 2.3' EAST OF OLD N - S FENCE
 10.0' WEST OF TOP OF STEEP SLOPE
 * THIS BEARING IN STATE PLANE
 ORIENTATION

MINNESOTA STATE PLANE COORDINATES SOUTH ZONE	
N1/4 CORNER	REF. MONUMENT
X = 1,601,626.43	X = 1,601,504.06
Y = 645,472.27	Y = 645,478.12

BEARINGS OBSERVED WITH COMPASS

Statement of evidence relative to this corner location is on back of page.

J.B.M. 4-15-88
A-32

I hereby certify that this document and the data contained herein was prepared by me or under my direct supervision.

Lowell R. Pommeroy Jr. 4-19-88
SIGNATURE DATE

Registration No. 17005

- Land Surveyor, Professional Engineer
 County Surveyor, County Engineer

OFFICE OF THE COUNTY RECORDER
 County of Yellow Medicine

RECORDED
 GRANTOR ✓
 GRANTEE ✓
 INDEXED ✓

I hereby certify that this document was filed in the Co. Recorders office at 10:15 A.M. on the 20 day of April A.D., 19 88

County Recorder Norman J. Opdahl

By Key Nordahl, Deputy

DOCUMENT NO. 192969

North Quarter Corner Section 22, Township 115 North, Range 39 West

The DNR Bureau of Engineering contacted the following offices for survey information on this corner:

Secretary of State
Yellow Medicine County Auditor, Highway Engineer and Recorder
Byron Dahle, Land Surveyor at Willmar
Dale Boglep, RLS at Willmar
Boe Land Surveying at Willmar
Mn/DOT Office in Willmar
KBM Surveying at Redwood Falls

1864 U.S. General Land Office notes in the Secretary of State's Office show the corner marked with a wood post and recorded the following bearing trees:
16" Cottonwood, South, 20 links

1895 Surveyor's Record Book, from the County Recorder's Office, on page 113, contains a survey by Jonah Peterman, County Surveyor. Survey shows this corner in or near a creek. Survey commenced at this corner which is shown to measure:

41.00 chains (2706.0 ft.) from the center of Section 15
82.90 chains (5471.40 ft.) from the north quarter corner Section 15

1914 Surveyor's Record Book, from the County Recorder's Office, on page 322, contains a survey by John Norgaard, County Surveyor. Survey shows this corner measures:

2700 ft. from the center of Section 15
5472 ft. from the north quarter corner Section 15
2694 ft. from the northeast corner Section 22
2634 ft. from the northeast corner Section 21

No mention of a monument is made.

1970's A section subdivision worksheet of Section 15, obtained from Mn/DOT, shows this corner measures:

2633.762 ft. from the northeast corner Section 21
2684.481 ft. from the northeast corner Section 22
2701.288 ft. from the center of Section 15
5405.841 ft. from the north quarter corner Section 15

1979 October, the Bureau of Land Management did a dependent resurvey of a portion of Township 115 North, Range 39 West, survey conducted by Stephen D. Douglas, Cadastral Surveyor. Survey shows a point for this corner was determined longitudinally by old fence lines north and south and latitudinally on line between adjoining section corners. This position was not monumented, but is shown to measure:

40.76 chains (2690.16 ft.) from the northeast corner Section 22
39.79 chains (2626.14 ft.) from the northeast corner Section 21
39.97 chains (2638.02 ft.) from the center of Section 15
81.90 chains (5405.40 ft.) from the north quarter corner Section 15

1988 March 1, the DNR Bureau of Engineering conducted a search for this corner and found the corner area to fall in Hazel Creek. Computed a position for this corner based on the BLM survey and found it to measure:

2627.10 ft. from the northeast corner Section 21
2691.14 ft. from the northeast corner Section 22

Analysis of the available information led the DNR Bureau of Engineering to conclude that the position computed from the BLM resurvey marks the location of the corner. As was stated in the BLM dependent resurvey, no original evidence was found, therefore, none was searched for at this time.