

CERTIFICATE OF LOCATION OF GOVERNMENT CORNER

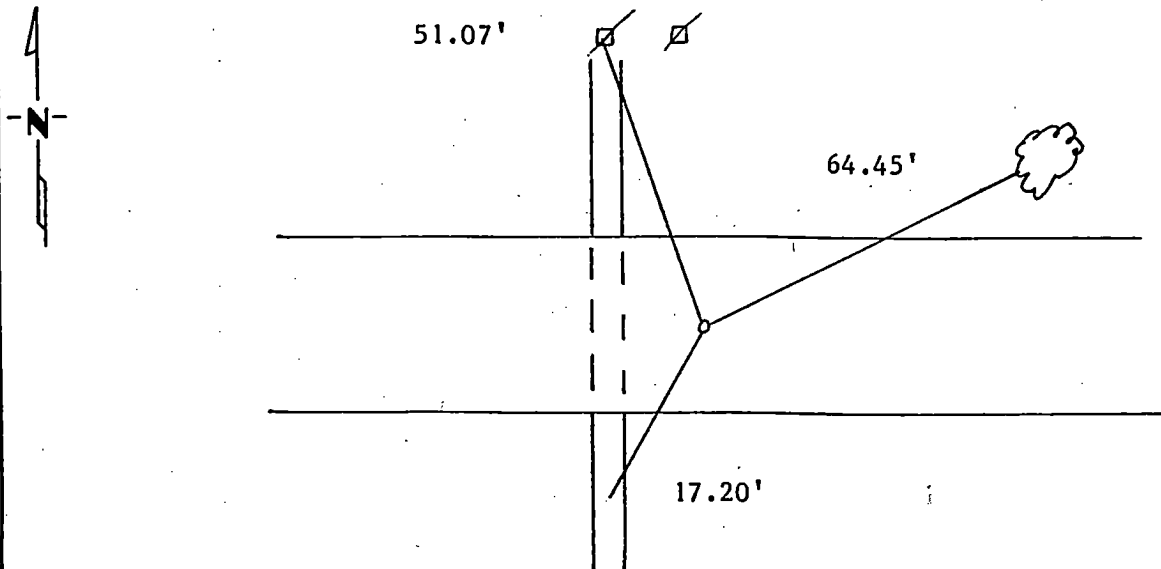
North Quarter _____ Corner of Section 25, Township 115N, Range 46W, 5th P.M.

STATE OF MINNESOTA, County of Yellow Medicine

At the corner location shown on the sketch:

- On _____ found a _____
DATE
- left monument as found, lowered monument, removed monument (explain)
- On 8/18/88 placed a Set a 1/4 Iron pipe midway and on line as indicated
DATE by John Norgaard in 4/26/1901.

SKETCH OF REFERENCE TIES



Nail and Seal in Power Pole 51.07' N
 Nail and Seal in 30" Cottonwood tree 64.45' NE
 PK Nail in 12" CMP 17.20' S

Statement of evidence relative to this corner location is on back of page.

I hereby certify that this document and the data contained herein was prepared by me or under my direct supervision.

Lytle C. Mooney 8/26/1988
 SIGNATURE DATE

Registration No. 11943
 Land Surveyor, Professional Engineer
 County Surveyor, County Engineer

OFFICE OF THE COUNTY RECORDER
 County of Yellow Medicine

I hereby certify that this document was filed in the Co. Recorders office at 3:00 P.M. on the 27 day of September A.D., 19 88

County Recorder Norman J. Opdahl
 By Kay Nordahl, Deputy

DOCUMENT NO. 193900

Statement of Evidence:

Did not dig as culvert was put in line.