

CERTIFICATE OF LOCATION OF GOVERNMENT CORNER

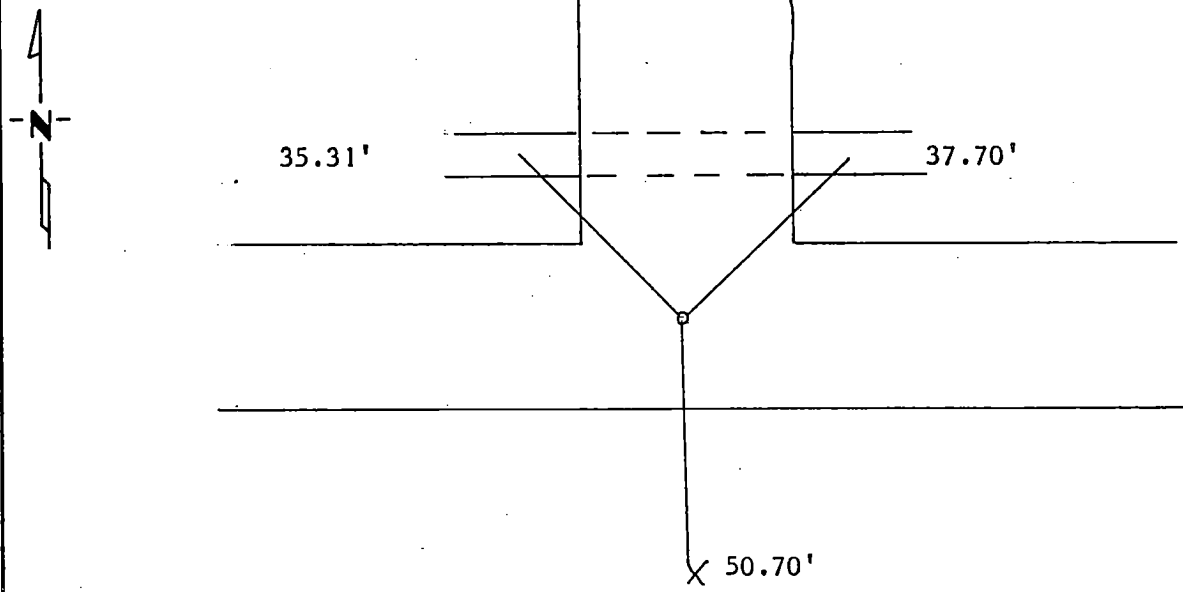
Northeast _____ Corner of Section 25, Township 115N, Range 46W, 5th P.M.

STATE OF MINNESOTA, County of Yellow Medicine

At the corner location shown on the sketch:

- On 8/18/88 found a Found large field stone 6" below road surface with spike on top of it.
DATE
- left monument as found, lowered monument, removed monument (explain)
- On 8/18/88 placed a set pipe and bolt along side for future location.
DATE

SKETCH OF REFERENCE TIES



PK Nail 12" CMP NW 35.31'
 PK Nail 12" CMP NE 37.70'
 Nail and Seal Wooden Post S 50.70'

Statement of evidence relative to this corner location is on back of page.

I hereby certify that this document and the data contained herein was prepared by me or under my direct supervision.

Spyle E. Moezy 8/25/88
SIGNATURE DATE

Registration No. 11943

Land Surveyor, Professional Engineer

County Surveyor, County Engineer

OFFICE OF THE COUNTY RECORDER
 County of Yellow Medicine

I hereby certify that this document was filed in the Co. Recorders office at 3:05 P.M. on the 27 day of September A.D., 19 88

County Recorder Norman J. Opdahl

By Kay Nordahl, Deputy

DOCUMENT NO. 193901

Statement of Evidence: