

# CERTIFICATE OF LOCATION OF GOVERNMENT CORNER

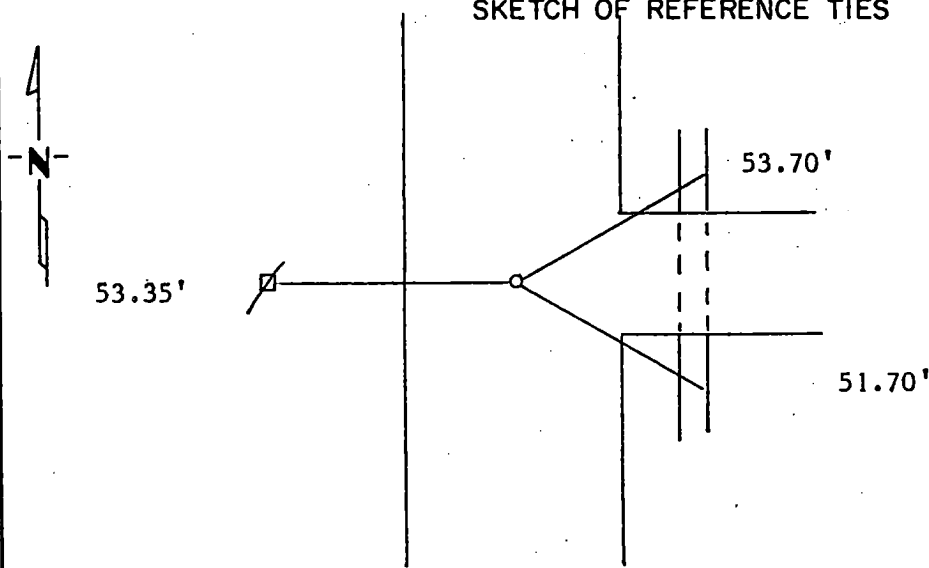
East Quarter Corner of Section 26, Township 115N, Range 46 W, 5th P.M.

STATE OF MINNESOTA, County of Yellow Medicine

At the corner location shown on the sketch:

- On 8/18/88 found a \_\_\_\_\_  
DATE
- left monument as found,  lowered monument,  removed monument (explain)
- On 8/18/88 placed a 5/8" rerod w/seal  
DATE

SKETCH OF REFERENCE TIES



Nail and Seal	Power Pole	53.35'	W
PK Nail in 12" CMP		53.70'	NE
PK Nail in 12" CMP		51.70'	SE

Statement of evidence relative to this corner location is on back of page.

I hereby certify that this document and the data contained herein was prepared by me or under my direct supervision.

Doyle C. Mosey 8/25/1988  
SIGNATURE DATE

Registration No. 11943

Land Surveyor,  Professional Engineer

County Surveyor,  County Engineer

OFFICE OF THE COUNTY RECORDER  
County of Yellow Medicine

I hereby certify that this document was filed in the Co. Recorders office at 3:10 P.M. on the 27 day of September A.D., 19 88

County Recorder Norman J. Opdahl  
By Kay Nerdahl, Deputy

DOCUMENT NO. 193902

Statement of Evidence:

John Norgaard on April 26th 1901 set the corner midway and on line;  
between section corners.

I did it the same way because this is a fill area, I did not dig.