

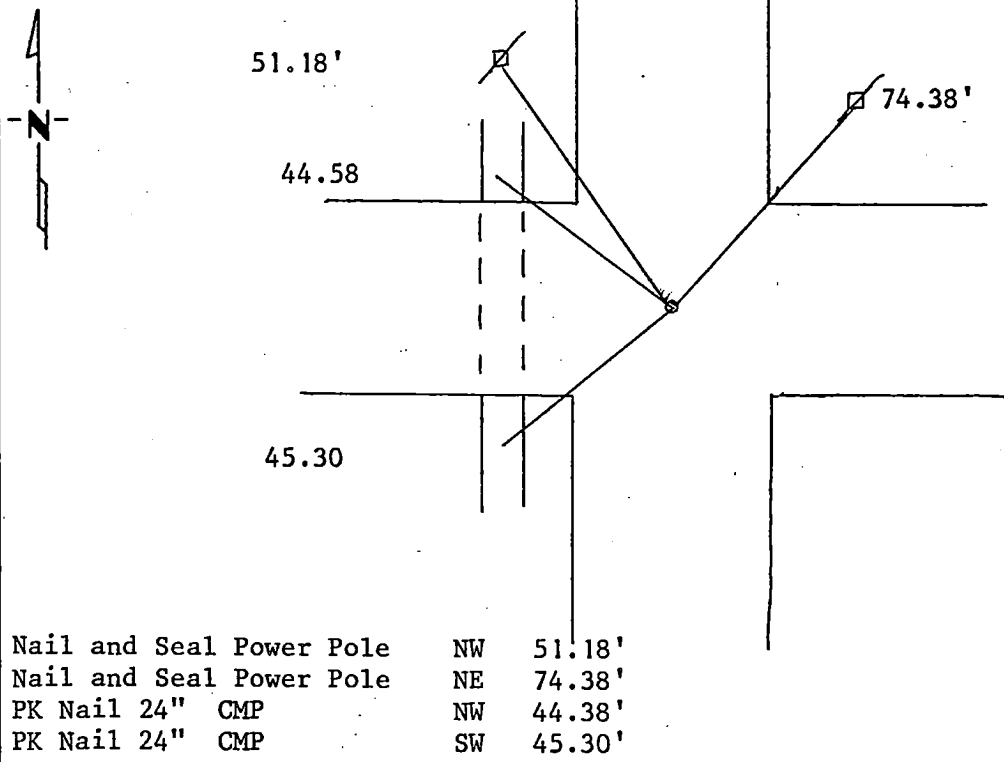
CERTIFICATE OF LOCATION OF GOVERNMENT CORNER

Northeast Corner of Section 26, Township 115 N, Range 46W, 5th P.M.
STATE OF MINNESOTA, County of Yellow Medicine

At the corner location shown on the sketch:

- On 8/18/88 found a 12" Flat top square cut stone monument with a 2" x 2"x6" wooden hub and a 1" square bolt alongside.
DATE
 left monument as found, lowered monument, removed monument (explain)
- On 8/18/88 placed a Set a 1 1/2" Iron Pipe with Seal at road surface.
DATE

SKETCH OF REFERENCE TIES



Statement of evidence relative to this corner location is on back of page.

RECORDED
GRANTOR
GRANTEE
INDEXED

I hereby certify that this document and the data contained herein was prepared by me or under my direct supervision.

Lytle C. Moring 8/25/1988
SIGNATURE DATE

Registration No. 11943

Land Surveyor, Professional Engineer

County Surveyor, County Engineer

OFFICE OF THE COUNTY RECORDER
County of Yellow Medicine

I hereby certify that this document was filed in the Co. Recorders office at 3:15 P.M. on the 27 day of September A.D., 19 88

County Recorder Norman J. Opdahl

By Kay Nordahl, Deputy

DOCUMENT NO. 193903

Statement of Evidence: