

CERTIFICATE OF LOCATION OF GOVERNMENT CORNER

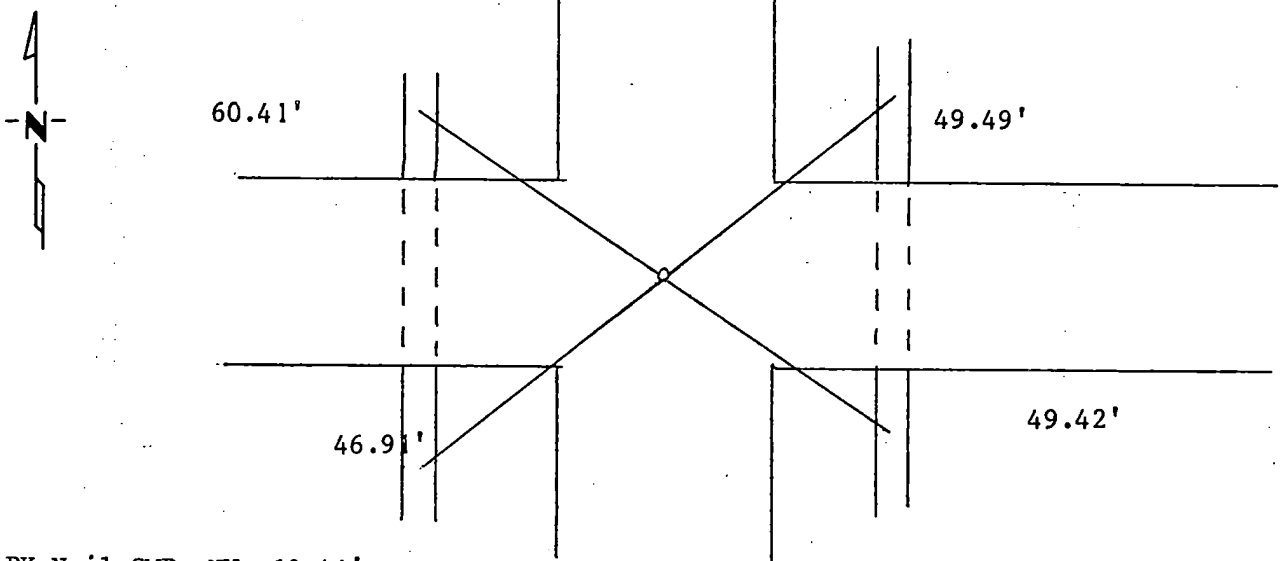
Northeast _____ Corner of Section 35 _____, Township 115N, Range 46W, 5th P.M.

STATE OF MINNESOTA, County of Yellow Medicine

At the corner location shown on the sketch:

- On 8/18/88 found a 1 1/2" Twisted iron rod 3' below road surface. We dug
DATE
5' deep found nothing. I set rod back in at road surface.
- left monument as found, lowered monument, removed monument (explain)
- On _____ placed a _____
DATE

SKETCH OF REFERENCE TIES



PK Nail CMP NW 60.41'
 PK Nail CMP NE 49.49'
 PK Nail CMP SW 46.91'
 PK Nail CMP SE 49.42'

Statement of evidence relative to this corner location is on back of page.

I hereby certify that this document and the data contained herein was prepared by me or under my direct supervision.

Leyle E. Moring 8/25/1988
SIGNATURE DATE

Registration No. 11943

- Land Surveyor, Professional Engineer
- County Surveyor, County Engineer

OFFICE OF THE COUNTY RECORDER

County of Yellow Medicine

I hereby certify that this document was filed in the Co. Recorders office at 3:20 P.M. on the 27 day of September A.D., 19 88

County Recorder Norman J. Opdahl

By Kay Nordahl, Deputy

DOCUMENT NO. 193904

Statement of Evidence: