

CERTIFICATE OF LOCATION OF GOVERNMENT CORNER

East 1/4 Corner of Section 23, Township 115N, Range 42W, 5th P.M.

STATE OF MINNESOTA, County of Yellow Medicine

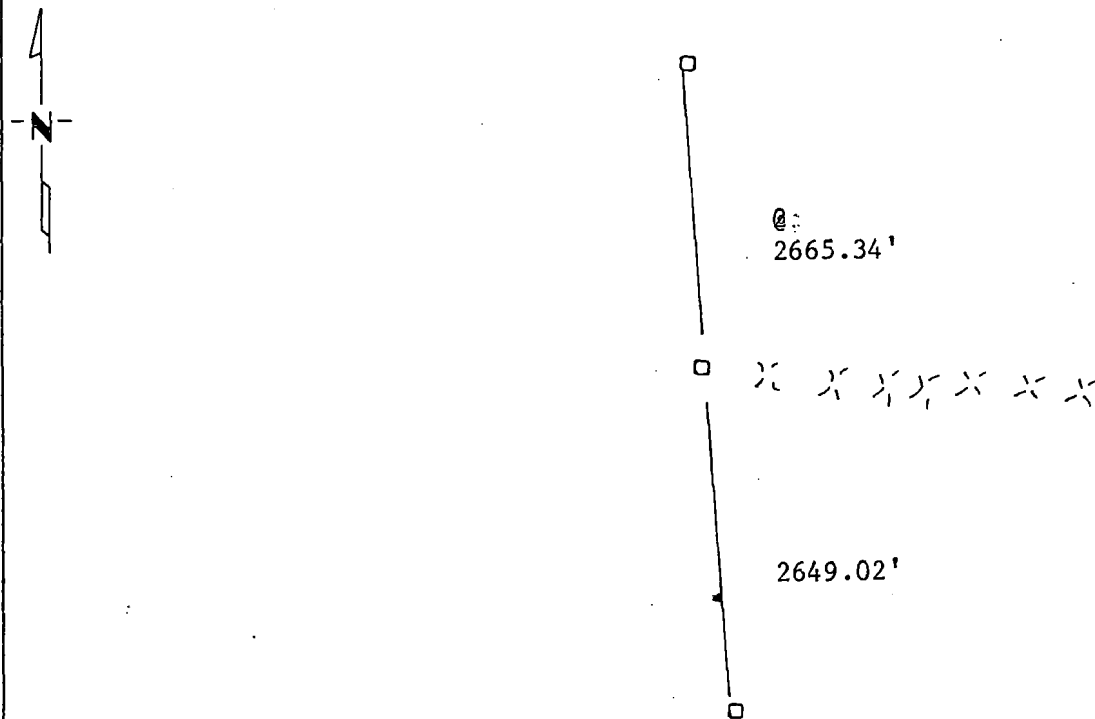
At the corner location shown on the sketch:

On _____ found a _____
DATE

left monument as found, lowered monument, removed monument (explain)

On 4/29/88 placed a 1 1/4" Iron Pipe for the section corner
DATE

SKETCH OF REFERENCE TIES



Statement of evidence relative to this corner location is on back of page.

I hereby certify that this document and the data contained herein was prepared by me or under my direct supervision.

Regis E. Mooney 5/20/88
SIGNATURE DATE

Registration No. 1119430

Land Surveyor, Professional Engineer

County Surveyor, County Engineer

OFFICE OF THE COUNTY RECORDER
County of Yellow Medicine

I hereby certify that this document was filed in the Co. Recorders office at 10:20 A.M. on the 25 day of January A.D., 1989

County Recorder Norman J. Opdahl

By Kay Verdahl, Deputy

DOCUMENT NO. 194569

Statement of Evidence:

On April 29, 1988 we placed a 1 $\frac{1}{4}$ " Iron Pipe for the
~~section~~^{quarter} corner. We placed the corner on line with
the section corners. It is in line with the fence to
the east.