

# CERTIFICATE OF LOCATION OF GOVERNMENT CORNER

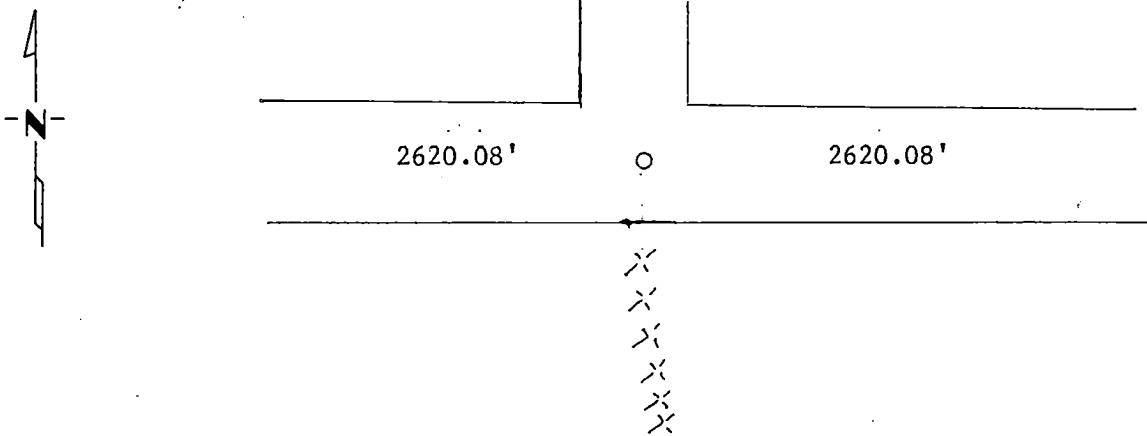
North  $\frac{1}{4}$  Corner of Section 24, Township 115N, Range 42W, 5th P.M.

STATE OF MINNESOTA, County of Yellow Medicine

At the corner location shown on the sketch:

- On \_\_\_\_\_ found a \_\_\_\_\_  
DATE
- left monument as found,  lowered monument,  removed monument (explain)
- On 4/29/88 placed a 1 1/4" Iron Pipe with seal for the section corner  
DATE

### SKETCH OF REFERENCE TIES



Statement of evidence relative to this corner location is on back of page.

I hereby certify that this document and the data contained herein was prepared by me or under my direct supervision.

Leyle E. Mosing 5/18/88  
SIGNATURE DATE

Registration No. 111943  
 Land Surveyor,  Professional Engineer  
 County Surveyor,  County Engineer

OFFICE OF THE COUNTY RECORDER  
County of Yellow Medicine

I hereby certify that this document was filed in the Co. Recorders office at 10:35 A.M. on the 25 day of January A.D., 1989

County Recorder Norman J. Opdahl  
By Kay Nerdahl, Deputy

DOCUMENT NO. 194572

Statement of Evidence:

On April 29, 1988 we dug with a backhoe and found nothing, we then set the corner midway and on line with the section corners.