

CERTIFICATE OF LOCATION OF GOVERNMENT CORNER

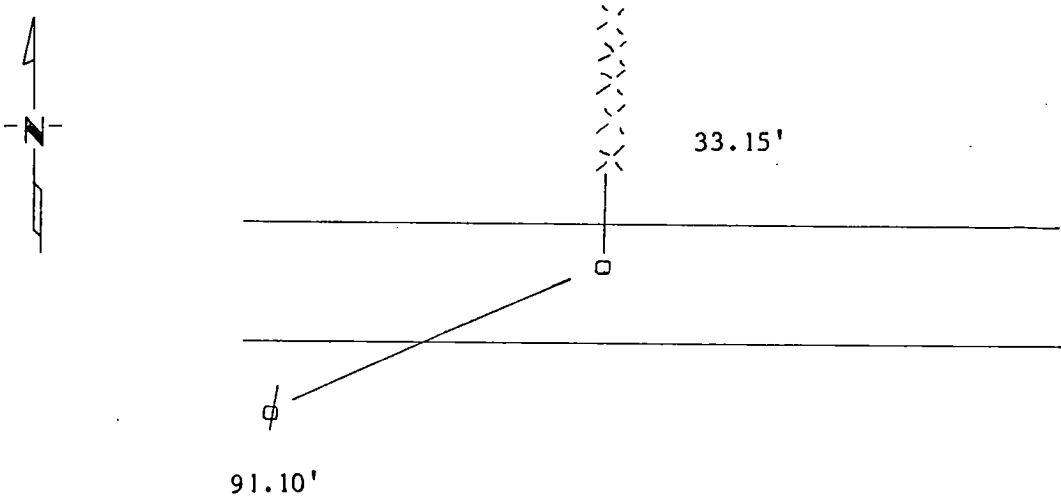
North $\frac{1}{4}$ Corner of Section 25, Township 115N, Range 42W, 5th P.M.

STATE OF MINNESOTA, County of Yellow Medicine

At the corner location shown on the sketch:

- On _____ found a _____
DATE
- left monument as found, lowered monument, removed monument (explain)
- On 4/27/88 placed a 1 1/2" Iron Pipe with Seal midway and on line
DATE
for the corner

SKETCH OF REFERENCE TIES



Center of 3" Pipe end post	North	33.15'
Nail and Seal	SW	91.10'

Statement of evidence relative to this corner location is on back of page.

I hereby certify that this document and the data contained herein was prepared by me or under my direct supervision.

Lytle E. Moring SIGNATURE 5-11-1988 DATE

Registration No. 11943

- Land Surveyor, Professional Engineer
- County Surveyor, County Engineer

OFFICE OF THE COUNTY RECORDER
County of Yellow Medicine

I hereby certify that this document was filed in the Co. Recorders office at 10:40 A.M. on the 25 day of January A.D., 1989

County Recorder Norman J. Opdahl

By Kay Nordahl, Deputy

DOCUMENT NO. 194573

Statement of Evidence:

On April 27, 1988 we placed a 1 1/2" iron pipe into the ground for the section corner. We did not dig for the corner because there was no record of anything being placed there for the corner.