

CERTIFICATE OF LOCATION OF GOVERNMENT CORNER

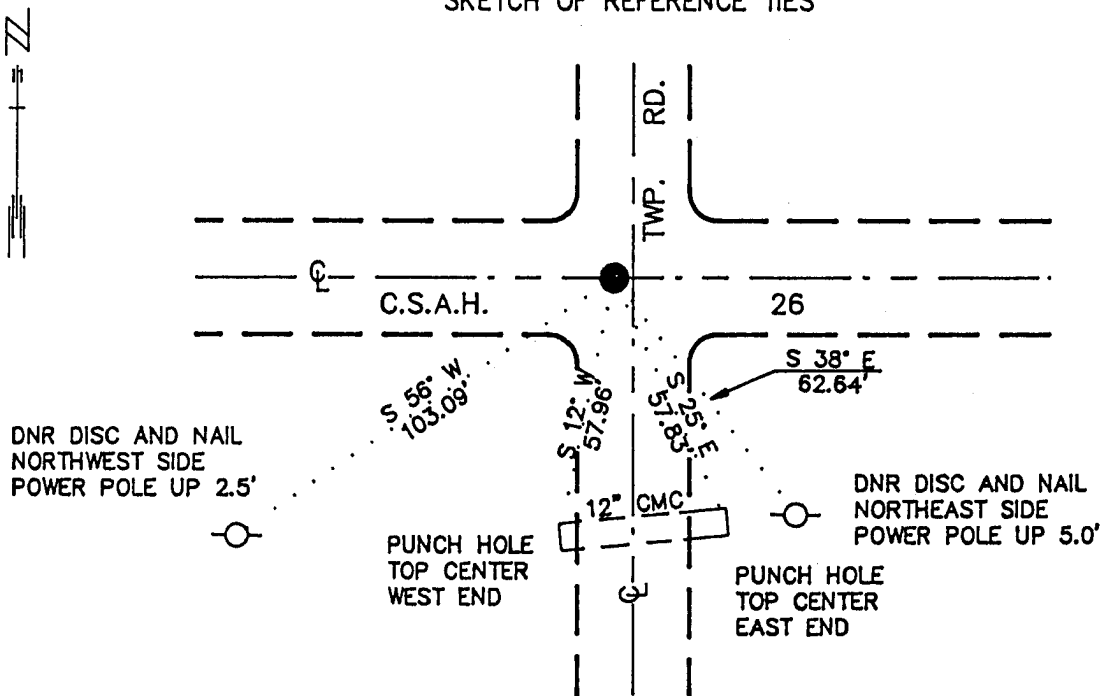
NORTHEAST Corner of Section 23, Township 113 N., Range 39 W., 5th P.M.

STATE OF MINNESOTA, County of YELLOW MEDICINE

At the corner location shown on the sketch:

- On 7/11/89 found a 7"X 7"X 30" STONE, DOWN 2.3'
DATE
- left monument as found, lowered monument, removed monument (explain)
- On 7/11/89 Placed a 1 1/4"X 1 1/4"X 20" PERFORATED STEEL TUBE WITH
DATE
ALUMINUM CAP STAMPED "DNR SURVEY MARKER". DOWN 0.5'

SKETCH OF REFERENCE TIES



NOTE:
PLACED 3/4"X 18" IRON ROD
INSIDE MONUMENT DOWN 0.5'
MONUMENT IS
2.0' WEST CL N-S ROAD

BEARINGS OBSERVED WITH COMPASS

Statement of evidence relative to this corner location is on back of page. 7/25/89
G-225

I hereby certify that this document and the data contained herein was prepared by me or under my direct supervision.

Lowell R. Pommeroy Jr. 8-2-89
SIGNATURE DATE

Registration No. 17005

- Land Surveyor, Professional Engineer
- County Surveyor, County Engineer

OFFICE OF THE COUNTY RECORDER
County of Yellow Medicine

I hereby certify that this document was filed in the Co. recorders office at 11:00 A.M. on the 4 day of August A.D., 1989

County Recorder Norman J. Godeaux

By _____, Deputy

DOCUMENT NO. 195716

Northeast Corner Section 23, Township 113 North, Range 39 West

The DNR Bureau of Engineering contacted the following offices for information on this corner:

MN Secretary of State
Yellow Medicine County Recorder and Highway Engineer
Moseng Land Surveying at Marshall
KBM at Redwood Falls

- 1864 The U.S. General Land Office notes in the Secretary of State's Office show a post set in a mound for the corner.
- 1901 Surveyor's Record Book B, from the County Recorder's Office, contains a collection of what was found at government section corners by John Norgaard, County Surveyor, in a township re-monumentation survey. Norgaard states, on page 219, "located at equal distance between the east 1/4 post Section 14, the east 1/4 post Section 23, the north 1/4 post Section 23 and the north 1/4 post Section 24. Set top of monument 2" above ground." A 6" by 6" by 24" jasper granite monument was set at this location.
- 1910 Surveyor's Record Book, from the County Recorder's Office, contains a survey by John Norgaard, County Surveyor. On page 215, this corner is shown to measure:
2652 ft. from the east quarter corner Section 23
5302 ft. from the northeast corner Section 26
No mention of a monument is made.
- 1941 A government corner tie book, from the County Highway Engineer's Office, shows the center of a monument down 12" with a N.H. top. Three reference ties are shown to the corner.
- 1965 A government corner tie book, from the County Highway Engineer's Office, shows this corner was assumed. "Used one old tie and assumed corner. Dug hole 3 ft. deep but in wrong spot. When frost is gone, dig again before construction." Five reference ties are shown to this corner. From highway stationing, this corner measures:
2658.6 ft. from the north quarter corner Section 24
5316.6 ft. from the northeast corner Section 24
- 1989 July 11, the DNR Bureau of Engineering hired a backhoe operated by Wyatt Bendix of Echo to dig for evidence of this corner. Found two 60d spikes over an 8" by 5" by 11" stone over a 7" by 7" by 30" stone, which was down 2.3 ft. No evidence of record ties were found. Discarded the two spikes and smaller stone and placed a 3/4" by 24" iron rod on the north side of the large stone flush with its top. Set a DNR Survey Marker with a 3/4" by 18" iron rod within down 0.5 ft. over the center of the 7" by 7" by 30" stone. Stone was found to measure:
2658.03 ft. from the north quarter corner Section 24
2655.95 ft. from the east quarter corner Section 23

Analysis of the available information led the DNR Bureau of Engineering to conclude that the found 7" by 7" by 30" stone marks the location of the corner.