

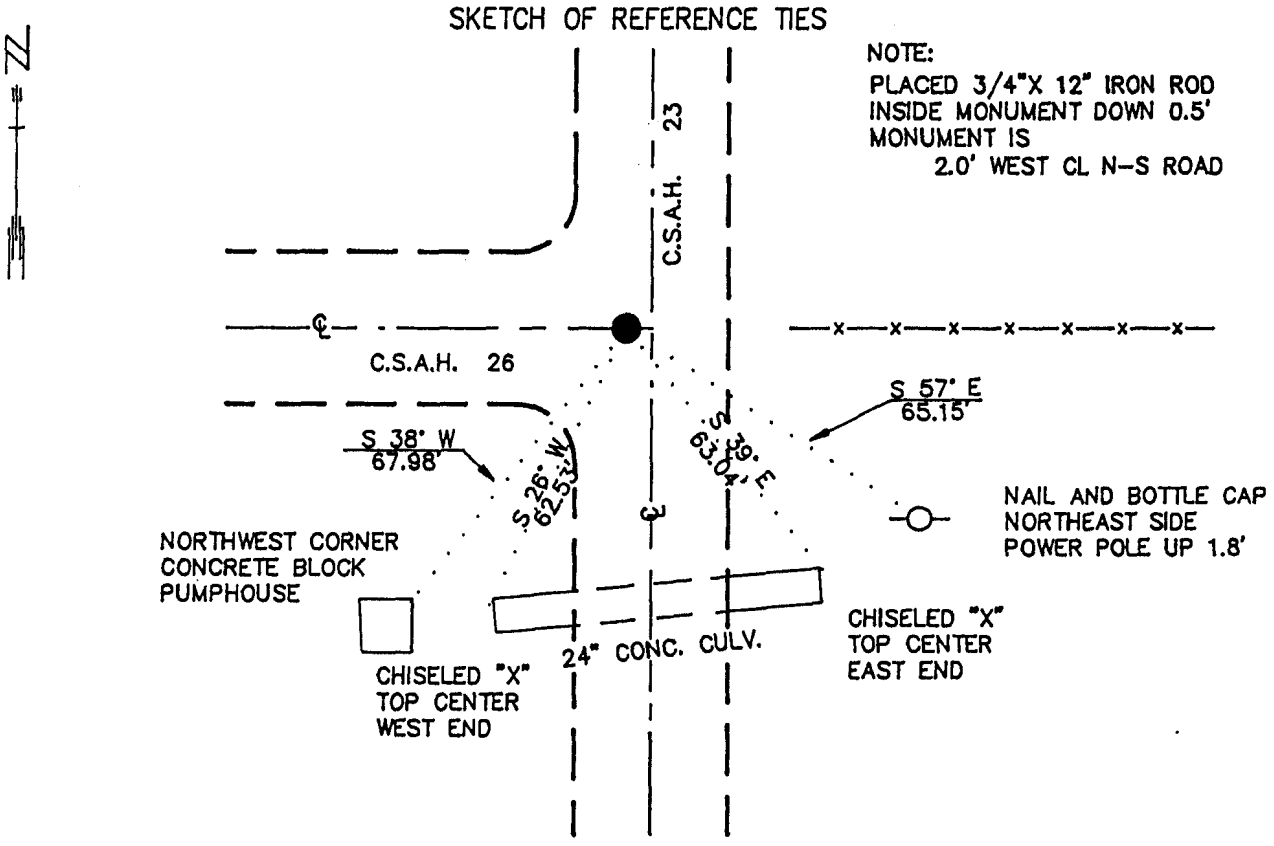
CERTIFICATE OF LOCATION OF GOVERNMENT CORNER

NORTHEAST Corner of Section 24, Township 113 N., Range 39 W., 5 th P.M.

STATE OF MINNESOTA, County of YELLOW MEDICINE

At the corner location shown on the sketch:

- On 7/11/89 found a 6"X 6"X 25" STONE, DOWN 3.8'
DATE
- left monument as found, □ lowered monument, □ removed monument (explain)
- On 7/11/89 Placed a 1 1/4"X 1 1/4"X 20" PERFORATED STEEL TUBE WITH
DATE
ALUMINUM CAP STAMPED "DNR SURVEY MARKER", DOWN 0.5'



Statement of evidence relative to this corner location is on back of page.

7/25/89
G-225

I hereby certify that this document and the data contained herein was prepared by me or under my direct supervision.

Russell R. Pommeroy 8-2-89
SIGNATURE DATE

Registration No. 17005

- Land Surveyor, □ Professional Engineer
- County Surveyor, □ County Engineer

OFFICE OF THE COUNTY RECORDER
County of Yellow Medicine

I hereby certify that this document was filed in the Co. recorders office at 11:10 A.M. on the 4 day of August A.D., 1989

County Recorder Norman Goshaw
By _____, Deputy

DOCUMENT NO. 195718

Northeast Corner Section 24, Township 113 North, Range 39 West

The DNR Bureau of Engineering contacted the following offices for information on this corner:

MN Secretary of State
Yellow Medicine County Recorder and Highway Engineer
Moseng Land Surveying at Marshall
KBM at Redwood Falls

- 1857 The U.S. General Land Office notes in the Secretary of State's Office show the corner is a post, drove charred stake, built mound of earth and dug trench as per instructions.
- 1901 Surveyor's Record Book B, from the County Recorder's Office, contains a collection of what was found at government section corners by John Norgaard, County Surveyor, in a township re-monumentation survey. Norgaard states, on page 208, "located according to a survey made by me 5 years ago when the government corners were plain. Set top of monument 2" above ground." A 6" by 6" by 24" jasper granite monument was set at this location.
- 1941 A government corner tie book, from the County Highway Engineer's Office, shows a regular monument 18" deep with two stones on top. Five reference ties are shown to this corner.
- 1964 June, the DNR Bureau of Engineering found the corner as described by the county ties. The lowest monument was found down 30" with two stones on top of it. Placed a railroad spike over the stones at the surface of the road. Four reference ties are shown.
- 1965 A government corner tie book, from the County Highway Engineer's Office, shows located iron pin placed over monument by state last year for public access. Four reference ties are shown to this corner. From highway stationing, this corner measures:
2658 ft. from the north quarter corner Section 24
5316.6 ft. from the northeast corner Section 23
- 1979 A government corner tie book, from the County Highway Engineer's Office, shows located granite monument 18" deep with 2 field stones, railroad spike and two 60d spikes on top. Four reference ties are shown to this monument.
- 1989 July 11, the DNR Bureau of Engineering hired a backhoe operated by Wyatt Bendix of Echo to dig for evidence of this corner. Found an 18" bolt over an 11" by 10" by 6" stone and railroad spike over a 6" by 6" by 25" stone, which was down 3.8 ft. The square stone was leaning slightly east, plumbed same and placed a 3/4" by 24" iron rod on its north side flush with its top. Discarded other found monuments and placed a DNR Survey Marker with 3/4" by 12" iron rod within down 0.5 over the squared stone. Stone was found to measure:
2656.56 ft. from the north quarter corner Section 24
2865.50 ft. from MC #3 of Section 24

Analysis of the available information led the DNR Bureau of Engineering to conclude that the found 6" by 6" by 25" stone marks the location of the corner.