

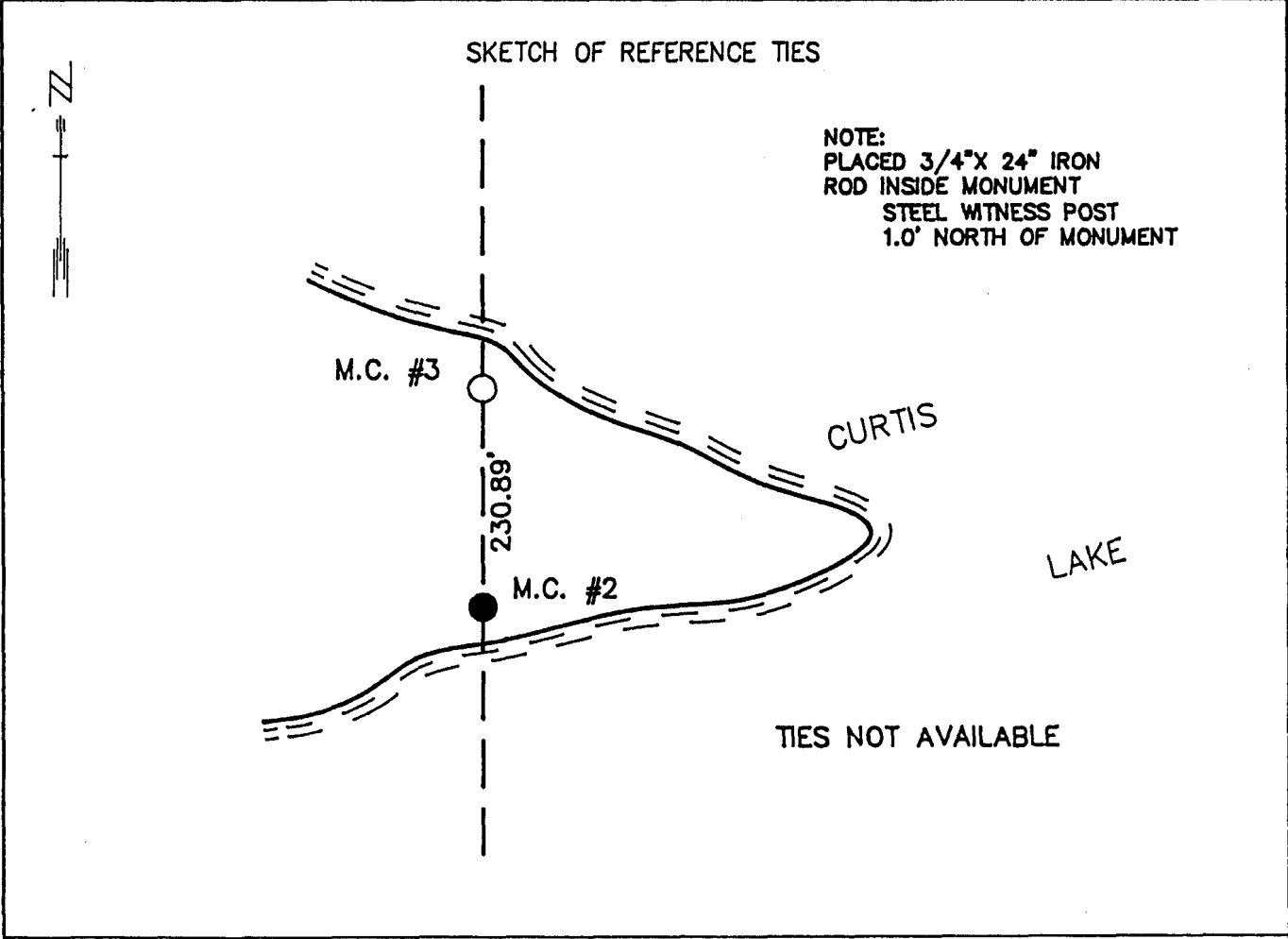
CERTIFICATE OF LOCATION OF GOVERNMENT CORNER

#2 MEANDER Corner of Section 24, Township 113 N., Range 39 W., 5th P.M.

STATE OF MINNESOTA, County of YELLOW MEDICINE

At the corner location shown on the sketch:

- On _____ found a _____
DATE
- left monument as found, lowered monument, removed monument (explain)
- On 7/19/89 Placed a 1 1/4" X 1 1/4" X 20" PERFORATED STEEL TUBE WITH
DATE ALUMINUM CAP STAMPED "DNR SURVEY MARKER", UP 0.2'



Statement of evidence relative to this corner location is on back of page. 7/27/89
G-225

I hereby certify that this document and the data contained herein was prepared by me or under my direct supervision.

Paul R. Pommeroy 8-2-89
SIGNATURE DATE

Registration No. 17005

Land Surveyor, Professional Engineer
 County Surveyor, County Engineer

OFFICE OF THE COUNTY RECORDER
County of Yellow Medicine

I hereby certify that this document was filed in the Co. recorders office at 11:20 A .M. on the 4 day of August A.D., 1989

County Recorder Norm J. Godeaux
By _____, Deputy
DOCUMENT NO. 195720

Meander Corner #2 of Section 24, Township 113 North, Range 39 West

The DNR Bureau of Engineering contacted the following offices for information on this corner:

MN Secretary of State
Yellow Medicine County Recorder and Highway Engineer
Moseng Land Surveying at Marshall
KBM at Redwood Falls

1857 The U.S. General Land Office notes in the Secretary of State's Office show the corner marked with a wood post and recorded the following bearing trees:

Elm, 20 inch diameter bears N. 61° E., 16 links
Ash, 7 inch diameter bears S. 51½° W., 29 links

1989 July, the DNR Bureau of Engineering conducted a search for this corner, but found nothing, no evidence of the government bearing trees. Computed the lost position for this corner and found it to measure:

230.89 ft. from MC #3 of Section 24

4848.62 ft. from the east quarter corner Section 25

July 17, the DNR Bureau of Engineering hired a backhoe operated by Wyatt Bendix of Echo to dig for evidence of this corner. Dug a 12 ft. north-south by 16 ft. east-west hole to a depth of 2 ft., around the lost position, but found nothing. Lost position falls at the top of lake bank of Curtis Lake.

Analysis of the available information led the DNR Bureau of Engineering to conclude that the lost position marks the location of the corner.