

CERTIFICATE OF LOCATION OF GOVERNMENT CORNER

#3 MEANDER Corner of Section 24, Township 113 N., Range 39 W., 5th P.M.

STATE OF MINNESOTA, County of YELLOW MEDICINE

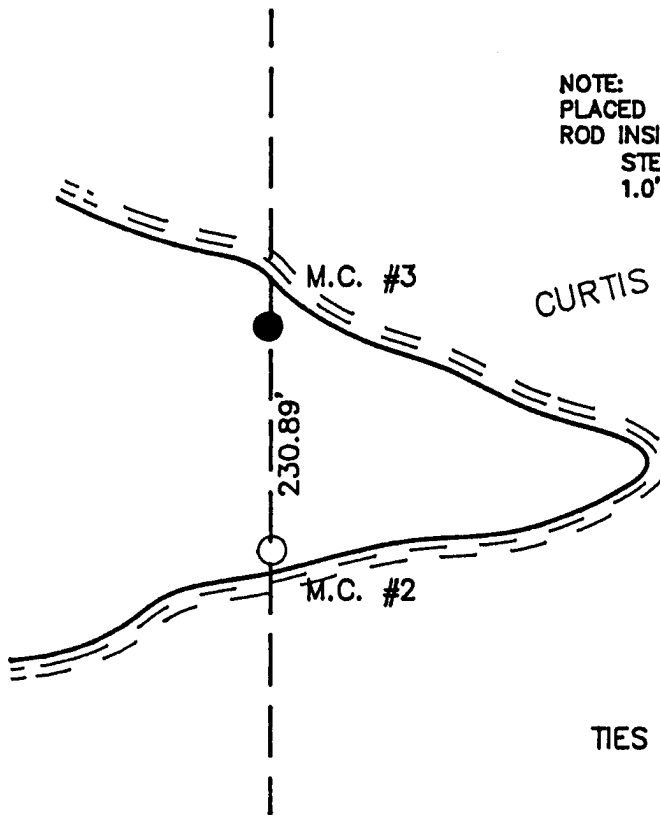
At the corner location shown on the sketch:

On 7/17/89 found a CHARRED WOOD STAKE
DATE

left monument as found, lowered monument, removed monument (explain)

On 7/17/89 Placed a 1 1/4" X 1 1/4" X 20" PERFORATED STEEL TUBE WITH
DATE ALUMINUM CAP STAMPED "DNR SURVEY MARKER", DOWN 0.5'

SKETCH OF REFERENCE TIES



NOTE:
PLACED 3/4" X 24" IRON
ROD INSIDE MONUMENT
STEEL WITNESS POST
1.0' NORTH OF MONUMENT

TIES NOT AVAILABLE

Statement of evidence relative to this corner location is on back of page.

7/27/89
G-225

I hereby certify that this document and the data contained herein was prepared by me or under my direct supervision

Lowell R. Pomeroy 8-2-89
SIGNATURE DATE

Registration No. 17005

- Land Surveyor, Professional Engineer
 County Surveyor, County Engineer

OFFICE OF THE COUNTY RECORDER

County of Yellow Medicine

I hereby certify that this document was filed in the Co. recorders office at 11:25 A.M. on the 4 day of August A.D., 1989

County Recorder Norm A. Godwin
By _____, Deputy

DOCUMENT NO. 195721

Meander Corner #3 of Section 24, Township 113 North, Range 39 West

The DNR Bureau of Engineering contacted the following offices for information on this corner:

MN Secretary of State

Yellow Medicine County Recorder and Highway Engineer

Moseng Land Surveying at Marshall

KBM at Redwood Falls

1857 The U.S. General Land Office notes in the Secretary of State's Office show the corner is a post, drove charred stake, built mound of earth and dug trench as per instructions.

1989 July 17, the DNR Bureau of Engineering hired a backhoe operated by Wyatt Bendix of Echo to dig for evidence of this corner. Found a piece of a charred wood stake at the top of lake bank. Did not find any other pieces of wood or anything else that would discredit the found wood stake. Soil conditions at this corner area of the sand variety, relatively undisturbed. Wood stake was found to measure:

2865.50 ft. from the northeast corner Section 24

5079.50 ft. from the east quarter corner Section 25

1.28 ft. east of a straight line between these above mentioned government corners

Analysis of the available information led the DNR Bureau of Engineering to conclude that the found charred wood stake is the one set by the GLO and location of the corner.