

CERTIFICATE OF LOCATION OF GOVERNMENT CORNER

#1 MEANDER Corner of Section 25, Township 113 N., Range 39 W., 5th P.M.

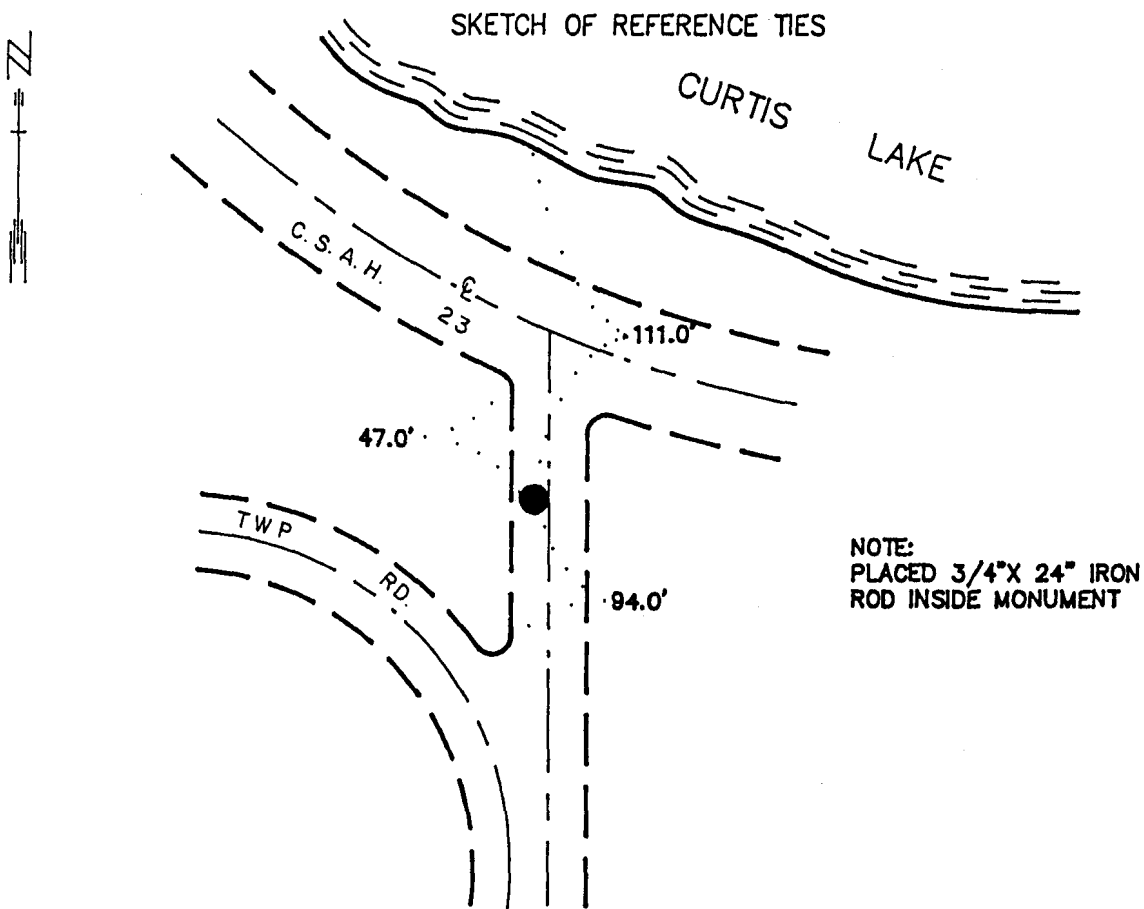
STATE OF MINNESOTA, County of YELLOW MEDICINE

At the corner location shown on the sketch:

On _____ found a _____
DATE

left monument as found, lowered monument, removed monument (explain)

On 7/19/89 Placed a 1 1/4" X 1 1/4" X 20" PERFORATED STEEL TUBE WITH
DATE ALUMINUM CAP STAMPED "DNR SURVEY MARKER", DOWN 0.7'



Statement of evidence relative to this corner location is on back of page.

7/27/89
G-225

I hereby certify that this document and the data contained herein was prepared by me or under my direct supervision.

Loull R. Pommeroy 8-2-89
SIGNATURE DATE

Registration No. 17005

- Land Surveyor, Professional Engineer
- County Surveyor, County Engineer

OFFICE OF THE COUNTY RECORDER
County of Yellow Medicine

I hereby certify that this document was filed in the Co. recorders office at 11:45 A.M. on the 4 day of August A.D., 1989

County Recorder Norman Godwin

By _____, Deputy

DOCUMENT NO. 195725

Meander Corner #1 of Section 25, Township 113 North, Range 39 West

The DNR Bureau of Engineering contacted the following offices for information on this corner:

MN Secretary of State

Yellow Medicine County Recorder and Highway Engineer

Moseng Land Surveying at Marshall

KBM at Redwood Falls

1857 The U.S. General Land Office notes in the Secretary of State's Office show the corner is a post, drove charred stake, built mound of earth and dug trench as per instructions.

1989 July, the DNR Bureau of Engineering computed the lost position for this corner and found it to measure:

2328.66 ft. from the east quarter corner Section 25

2750.84 ft. from Meander Corner #3 of Section 24

July 17, the DNR Bureau of Engineering hired a backhoe operated by Wyatt Bendix of Echo to dig for evidence of this corner. Dug a 16 ft. north-south by 10 ft. east-west hole to a depth of 1 ft. around the lost position, but found nothing. Corner area appears to be in a cut section of road.

Analysis of the available information led the DNR Bureau of Engineering to conclude that the lost position marks the location of the corner.