

# CERTIFICATE OF LOCATION OF GOVERNMENT CORNER

#15 MEANDER Corner of Section 25, Township 113 N., Range 39 W., 5th P.M.

STATE OF MINNESOTA, County of YELLOW MEDICINE

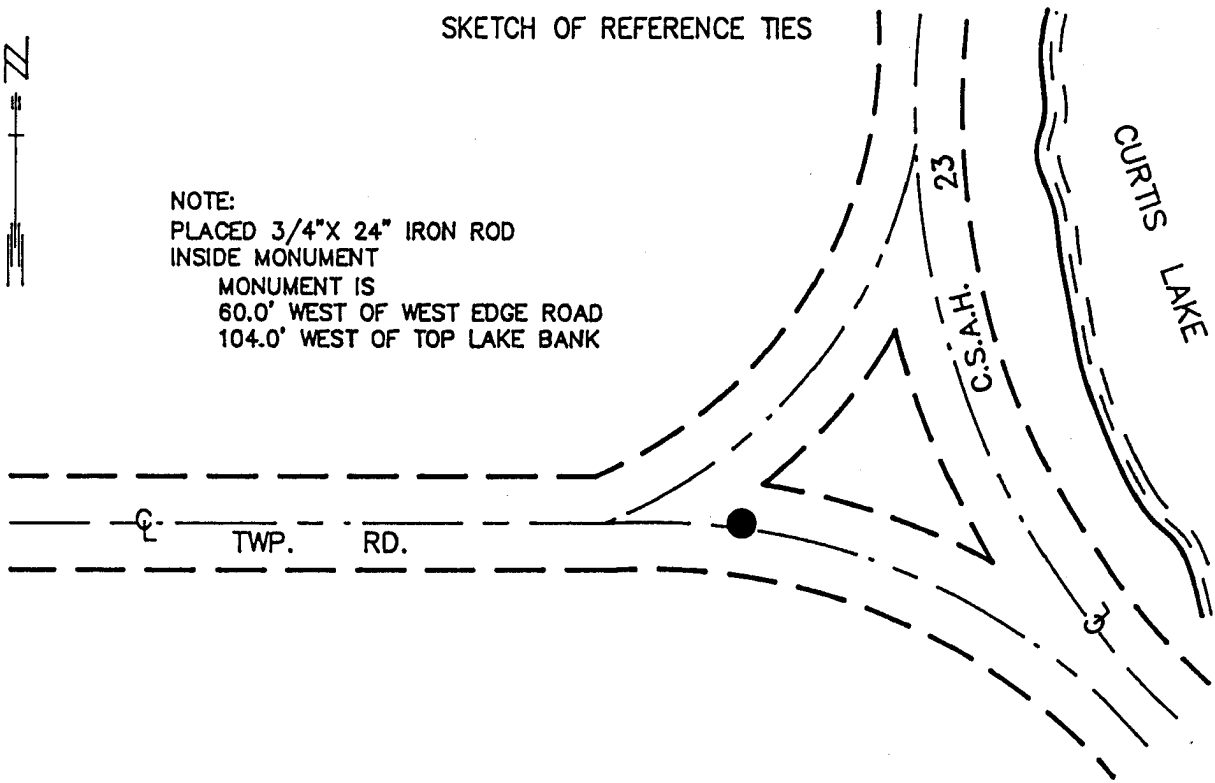
At the corner location shown on the sketch:

- On \_\_\_\_\_ found a \_\_\_\_\_  
DATE
- left monument as found,  lowered monument,  removed monument (explain)
- On 7/18/89 Placed a 1 1/4" X 1 1/4" X 20" PERFORATED STEEL TUBE WITH  
DATE ALUMINUM CAP STAMPED "DNR SURVEY MARKER", DOWN 0.5'

SKETCH OF REFERENCE TIES



NOTE:  
 PLACED 3/4" X 24" IRON ROD  
 INSIDE MONUMENT  
 MONUMENT IS  
 60.0' WEST OF WEST EDGE ROAD  
 104.0' WEST OF TOP LAKE BANK



TIES NOT AVAILABLE

Statement of evidence relative to this corner location is on back of page.

7/26/89  
G-225

I hereby certify that this document and the data contained herein was prepared by me or under my direct supervision.

*Rowell R. Pommeroy* 8-2-89  
 SIGNATURE DATE

Registration No. 17005

- Land Surveyor,  Professional Engineer
- County Surveyor,  County Engineer

OFFICE OF THE COUNTY RECORDER  
County of Yellow Medicine

I hereby certify that this document was filed in the Co. recorders office at 11:50 A.M. on the 4 day of August A.D., 1989

County Recorder Norman J. Coder  
By \_\_\_\_\_, Deputy

DOCUMENT NO. 195726

Meander Corner #15 of Section 25, Township 113 North, Range 39 West

The DNR Bureau of Engineering contacted the following offices for information on this corner:

MN Secretary of State  
Yellow Medicine County Recorder and Highway Engineer  
Moseng Land Surveying at Marshall  
KBM at Redwood Falls

- 1864 The U.S. General Land Office notes in the Secretary of State's Office show a post set in a mound for the corner.
- 1901 Surveyor's Record Book B, from the County Recorder's Office, contains a collection of what was found at government section corners by John Norgaard, County Surveyor, in a township re-monumentation survey. Norgaard states, on page 215, the northeast corner of Section 25 is the lake, therefore "Set the monument in the government M.C. on the west side of lake between Sections 24 and 25." A 6" by 6" by 24" jasper granite monument was set at this location.
- 1989 July, the DNR Bureau of Engineering computed a position for this corner proportionately from the north quarter corner Section 25 and on the center line of an east-west road. Computed position measures:  
2098.46 ft. from the north quarter corner Section 25  
July 17, the DNR Bureau of Engineering hired a backhoe operated by Wyatt Bendix of Echo to dig for evidence of this corner. Dug an 8 ft. north-south by 14 ft. east-west by 3 ft. deep hole around the above mentioned computed position. Found only a 1" by 3" piece of wood, not very old, which was discarded. Did not find any stones.

Analysis of the available information led the DNR Bureau of Engineering to conclude that the computed position, proportionately from the north quarter corner Section 25 and on the centerline of the road, marks the location of the corner.