

# CERTIFICATE OF LOCATION OF GOVERNMENT CORNER

NORTHEAST Corner of Section 26, Township 113 N., Range 39 W., 5th P.M.

STATE OF MINNESOTA, County of YELLOW MEDICINE

At the corner location shown on the sketch:

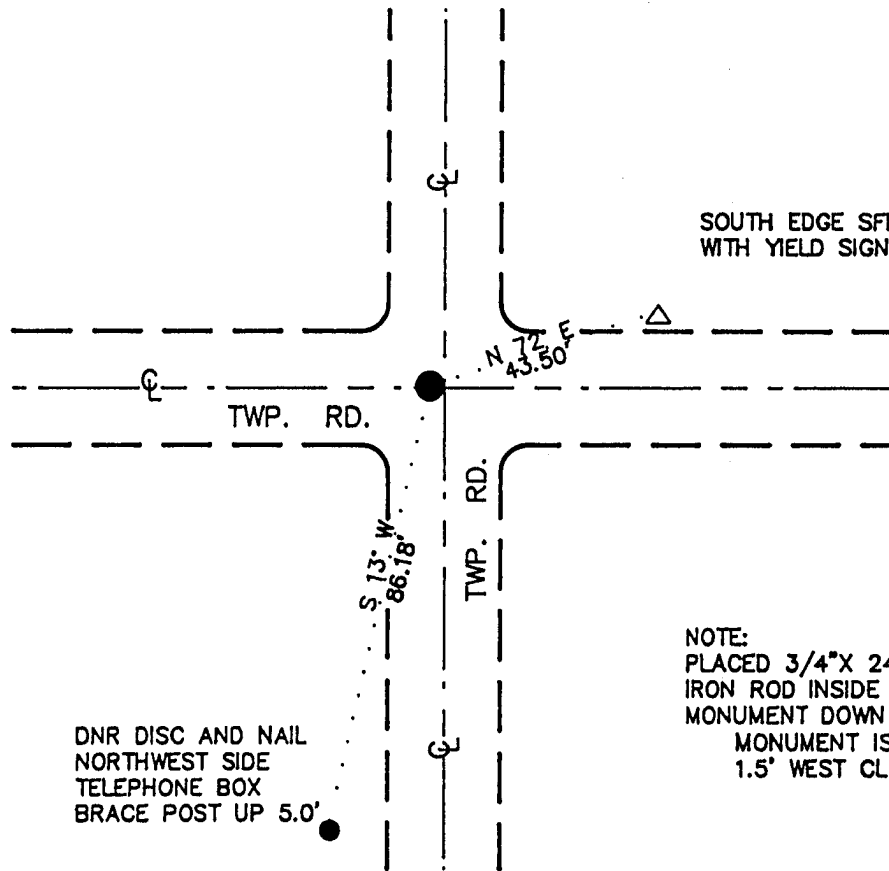
■ On 7/11/89 found a 7"X 7"X 26" STONE DOWN 2.5'  
DATE

■ left monument as found,    □ lowered monument,    □ removed monument (explain)

■ On 7/11/89 Placed a 1 1/4"X 1 1/4"X 20" PERFORATED STEEL TUBE WITH  
DATE ALUMINUM CAP STAMPED "DNR SURVEY MARKER", DOWN 0.5'



### SKETCH OF REFERENCE TIES



SOUTH EDGE SFP  
WITH YIELD SIGN

N 72° E  
43.50'

TWP. RD.

TWP. RD.

S 73° W  
86.18'

DNR DISC AND NAIL  
NORTHWEST SIDE  
TELEPHONE BOX  
BRACE POST UP 5.0'

NOTE:  
PLACED 3/4"X 24"  
IRON ROD INSIDE  
MONUMENT DOWN 0.5'  
MONUMENT IS  
1.5' WEST CL N-S ROAD

BEARINGS OBSERVED WITH COMPASS

Statement of evidence relative to this corner location is on back of page.

7/26/89  
G-225

I hereby certify that this document and the data contained herein was prepared by me or under my direct supervision.

Lowell R. Pommeroy 8-2-89  
SIGNATURE DATE

Registration No. 17005

- Land Surveyor,     Professional Engineer
- County Surveyor,     County Engineer

OFFICE OF THE COUNTY RECORDER  
County of Yellow Medicine

I hereby certify that this document was filed in the Co. recorders office at 11:55 A. .M. on the 4 day of August A.D., 19 89

County Recorder Norman G. Gode

By \_\_\_\_\_, Deputy

DOCUMENT NO. 195727

Northeast Corner Section 26, Township 113 North, Range 39 West

The DNR Bureau of Engineering contacted the following offices for information on this corner:

MN Secretary of State  
Yellow Medicine County Recorder and Highway Engineer  
Moseng Land Surveying at Marshall  
KBM at Redwood Falls

- 1864 The U.S. General Land Office notes in the Secretary of State's Office show a post set in a mound for the corner.
- 1901 Surveyor's Record Book B, from the County Recorder's Office, contains a collection of what was found at government section corners by John Norgaard, County Surveyor, in a township re-monumentation survey. Norgaard states, on page 220, "Found stone in the government mound. Set top of monument level with ground." A 6" by 6" by 24" jasper granite monument was set at this location.
- 1910 Surveyor's Record Book, from the County Recorder's Office, contains a survey by John Norgaard, County Surveyor. On page 215, this corner is shown to measure:  
2650 ft. from the east quarter corner Section 23  
5302 ft. from the northeast corner Section 23  
No mention of a monument is made.
- 1915 Surveyor's Record Book, from the County Recorder's Office, contains a survey by John Norgaard, County Surveyor. On page 343, this corner is described as a found jasper stone monument.
- 1941 A government corner tie book, from the County Highway Engineer's Office, shows the center of a monument is down 12". Four reference ties are shown to this corner.
- 1954 July, the DNR Bureau of Engineering found a chiseled "+" on the high point of a dark stone 1.0 ft. below road surface. Three county reference ties were also found. Monument is shown at the intersection of roads north-south and east-west.
- 1989 July 11, the DNR Bureau of Engineering hired a backhoe operated by Wyatt Bendix of Echo to dig for evidence of this corner. Found a 10" by 10" by 8" stone and wood hub over a 9" by 11" by 6" stone over a 7" by 7" by 26" stone which was down 2.5 ft. Stone was found to measure:  
2647.87 ft. from the north quarter corner Section 25  
2652.05 ft. from the east quarter corner Section 23  
Placed a 3/4" by 24" iron rod on the north side of the lower square stone flush with its top. Discarded the other monuments and placed a DNR Survey Marker with a 3/4" by 24" iron rod inside down 0.5 ft. over the square stone.

Analysis of the available information led the DNR Bureau of Engineering to conclude that the found 7" by 7" by 26" stone marks the location of the corner.