

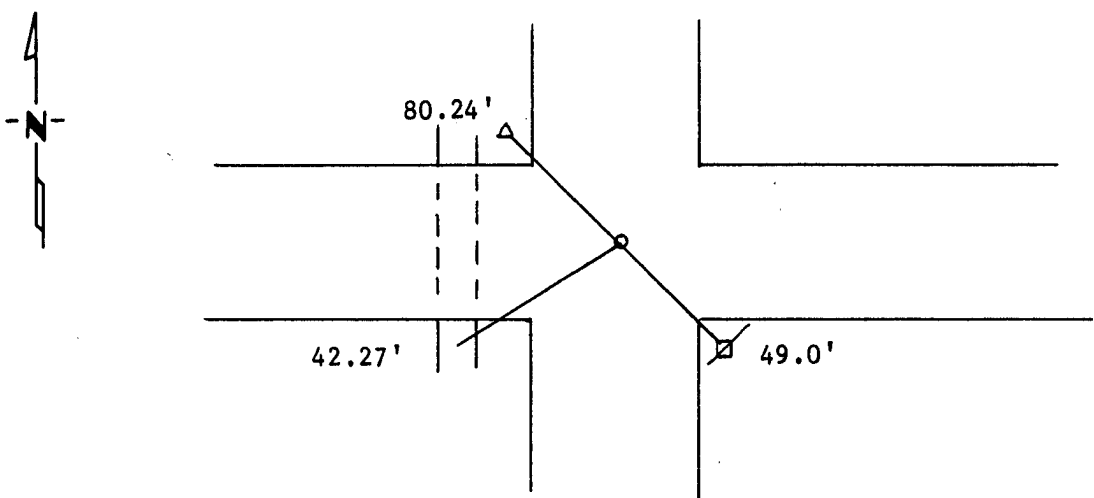
CERTIFICATE OF LOCATION OF GOVERNMENT CORNER

Northeast Corner of Section 6, Township 114N, Range 39W, 5th P.M.
STATE OF MINNESOTA, County of Yellow Medicine

At the corner location shown on the sketch:

- On 4/25/77 found a Granite stone in middle of intersection.
DATE
- left monument as found, lowered monument, removed monument (explain)
- On 4/25/77 placed a 5/8" rerod with seal 9" long on top of it.
DATE

SKETCH OF REFERENCE TIES



PK Nail in 18" CMP SW 42.27'
 Nail and Bottel Cap Power Pole SE 49.00'
 Nail and Bottel Cap Telephone Pedastel NW 80.24'

Statement of evidence relative to this corner location is on back of page.

I hereby certify that this document and the data contained herein was prepared by me or under my direct supervision.

Lytle C. Mooring 2/22/1989
 SIGNATURE DATE

Registration No. 119430

Land Surveyor, Professional Engineer
 County Surveyor, County Engineer

OFFICE OF THE COUNTY RECORDER
 County of Yellow Medicine

I hereby certify that this document was filed in the Co. Recorders office at 9:55 A.M. on the 8 day of November A.D., 19 89

County Recorder Edward G. Clark
 By _____, Deputy
 DOCUMENT NO. 196204

Statement of Evidence: