

Sk 6 1968

Y.M. Index No. _____

CERTIFICATE OF LOCATION OF GOVERNMENT CORNER

Northeast Corner of Section 8, Township 114N, Range 43W, 5th P.M.

STATE OF MINNESOTA, County of Yellow Medicine

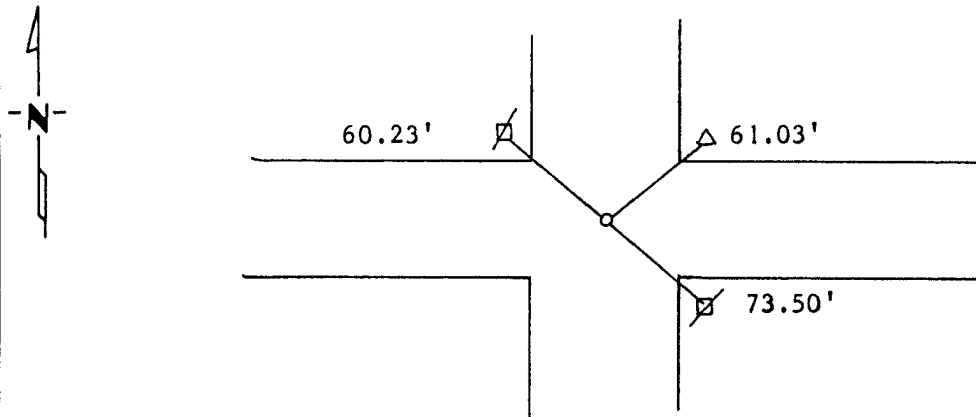
At the corner location shown on the sketch:

On 8/77 found a 1/2" smooth rod 12" below road surface in old road
DATE
bed, we dug around it and found no stone.

left monument as found, lowered monument, removed monument (explain)

On _____ placed a _____
DATE

SKETCH OF REFERENCE TIES



Nail and Bottel Cap Power Pole NW 60.23'
Nail and Bottel Cap Power Pole SE 73.50'
Nail and Bottel Cap Telephone Pedastel NE 61.03'

Statement of evidence relative to this corner location is on back of page.

I hereby certify that this document and the data contained herein was prepared by me or under my direct supervision.

Lyle E. Moseley 2/22/1989
SIGNATURE DATE

Registration No. 11943

Land Surveyor, Professional Engineer

County Surveyor, County Engineer

OFFICE OF THE COUNTY RECORDER

County of Yellow Medicine

I hereby certify that this document was filed in the Co. Recorders office at 10:05 A.M. on the 8 day of November A.D., 19 89

County Recorder Norman J. Ford

By _____, Deputy

DOCUMENT NO. 196206

Statement of Evidence: