

CERTIFICATE OF LOCATION OF GOVERNMENT CORNER

Northeast Corner of Section 12, Township 114N, Range 46 W, 5th P.M.

STATE OF MINNESOTA, County of Yellow Medicine

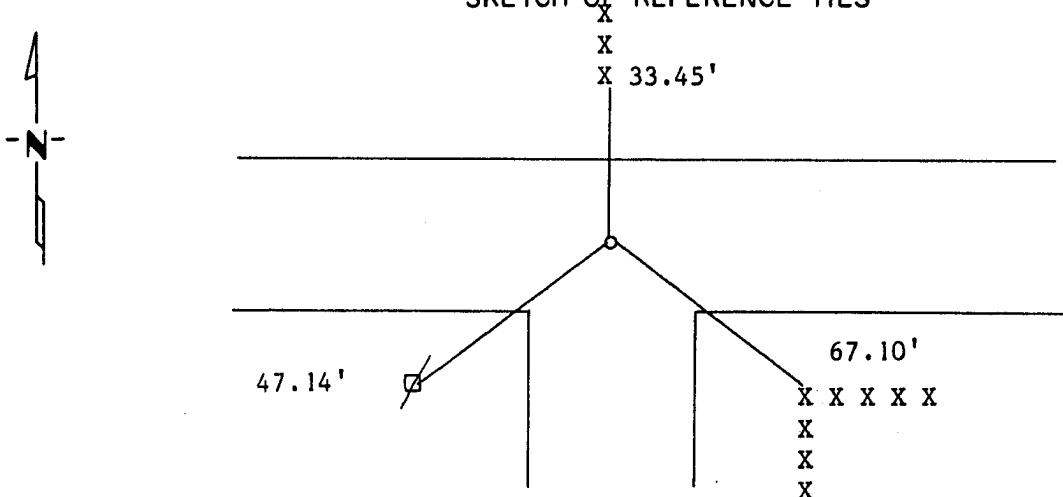
At the corner location shown on the sketch:

On 11/28/84 found a Square cut stone.

left monument as found, lowered monument, removed monument (explain)

On 11/28/84 placed a Set a 5/8" rerod with Seal on top of stone.

SKETCH OF REFERENCE TIES



Nail and Seal in Fence Post N 33.45'
 Nail and Seal in Fence Post SE 67.10'
 Nail and Seal in Power Pole SW 47.14'

Statement of evidence relative to this corner location is on back of page.

I hereby certify that this document and the data contained herein was prepared by me or under my direct supervision.

Lytle E. Moring 2/22/1989
SIGNATURE DATE

Registration No. 11943

- Land Surveyor, Professional Engineer
- County Surveyor, County Engineer

OFFICE OF THE COUNTY RECORDER
County of Yellow Medicine

I hereby certify that this document was filed in the Co. Recorders office at 10:15 A.M. on the 8 day of November A.D., 1989

County Recorder Norman J. Gdars

By _____, Deputy

DOCUMENT NO. 196208

Statement of Evidence: