

CERTIFICATE OF LOCATION OF GOVERNMENT CORNER

Northeast Corner of Section 13, Township 114N, Range 46W, 5th P.M.

STATE OF MINNESOTA, County of Yellow Medicine

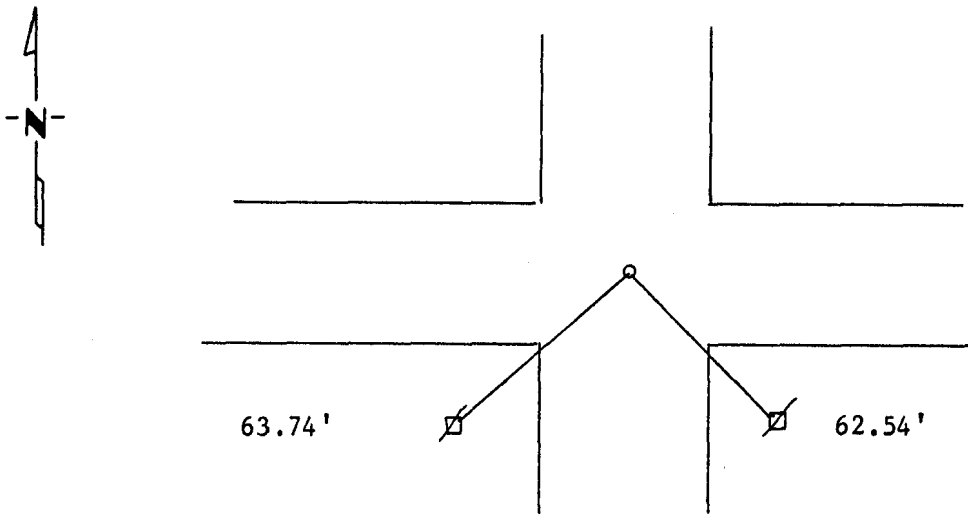
At the corner location shown on the sketch:

On 11/28/84 found a Square cut stone.
DATE

left monument as found, lowered monument, removed monument (explain)

On 11/28/84 placed a Ser a 5/8" rerod with Seal on top of stone.
DATE

SKETCH OF REFERENCE TIES



Nail and Seal in Power Pole SW 63.74'
Nail and Seal in Power Pole SE 62.54'

Statement of evidence relative to this corner location is on back of page.

I hereby certify that this document and the data contained herein was prepared by me or under my direct supervision.

Lyle E. Moseng 2/22/89
SIGNATURE DATE

Registration No. 11943

- Land Surveyor, Professional Engineer
- County Surveyor, County Engineer

OFFICE OF THE COUNTY RECORDER

County of Yellow Medicine

I hereby certify that this document was filed in the Co. Recorders office at 10:20 A.M. on the 8 day of November A.D., 19 89

County Recorder Norman Goddard

By _____, Deputy

DOCUMENT NO. 196209

Statement of Evidence: