

CERTIFICATE OF LOCATION OF GOVERNMENT CORNER

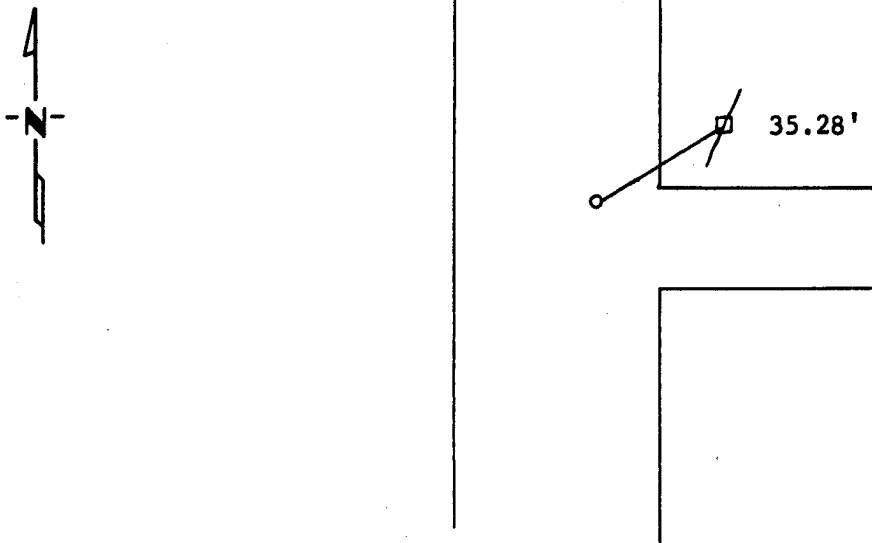
East Quarter Corner of Section 15, Township 115 N, Range 45 W, 5th P.M.

STATE OF MINNESOTA, County of Yellow Medicine

At the corner location shown on the sketch:

- On _____ found a _____
DATE
- left monument as found, lowered monument, removed monument (explain)
- On 4/11/88 placed a Set a 5/8" rerod with seal midway and on line in
DATE between section corners.

SKETCH OF REFERENCE TIES



Nail and Seal in Power Pole 35.28'

Rerod set 5' feet from center of road.

Statement of evidence relative to this corner location is on back of page.

I hereby certify that this document and the data contained herein was prepared by me or under my direct supervision.

Lyle C. Mosey 2/22/1989
SIGNATURE DATE
Registration No. 11943

- Land Surveyor, Professional Engineer
- County Surveyor, County Engineer

OFFICE OF THE COUNTY RECORDER
County of Yellow Medicine

I hereby certify that this document was filed in the Co. Recorders office at 10:35 A.M. on the 8 day of November A.D., 19 89

County Recorder Norman O. Osdale
By _____, Deputy

DOCUMENT NO. 196212

Statement of Evidence: