

# CERTIFICATE OF LOCATION OF GOVERNMENT CORNER

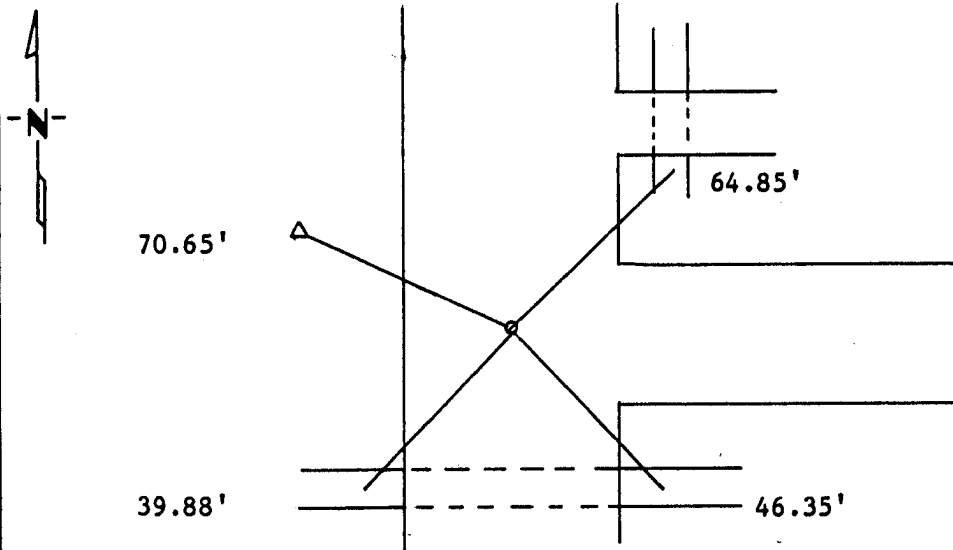
Northeast Corner of Section 16, Township 115N, Range 45W, 5th P.M.

STATE OF MINNESOTA, County of Yellow Medicine

At the corner location shown on the sketch:

- On 4/11/88 ~~XXXXXXXXX~~ Dug, I found several nails with flagging and a wooden stake 2.5 feet down found no stone, the corner appears to be bottom of ditch.
  - left monument as found,  lowered monument,  removed monument (explain)
- On 4/11/88 placed a Set a 5/8" rerod with seal on top of where we found the nails and hub.

### SKETCH OF REFERENCE TIES



PK Nail in CMP NE 64.85'  
 Nail and Seal in Telephone Post NW 70.65'  
 X in concrete culvert SW 39.88'  
 X in concrete culvert SE 46.35'

Statement of evidence relative to this corner location is on back of page.

I hereby certify that this document and the data contained herein was prepared by me or under my direct supervision.

Lytle E. Manning 2/22/1989  
SIGNATURE DATE

Registration No. 11943

- Land Surveyor,  Professional Engineer
- County Surveyor,  County Engineer

OFFICE OF THE COUNTY RECORDER  
County of Yellow Medicine

I hereby certify that this document was filed in the Co. Recorders office at 10:50 A.M. on the 8 day of November A.D., 19 89

County Recorder Norman J. Godeaux

By \_\_\_\_\_, Deputy

DOCUMENT NO. 196215

**Statement of Evidence:**