

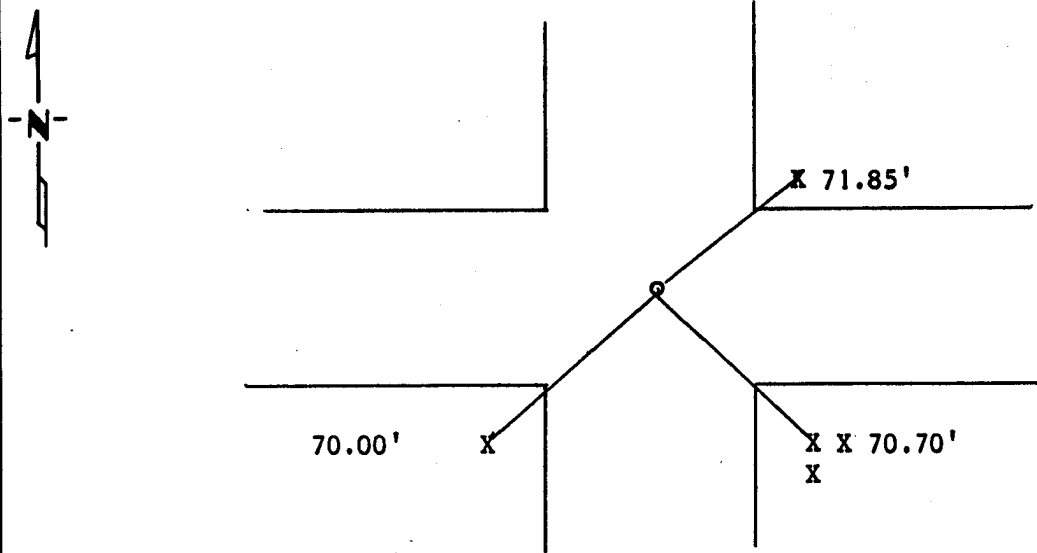
CERTIFICATE OF LOCATION OF GOVERNMENT CORNER

Northeast Corner of Section 21, Township 115N, Range 45W, 5th P.M.
STATE OF MINNESOTA, County of Yellow Medicine

At the corner location shown on the sketch:

- On 4/11/88 found a Found a 1 1/2" iron pipe 3' feet below asphalt, no stone.
DATE
- left monument as found, lowered monument, removed monument (explain)
- On 4/11/88 placed a Set a 5/8" rerod with seal at road surface.
DATE

SKETCH OF REFERENCE TIES



Nail and Seal in Post NE 71.85'
 Nail and Seal in Post SE 70.70'
 Nail and Seal in Post SW 70.00'

Statement of evidence relative to this corner location is on back of page.

I hereby certify that this document and the data contained herein was prepared by me or under my direct supervision.

Lyle C. Mooney 2/22/1989
SIGNATURE DATE

Registration No. 11943

- Land Surveyor, Professional Engineer
- County Surveyor, County Engineer

OFFICE OF THE COUNTY RECORDER

County of Yellow Medicine

I hereby certify that this document was filed in the Co. Recorders office at 10:55 A.M. on the 8 day of November A.D., 19 89

County Recorder Norman G. Gode

By _____, Deputy

DOCUMENT NO. 196216

Statement of Evidence: