

# CERTIFICATE OF LOCATION OF GOVERNMENT CORNER

Northeast Corner of Section 22, Township 115N, Range 45W, 5th P.M.

STATE OF MINNESOTA, County of Yellow Medicine

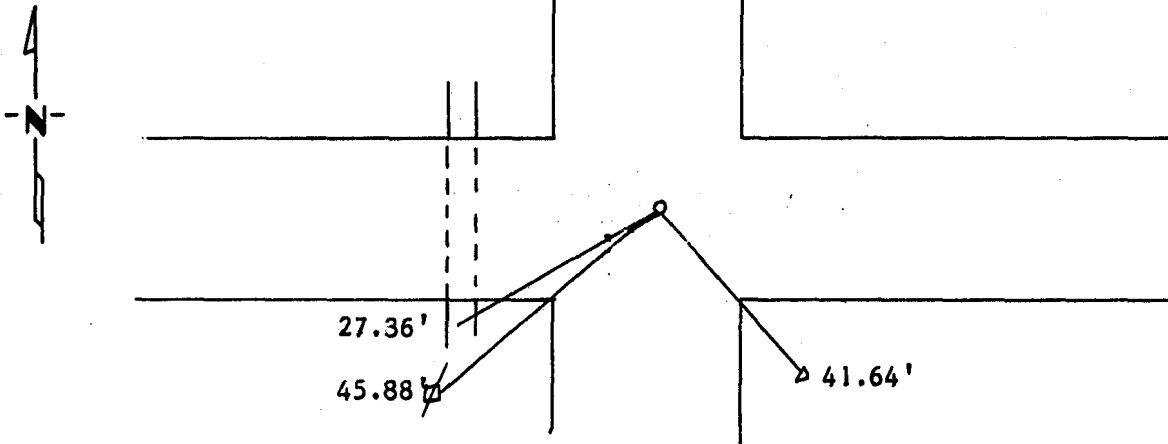
At the corner location shown on the sketch:

On 4/08/88 found a Found a 3/4" iron rod with flagging on it. Dug with  
DATE  
backhoe found feild stone, 4/11/88

left monument as found,  lowered monument,  removed monument (explain)

On 4/11/88 placed a 5/8" rered at road surface.  
DATE

### SKETCH OF REFERENCE TIES



Nail and Seal in Power Pole	45.88'
Nail and Seal in Telephone Post	41.64'
PK Nail in CMP	27.36'

Statement of evidence relative to this corner location is on back of page.

I hereby certify that this document and the data contained herein was prepared by me or under my direct supervision.

Lyle E. Mooney 2/22/1989  
SIGNATURE DATE

Registration No. 21943

Land Surveyor,  Professional Engineer

County Surveyor,  County Engineer

OFFICE OF THE COUNTY RECORDER  
County of Yellow Medicine

I hereby certify that this document was filed in the Co. Recorders office at 11:05 A.M. on the 8 day of November A.D., 19 89

County Recorder Norman J. Quade

By \_\_\_\_\_, Deputy

DOCUMENT NO. 196218

**Statement of Evidence:**