

23-74

Index No. _____

CERTIFICATE OF LOCATION OF GOVERNMENT CORNER

North Quarter Corner of Section 26, Township 115N, Range 45W, 5th P.M.

STATE OF MINNESOTA, County of Yellow Medicine

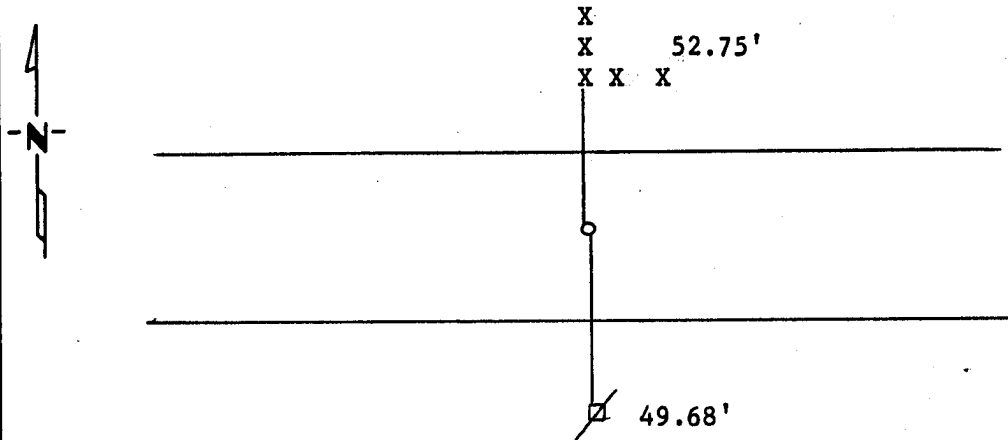
At the corner location shown on the sketch:

On _____ found a _____
DATE

left monument as found, lowered monument, removed monument (explain)

On 3/31/88 placed a 1 set 5/8" rod with seal midway and on line
DATE between section corners. I did not dig.

SKETCH OF REFERENCE TIES



Nail and Seal in Power Pole N 52.75'
Nail and Seal in Corner Fence Post S 49.68'

Statement of evidence relative to this corner location is on back of page.

I hereby certify that this document and the data contained herein was prepared by me or under my direct supervision.

Lyle E. Moring 2/22/1989
SIGNATURE DATE

Registration No. 11943
 Land Surveyor, Professional Engineer
 County Surveyor, County Engineer

OFFICE OF THE COUNTY RECORDER
County of Yellow Medicine

I hereby certify that this document was filed in the Co. Recorders office at 11:10 A.M. on the 8 day of November A.D., 19 89

County Recorder Norman J. Opdahl
By _____, Deputy

DOCUMENT NO. 196219

Statement of Evidence: