

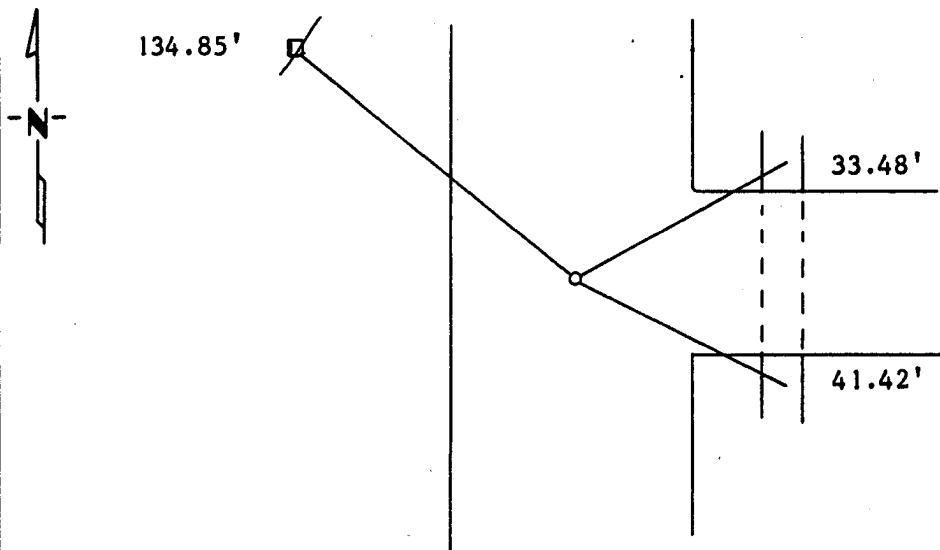
CERTIFICATE OF LOCATION OF GOVERNMENT CORNER

East Quarter Corner of Section 27, Township 115N, Range 45W, 5th P.M.
STATE OF MINNESOTA, County of Yellow Medicine

At the corner location shown on the sketch:

- On _____ found a _____
DATE
- left monument as found, lowered monument, removed monument (explain)
- On 3/31/88 placed a I set a 5/8" rerod with seal midway and on line
DATE between section corners. I did not dig.

SKETCH OF REFERENCE TIES



Nail and Seal in Power Pole NW	134.85'
PK Nail in 30" CMP NE	33.48'
PK Nail in 30" CMP SE	41.42'

Statement of evidence relative to this corner location is on back of page.

I hereby certify that this document and the data contained herein was prepared by me or under my direct supervision.

Leyle E. Moser 2/22/1989
SIGNATURE DATE

Registration No. 11943

Land Surveyor, Professional Engineer

County Surveyor, County Engineer

OFFICE OF THE COUNTY RECORDER
County of Yellow Medicine

I hereby certify that this document was filed in the Co. Recorders office at 11:20 A.M. on the 8 day of November A.D., 1989

County Recorder Norman J. Gaddis

By _____, Deputy

DOCUMENT NO. 196221

Statement of Evidence: