

# CERTIFICATE OF LOCATION OF GOVERNMENT CORNER

Northeast Corner of Section 27, Township 115N, Range 45W, 5th P.M.

STATE OF MINNESOTA, County of Yellow Medicine

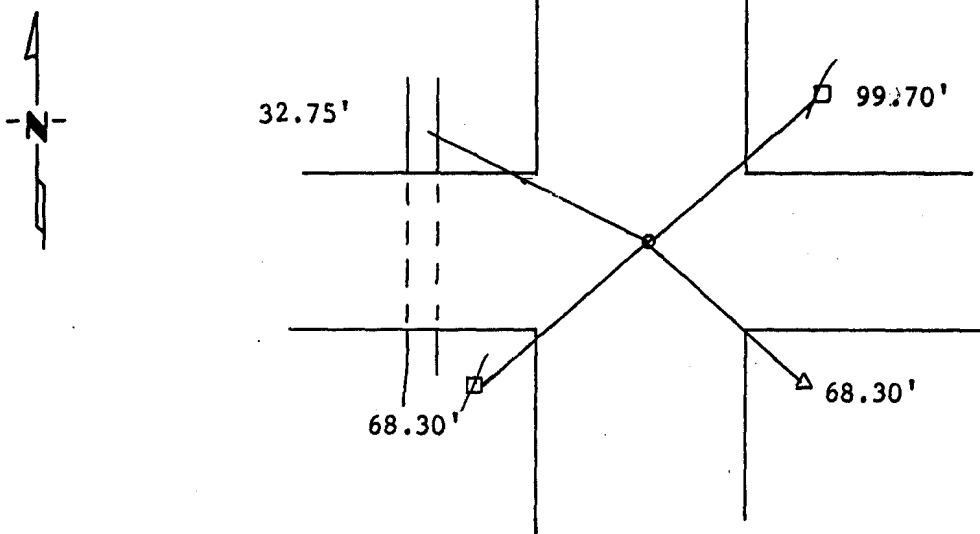
At the corner location shown on the sketch:

On 4/04/88 found a Granite stone with feild stone on top of it.  
DATE

left monument as found,  lowered monument,  removed monument (explain)

On 4/04/88 placed a 1 1/4" pipe with seal on top of it.  
DATE

SKETCH OF REFERENCE TIES



PK Nail in CMP NW 32.75'  
 Nail and Seal in Power Pole NE 99.70'  
 Nail and Seal in Power Pole SW 68.30'  
 Nail and Seal in Telephone Pedastal SE 68.30'

Statement of evidence relative to this corner location is on back of page.

I hereby certify that this document and the data contained herein was prepared by me or under my direct supervision.

Lytle E. Mooney 2/22/1989  
SIGNATURE DATE

Registration No. 11943

Land Surveyor,  Professional Engineer

County Surveyor,  County Engineer

OFFICE OF THE COUNTY RECORDER  
County of Yellow Medicine

I hereby certify that this document was filed in the Co. Recorders office at 11:25 A.M. on the 8 day of November A.D., 19 89

County Recorder Normand Spedahl

By \_\_\_\_\_, Deputy

DOCUMENT NO. 196222

**Statement of Evidence:**