

CERTIFICATE OF LOCATION OF GOVERNMENT CORNER

Northeast Corner of Section 34, Township 115N, Range 45W, 5th P.M.

STATE OF MINNESOTA, County of Yellow Medicine

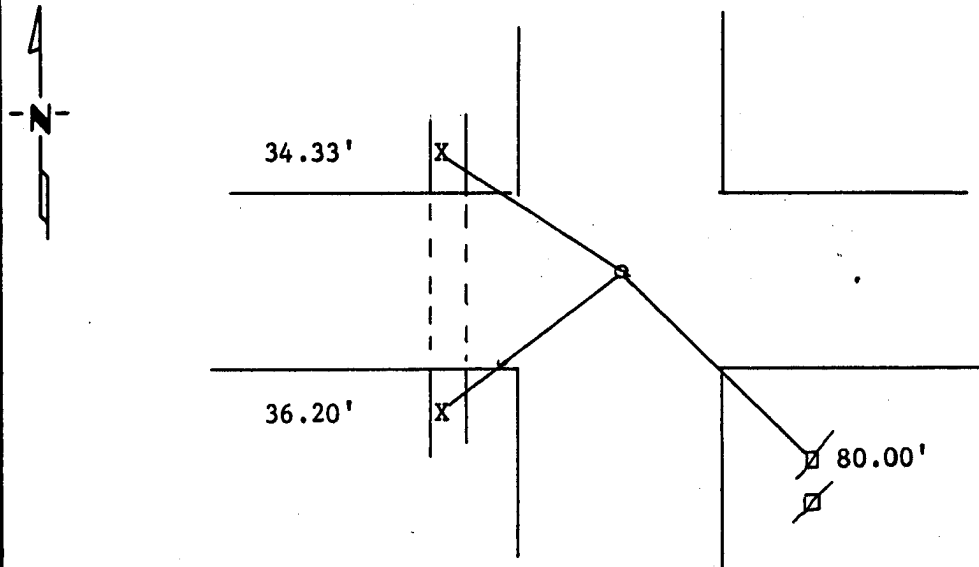
At the corner location shown on the sketch:

On 3/28/88 found a 6"X 6" Granite stone.
DATE

left monument as found, lowered monument, removed monument (explain)

On 4/16/88 placed a 1 1/4" pipe with seal on top of it.
DATE

SKETCH OF REFERENCE TIES



X in Concrete Culvert NW 34.33'
 X in Concrete Culvert SW 36.20'
 Nail and Seal in Power Pole SE 80.00'

Statement of evidence relative to this corner location is on back of page.

I hereby certify that this document and the data contained herein was prepared by me or under my direct supervision.

Lytle E. Mooney 2/22/1989
SIGNATURE DATE

Registration No. 11943
 Land Surveyor, Professional Engineer
 County Surveyor, County Engineer

OFFICE OF THE COUNTY RECORDER
County of Yellow Medicine

I hereby certify that this document was filed in the Co. Recorders office at 11:30 A.M. on the 8 day of November A.D., 19 88

County Recorder Norman Goddard
By _____, Deputy

DOCUMENT NO. 196223

Statement of Evidence: