

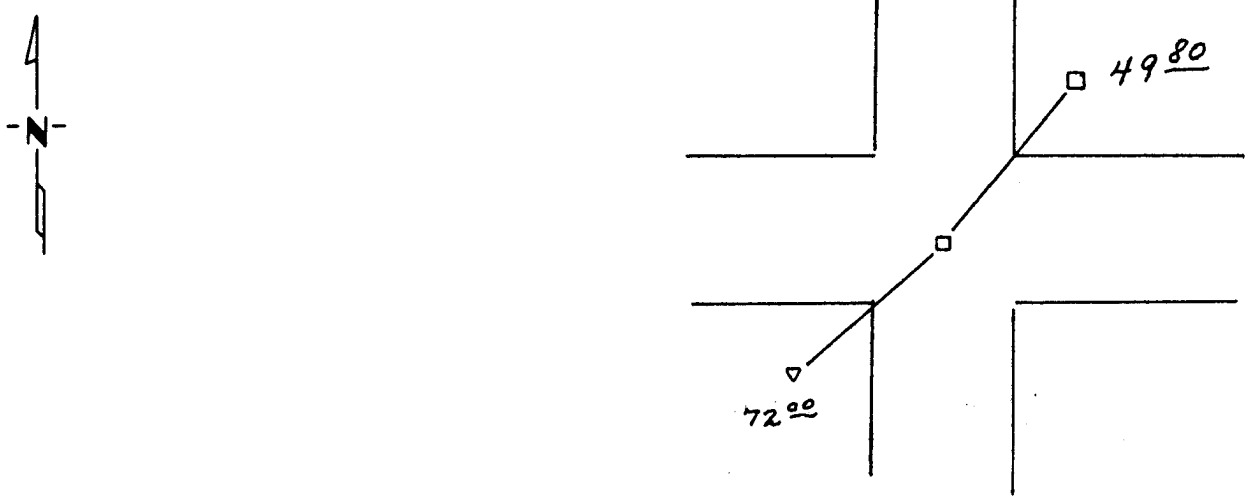
CERTIFICATE OF LOCATION OF GOVERNMENT CORNER

Northeast _____ Corner of Section 36, Township 113 N., Range 39 W., 5th P.M.
 STATE OF MINNESOTA, County of Yellow Medicine

At the corner location shown on the sketch:

- On April 3, 1984 found a 6"x 6" Square cut Granite Stone 20 inches below
DATE
the road surface.
 - left monument as found, lowered monument, removed monument (explain)
- On April 3, 1984 placed a 5/8 inch rerod with seal on top of it
DATE

SKETCH OF REFERENCE TIES



Nail and seal in telephone cable marker Southwest 72.00 feet
 Nail and bottle cap in power pole Northeast 49.80 feet

Statement of evidence relative to this corner location is on back of page.

I hereby certify that this document and the data contained herein was prepared by me or under my direct supervision.

Gayle E. Mooney July 6, 1989
SIGNATURE DATE

Registration No. 11943

Land Surveyor, Professional Engineer
 County Surveyor, County Engineer

OFFICE OF THE COUNTY RECORDER
 County of Yellow Medicine

I hereby certify that this document was filed in the Co. Recorders office at 2:35 P.M. on the 1 day of May A.D., 1990

County Recorder Norman J. Opdahl
 By _____, Deputy
 DOCUMENT NO. 197338

Statement of Evidence:

Original set pit and mound

John Norgaard set a square cut Granite monument for the section corner, in the early 1900's.

The county found and used a square cut Granite Stone

On April 3, 1989 I found said square cut Granite Stone and set a 5/8 inch rerod on top of it.