

CERTIFICATE OF LOCATION OF GOVERNMENT CORNER

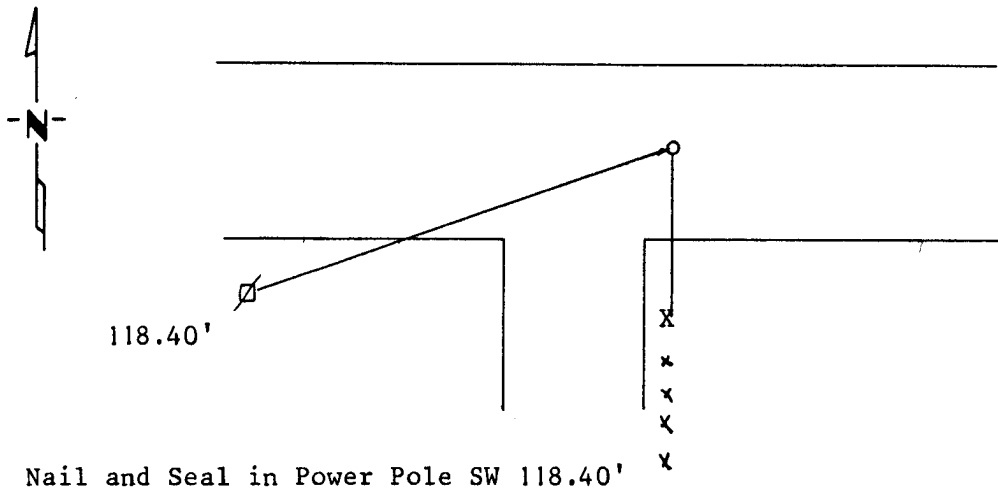
North Quarter Corner of Section 5, Township 114N, Range 42W, 5th P.M.

STATE OF MINNESOTA, County of Yellow Medicine

At the corner location shown on the sketch:

- On _____ found a _____
DATE
- left monument as found, lowered monument, removed monument (explain)
- On 10/02/85 placed a 5/8" rerod midway and on line, it is in center
DATE
of road and in line with fence post to the South.

SKETCH OF REFERENCE TIES



Statement of evidence relative to this corner location is on back of page.

I hereby certify that this document and the data contained herein was prepared by me or under my direct supervision.

Lytle C. Moring 7-7-1989
SIGNATURE DATE

Registration No. 11943

- Land Surveyor, Professional Engineer
- County Surveyor, County Engineer

OFFICE OF THE COUNTY RECORDER

County of Yellow Medicine

I hereby certify that this document was filed in the Co. Recorders office at 2:40 P.M. on the 1 day of May A.D., 1990

County Recorder Norman J. Godwin

By _____, Deputy

DOCUMENT NO. 197339

Statement of Evidence:

Original corner set midway and on line, pit and mound.

The County Highway Department had not found it, but has always excepted it to be midway and on line.

I could not find any records on it I did not dig.

I set the corner midway and on line between section corners it is in the center line of road and in line with a fence to the south.