

CERTIFICATE OF LOCATION OF GOVERNMENT CORNER

East Quarter _____ Corner of Section 20, Township 115 N, Range 43W, 5th P.M.
Yellow Medicine

STATE OF MINNESOTA, County of _____

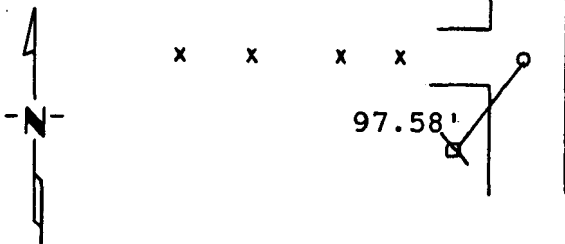
At the corner location shown on the sketch:

On _____ found a _____
DATE

left monument as found, lowered monument, removed monument (explain)

On 02-26-1990 placed a 5/8" rerod with seal
DATE

SKETCH OF REFERENCE TIES



Nail and Seal in Power Pole SW 97.58'

Statement of evidence relative to this corner location is on back of page.

I hereby certify that this document and the data contained herein was prepared by me or under my direct supervision.

Lytle C. Mooney 3-1-1990
SIGNATURE DATE

Registration No. 11945
 Land Surveyor, Professional Engineer
 County Surveyor, County Engineer

OFFICE OF THE COUNTY RECORDER
County of Yellow Medicine

I hereby certify that this document was filed in the Co. Recorders office at 2:50 P.M. on the 1 day of May A.D., 1990

County Recorder Norman D. Opdahl

By _____, Deputy

DOCUMENT NO. 197341

Statement of Evidence:

Original GLO midway and on line 2640' + 2640' for mile.

In 1916 John Nordgaard measured 2637' + 2637' for the mile.

In 1983 the D.N.R. measured 2637' from Northeast to East Quarter and 2648.56' from Southeast to East Quarter.

On February 26, 1990 I set a 5/8" rerod with seal on line between section corners and in line with fence to the West having a distance of 2637.15' from the Northeast corner to the East Quarter and 2648.75' from the Southeast corner to the East Quarter corner.